

2013 Public Education



Spending, taxpayer aid, student achievement and other data for every public school district in Kansas.



FACT BOOK

WWW.KANSASPOLICY.ORG | WWW.KANSASOPENGOV.ORG



KANSAS · POLICY
INSTITUTE

Kansas Policy Institute is an independent non-profit organization that advocates for free markets and the protection of personal freedom. Our work is focused on state and local issues with particular emphasis on economic freedom and educational freedom.

Guarantee of Quality Scholarship

Kansas Policy Institute is committed to delivering the highest quality and most reliable research on state and local issues in Kansas. KPI guarantees that all original factual data are true and correct and that information attributed to other sources is accurately represented.

INTRODUCTION

The data in this Fact Book all come from official government sources, including local school districts, the Kansas Department of Education (KSDE) and the U.S. Department of Education. All data is the most current available and, unless otherwise noted, is through 2011-2012 academic year. Additional information (including annual historical data) for individual school districts is available on our transparency site, KansasOpenGov.org and on the KSDE site at ksde.org.

We compiled this Fact Book because scientific surveys show that citizens are grossly misinformed on many pertinent facts of public education in Kansas. Aid and spending per-pupil are much higher than many Kansans believe and student achievement is lower than understood. Many Kansas students are doing quite well but thousands of students each year are falling behind, and a false sense of high achievement is a tremendous barrier to getting them the help they need.

State assessment results show that only 56% of Kansas 11th grade students can read grade-appropriate material

with full comprehension. It's intuitive to believe that more money is needed to close achievement gaps but as shown in Table 6, student achievement on independent tests remains unchanged despite billions more in taxpayer support.

Table 9 illustrates that many states get the same or better results while spending less than others. Wisconsin, for example, spends considerably more than Kansas but student scores are consistently lower. Texas, on the other hand, spends considerably less per-pupil than Kansas but gets slightly better results with nearly every student cohort. At the very least, this indicates that it's not how much is spent that matters; it's how the money is spent.

Kansas taxpayers are investing a lot of money into public education. Indeed, Table 1 shows that taxpayer support of public education in Kansas set a new record in 2012, at \$5.771 billion. KSDE estimates that 2013 will set another record at \$5.816 billion or \$12,738 per-pupil.

Accurate information is necessary for good decision-making. We hope you find this Fact Book useful as you reach your own informed decisions regarding public education in Kansas.

Table 1: State, Federal and Local Taxpayer Support (*millions of dollars*)

School Year	State	Federal	Local	Total
1997-98	1,815.7	189.1	1,058.4	3,063.2
1998-99	2,035.2	202.6	1,004.7	3,242.5
1999-00	2,110.5	220.8	1,071.4	3,402.7
2000-01	2,152.6	261.0	1,172.9	3,586.6
2001-02	2,200.5	310.1	1,269.9	3,780.6
2002-03	2,277.8	340.7	1,335.2	3,953.7
2003-04	2,124.6	376.9	1,592.6	4,094.1
2004-05	2,362.2	398.7	1,528.5	4,289.4
2005-06	2,658.0	382.8	1,648.5	4,689.3
2006-07	2,889.0	385.4	1,867.7	5,142.1
2007-08	3,131.5	377.0	1,937.9	5,446.4
2008-09	3,287.2	413.6	1,965.9	5,666.7
2009-10	2,867.8	726.6	1,995.1	5,589.5
2010-11	2,961.8	666.6	1,958.7	5,587.0
2011-12	3,184.2	447.4	2,139.4	5,771.0

Source: Kansas Department of Education

Table 2: State, Federal and Local Taxpayer Support (*per pupil, full time equivalent enrollment*)

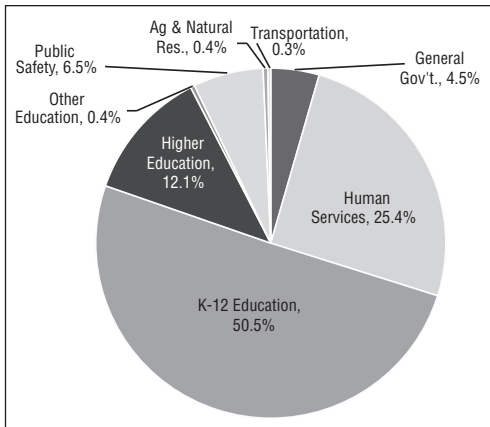
School Year	State	Federal	Local	Total
1997-98	4,047	422	2,359	6,828
1998-99	4,533	451	2,238	7,222
1999-00	4,704	492	2,388	7,584
2000-01	4,816	584	2,624	8,024
2001-02	4,941	696	2,851	8,488
2002-03	5,124	766	3,004	8,894
2003-04	4,793	850	3,593	9,236
2004-05	5,346	902	3,459	9,707
2005-06	6,006	865	3,725	10,596
2006-07	6,494	866	4,198	11,558
2007-08	7,008	844	4,336	12,188
2008-09	7,344	924	4,392	12,660
2009-10	6,326	1,603	4,401	12,330
2010-11	6,511	1,465	4,306	12,283
2011-12	6,983	981	4,692	12,656

Source: Kansas Department of Education

Table 3: State Aid Components

School Year	Base	KPERS	Bond & Interest	All Other (Weightings)	Total
1997-98	3,670	157	42	178	4,047
1998-99	3,720	173	50	590	4,533
1999-00	3,770	182	58	694	4,704
2000-01	3,820	184	69	744	4,816
2001-02	3,870	205	90	776	4,941
2002-03	3,863	234	106	921	5,124
2003-04	3,863	250	113	567	4,793
2004-05	3,863	274	118	1,091	5,346
2005-06	4,257	320	130	1,299	6,006
2006-07	4,316	379	144	1,655	6,494
2007-08	4,374	434	156	2,045	7,008
2008-09	4,400	477	170	2,297	7,344
2009-10	4,012	477	194	1,643	6,326
2010-11	3,937	409	212	1,953	6,511
2011-12	3,780	797	230	2,176	6,983

Source: Kansas Department of Education

Table 4: General Fund Allocations
(FY 2012 Actual)

Source: Kansas Division of the Budget, FY 2014 Governor's Budget Report Schedule 2.2

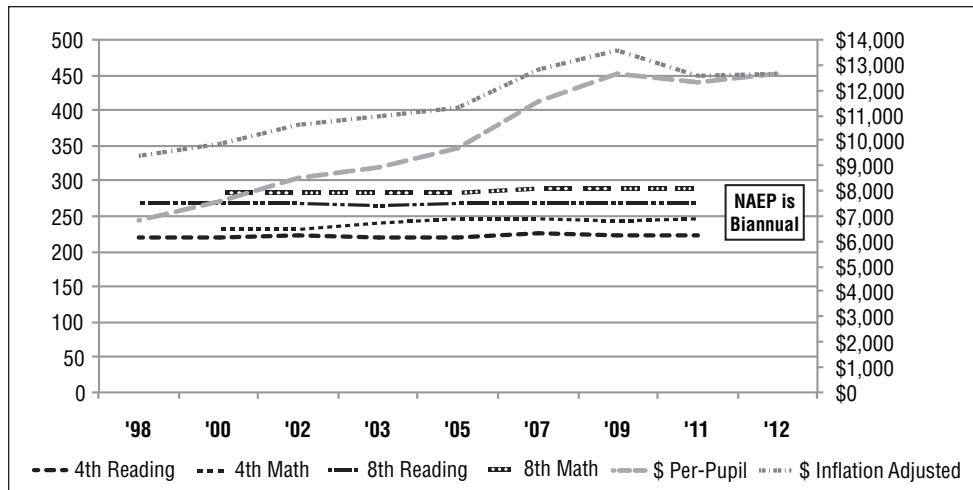
Table 5: General Fund Allocation to K-12 Education

(FY 2012 Budget)

Alabama55.1%	Georgia42.9%	Missouri34.9%	Hawaii26.4%
Indiana53.6%	Arizona42.4%	US Average . . 34.7%	Illinois23.1%
Utah50.8%	Texas41.7%	Pennsylvania . . 34.1%	Massachusetts . 18.3%
Kansas 50.3%	North Carolina . 40.1%	Maine33.9%	Alaska17.6%
Idaho48.7%	Nevada39.7%	Tennessee 33.7%	Connecticut . . . 14.7%
Mississippi . . . 46.4%	Louisiana 39.4%	New York32.8%	Vermont9.7%
Washington . . . 44.9%	Colorado39.1%	Delaware32.2%	Michigan1.2%
Iowa44.8%	Florida38.1%	Nebraska30.4%	Wyoming0.2%
West Virginia . . 44.3%	Maryland36.9%	Oklahoma30.4%	New Hampshire . 0.0%
New Mexico . . . 44.2%	Minnesota 36.8%	South Dakota . . 29.5%	
Kentucky 44.0%	California36.7%	Virginia29.3%	
Arkansas 43.7%	South Carolina . 36.6%	North Dakota . . 27.9%	
Wisconsin 43.7%	New Jersey . . . 35.8%	Rhode Island . . 27.6%	
Oregon43.0%	Montana35.7%	Ohio26.7%	

Source: National Association of State Budget Officers, State Expenditure Report

**Table 6: Kansas Spending and Achievement Trend
NAEP Scale Scores and Spending Per-Pupil**



Source: National Assessment of Education Progress (NAEP), Kansas Dept. of Education, Bureau of Labor Statistics

Table 7: Kansas Performance on the National Assessment of Educational Progress (NAEP) – Reading

	Year	White		Hispanic		African American		Low Income		All Students	
		Scale Score	% Prof.	Scale Score	% Prof.	Scale Score	% Prof.	Scale Score	% Prof.	Scale Score	% Prof.
4th Grade	1998	227	37%	201	22%	197	15%	206	22%	221	34%
	2002	226	38%	205	15%	206	17%	211	21%	222	34%
	2003	225	37%	207	19%	197	14%	206	18%	220	33%
	2005	225	37%	203	14%	196	10%	208	20%	220	32%
	2007	229	41%	209	19%	208	18%	212	21%	225	36%
	2009	229	40%	210	20%	210	20%	213	22%	224	35%
	2011	229	42%	209	19%	204	18%	212	23%	224	36%
8th Grade	1998	272	40%	241	11%	249	20%	254	21%	268	36%
	2002	273	42%	253	23%	244	12%	251	19%	269	38%
	2003	271	40%	245	17%	243	10%	253	22%	266	35%
	2005	271	39%	249	14%	247	15%	254	21%	267	35%
	2007	272	40%	248	17%	246	12%	253	20%	267	35%
	2009	272	39%	250	16%	248	14%	255	19%	267	33%
	2011	272	41%	254	19%	248	15%	256	22%	267	35%

Source: USDE, National Center for Education Statistics; scale score range is 0 to 500

Table 8: Kansas Performance on the National Assessment of Educational Progress (NAEP) – Math

	Year	White		Hispanic		African American		Low Income		All Students	
		Scale Score	% Prof.	Scale Score	% Prof.	Scale Score	% Prof.	Scale Score	% Prof.	Scale Score	% Prof.
4th Grade	2000	237	34%	213	13%	208	4%	218	13%	232	29%
	2003	246	47%	230	19%	217	13%	231	24%	242	41%
	2005	249	52%	234	30%	228	24%	235	30%	246	47%
	2007	252	58%	234	29%	226	21%	237	34%	248	51%
	2009	251	55%	233	24%	224	18%	236	32%	245	46%
	2011	251	56%	235	26%	227	18%	238	33%	246	48%
8th Grade	2000	287	36%	263	12%	245	10%	265	17%	283	34%
	2003	290	39%	263	16%	252	8%	270	19%	284	34%
	2005	289	39%	266	14%	256	12%	270	19%	284	34%
	2007	295	46%	269	16%	267	16%	275	23%	290	40%
	2009	294	45%	274	22%	264	15%	276	24%	289	39%
	2011	295	47%	274	22%	269	16%	276	24%	290	41%

Source: USDE, National Center for Education Statistics; scale score range is 0 to 500

Table 9: State Spending and Achievement

State	2011 Current Spending Per-pupil	NAEP – 4th Grade Reading								NAEP – 8th Grade Reading					
		White		Hispanic		African American		Low Income		White		Hispanic		African American	
		Scale Score	% Prof.	Scale Score	% Prof.	Scale Score	% Prof.	Scale Score	% Prof.	Scale Score	% Prof.	Scale Score	% Prof.	Scale Score	% Prof.
Alabama	\$8,813	230	41%	205	16%	204	14%	177	18%	268	34%	246	16%	243	11%
Alaska	\$16,674	223	36%	212	24%	206	20%	169	13%	274	42%	260	24%	252	17%
Arizona	\$7,666	225	38%	203	16%	204	20%	169	15%	272	41%	251	17%	248	18%
Arkansas	\$9,353	224	38%	204	18%	197	11%	176	20%	267	35%	253	21%	238	9%
California	\$9,139	229	40%	198	12%	208	19%	175	12%	268	35%	245	14%	243	11%
Colorado	\$8,724	236	51%	203	18%	207	18%	178	19%	278	49%	254	22%	257	22%
Connecticut	\$15,600	239	55%	204	17%	204	14%	188	17%	283	54%	255	22%	255	21%
Delaware	\$12,685	234	47%	214	22%	215	23%	192	21%	273	42%	259	26%	254	18%
Florida	\$8,887	235	48%	220	30%	209	17%	201	24%	270	38%	259	27%	248	14%
Georgia	\$9,253	231	43%	214	26%	208	19%	189	20%	272	38%	258	21%	251	14%
Hawaii	\$12,004	226	38%	209	22%	215	26%	158	15%	273	41%	246	17%	261	25%
Idaho	\$6,824	225	37%	201	15%	*	*	177	21%	271	37%	254	17%	*	*
Illinois	\$10,774	231	45%	204	18%	198	13%	183	16%	274	44%	257	23%	249	15%
Indiana	\$9,370	226	38%	203	17%	203	13%	187	20%	269	36%	255	22%	247	14%
Iowa	\$9,807	225	37%	201	15%	193	11%	178	17%	267	35%	251	20%	247	12%
Kansas	\$9,498	229	42%	209	20%	204	18%	186	23%	272	41%	254	18%	248	15%
U.S. Average	\$10,560	230	42%	205	17%	205	16%	186	18%	272	41%	251	18%	248	15%

		NAEP – 4th Grade Math								NAEP – 8th Grade Math							
Low Income		White		Hispanic		African American		Low Income		White		Hispanic		African American		Low Income	
Scale Score	% Prof.	Scale Score	% Prof.	Scale Score	% Prof.	Scale Score	% Prof.	Scale Score	% Prof.	Scale Score	% Prof.	Scale Score	% Prof.	Scale Score	% Prof.	Scale Score	% Prof.
248	15%	240	38%	227	21%	215	8%	222	15%	280	28%	255	9%	250	7%	256	9%
245	16%	248	50%	239	36%	225	15%	224	22%	296	47%	277	25%	273	18%	269	21%
249	17%	246	49%	227	21%	224	23%	227	22%	294	46%	266	18%	269	18%	267	19%
250	18%	244	45%	233	28%	219	16%	230	26%	287	37%	272	20%	257	9%	269	18%
244	13%	252	57%	222	17%	225	19%	222	18%	290	41%	260	13%	254	12%	260	14%
254	20%	254	60%	230	26%	225	21%	231	28%	302	55%	271	20%	270	17%	273	23%
257	23%	253	60%	222	19%	220	15%	223	19%	297	48%	262	13%	262	12%	264	14%
256	21%	250	53%	231	25%	227	19%	231	24%	294	44%	274	21%	266	14%	270	17%
254	20%	250	52%	236	31%	226	18%	232	26%	287	37%	274	22%	258	11%	267	16%
253	16%	249	51%	233	29%	224	18%	227	21%	291	40%	277	25%	262	12%	267	16%
246	16%	248	53%	237	39%	233	32%	228	26%	290	41%	263	20%	277	26%	268	21%
259	23%	244	44%	223	17%	*	*	232	27%	291	41%	267	16%	*	*	276	24%
253	19%	249	52%	226	20%	219	14%	225	20%	294	44%	272	19%	260	10%	269	17%
254	19%	249	51%	234	29%	223	15%	235	31%	290	40%	275	21%	264	11%	273	20%
253	20%	246	47%	229	24%	224	18%	233	28%	288	37%	269	14%	258	11%	271	17%
256	22%	251	56%	235	26%	227	18%	238	33%	295	47%	274	22%	269	16%	276	24%
251	18%	249	52%	229	24%	224	17%	229	24%	293	43%	269	20%	262	12%	269	19%

State	2011 Current Spending Per-pupil	NAEP – 4th Grade Reading								NAEP – 8th Grade Reading					
		White		Hispanic		African American		Low Income		White		Hispanic		African American	
		Scale Score	% Prof.	Scale Score	% Prof.	Scale Score	% Prof.	Scale Score	% Prof.	Scale Score	% Prof.	Scale Score	% Prof.	Scale Score	% Prof.
Kentucky	\$9,309	226	37%	222	35%	210	19%	207	23%	271	39%	264	30%	248	13%
Louisiana	\$10,723	223	33%	208	22%	197	11%	181	14%	264	31%	249	19%	241	10%
Maine	\$11,438	223	33%	*	*	192	15%	191	20%	271	39%	*	*	248	21%
Maryland	\$13,871	242	57%	226	37%	213	22%	215	24%	282	52%	262	30%	255	21%
Massachusetts	\$13,941	243	59%	216	23%	216	24%	213	25%	282	53%	248	18%	255	20%
Michigan	\$10,823	225	37%	206	20%	192	9%	180	17%	269	36%	260	26%	244	10%
Minnesota	\$10,712	229	42%	201	12%	199	16%	189	17%	274	44%	257	23%	246	15%
Mississippi	\$7,928	220	30%	203	25%	198	12%	171	15%	267	33%	*	*	240	9%
Missouri	\$9,410	226	39%	209	23%	199	14%	186	20%	271	40%	258	26%	244	11%
Montana	\$10,639	229	39%	217	23%	*	*	192	23%	275	44%	262	27%	*	*
Nebraska	\$10,825	230	42%	208	20%	199	15%	190	21%	272	39%	252	20%	250	15%
Nevada	\$8,527	224	36%	203	17%	202	15%	176	16%	269	37%	247	15%	250	17%
New Hampshire	\$13,224	231	44%	217	26%	*	*	197	25%	273	41%	253	16%	*	*
New Jersey	\$15,968	239	53%	216	25%	216	25%	203	23%	284	56%	257	22%	256	21%
New Mexico	\$9,070	225	34%	202	15%	208	17%	177	14%	270	36%	251	16%	248	14%
New York	\$19,076	232	46%	209	20%	208	18%	189	23%	276	46%	251	20%	251	18%
North Carolina	\$8,312	232	46%	207	20%	206	16%	184	19%	271	40%	256	22%	247	14%
Kansas	\$9,498	229	42%	209	20%	204	18%	186	23%	272	41%	254	18%	248	15%
U.S. Average	\$10,560	230	42%	205	17%	205	16%	186	18%	272	41%	251	18%	248	15%

		NAEP – 4th Grade Math								NAEP – 8th Grade Math							
Low Income		White		Hispanic		African American		Low Income		White		Hispanic		African American		Low Income	
Scale Score	% Prof.	Scale Score	% Prof.	Scale Score	% Prof.	Scale Score	% Prof.	Scale Score	% Prof.	Scale Score	% Prof.	Scale Score	% Prof.	Scale Score	% Prof.	Scale Score	% Prof.
260	25%	243	41%	236	30%	225	17%	232	26%	284	33%	269	18%	261	13%	271	18%
247	14%	241	40%	230	20%	219	12%	224	17%	283	31%	269	16%	259	10%	265	14%
258	24%	246	47%	*	*	212	10%	235	31%	290	40%	*	*	265	18%	276	25%
253	18%	258	64%	245	43%	230	23%	233	26%	303	56%	273	27%	267	18%	266	17%
257	25%	258	67%	236	32%	235	27%	239	36%	304	58%	273	21%	275	26%	280	29%
253	19%	242	41%	228	21%	211	8%	224	18%	286	35%	274	23%	250	7%	266	16%
255	22%	255	60%	230	29%	225	23%	235	33%	302	55%	270	18%	266	18%	276	26%
246	13%	241	38%	229	22%	217	10%	224	17%	283	30%	273	20%	255	8%	260	12%
255	21%	246	48%	231	24%	216	14%	230	27%	288	36%	267	15%	254	7%	269	18%
263	30%	247	50%	237	31%	*	*	234	31%	297	49%	285	31%	*	*	280	31%
255	21%	247	48%	226	20%	213	8%	227	21%	290	39%	261	11%	255	8%	269	16%
248	17%	247	48%	229	24%	226	23%	229	25%	292	43%	266	15%	259	12%	267	18%
257	23%	252	59%	235	30%	235	27%	241	39%	293	45%	266	15%	*	*	276	27%
255	20%	256	64%	234	28%	231	24%	233	27%	304	59%	274	24%	272	21%	274	24%
249	15%	247	48%	228	23%	226	19%	226	21%	290	40%	269	18%	265	16%	267	15%
255	24%	245	46%	226	20%	224	17%	229	25%	291	40%	263	13%	264	13%	269	18%
252	18%	253	59%	238	33%	229	18%	235	28%	296	48%	275	23%	267	15%	273	22%
256	22%	251	56%	235	26%	227	18%	238	33%	295	47%	274	22%	269	16%	276	24%
251	18%	249	52%	229	24%	224	17%	229	24%	293	43%	269	20%	262	12%	269	19%

State	2011 Current Spending Per-pupil	NAEP – 4th Grade Reading								NAEP – 8th Grade Reading					
		White		Hispanic		African American		Low Income		White		Hispanic		African American	
		Scale Score	% Prof.	Scale Score	% Prof.	Scale Score	% Prof.	Scale Score	% Prof.	Scale Score	% Prof.	Scale Score	% Prof.	Scale Score	% Prof.
North Dakota	\$11,420	228	39%	214	22%	220	29%	196	23%	272	37%	*	*	*	*
Ohio	\$11,223	229	39%	211	19%	204	13%	190	19%	274	43%	252	17%	247	14%
Oklahoma	\$7,587	221	31%	207	18%	199	13%	172	19%	265	32%	251	15%	247	13%
Oregon	\$9,682	222	35%	196	12%	202	18%	177	19%	269	37%	250	16%	248	19%
Pennsylvania	\$13,467	233	47%	202	17%	204	19%	191	24%	275	46%	250	16%	244	12%
Rhode Island	\$13,815	230	43%	204	16%	208	23%	176	19%	272	41%	248	14%	248	18%
South Carolina	\$8,986	226	39%	208	20%	199	12%	168	16%	269	37%	257	22%	246	10%
South Dakota	\$8,805	225	35%	207	21%	204	18%	186	19%	273	39%	256	22%	256	17%
Tennessee	\$8,242	221	31%	201	16%	198	11%	177	15%	265	31%	255	24%	240	11%
Texas	\$8,671	233	45%	210	19%	210	18%	188	17%	274	42%	254	17%	252	15%
Utah	\$6,212	226	38%	196	13%	*	*	184	21%	272	40%	247	13%	*	*
Vermont	\$15,925	228	42%	*	*	205	24%	184	25%	274	45%	*	*	*	*
Virginia	\$10,364	235	49%	209	21%	210	19%	191	17%	273	43%	259	24%	251	16%
Washington	\$9,483	229	42%	199	16%	209	19%	183	18%	272	42%	250	17%	254	23%
West Virginia	\$11,846	216	28%	*	*	196	15%	182	18%	256	24%	*	*	249	19%
Wisconsin	\$11,774	227	39%	202	13%	196	12%	182	18%	272	40%	248	13%	240	10%
Wyoming	\$15,849	227	38%	213	22%	*	*	194	23%	272	40%	258	26%	*	*
Kansas	\$9,498	229	42%	209	20%	204	18%	186	23%	272	41%	254	18%	248	15%
U.S. Average	\$10,560	230	42%	205	17%	205	16%	186	18%	272	41%	251	18%	248	15%

		NAEP – 4th Grade Math								NAEP – 8th Grade Math							
Low Income		White		Hispanic		African American		Low Income		White		Hispanic		African American		Low Income	
Scale Score	% Prof.	Scale Score	% Prof.	Scale Score	% Prof.	Scale Score	% Prof.	Scale Score	% Prof.	Scale Score	% Prof.	Scale Score	% Prof.	Scale Score	% Prof.	Scale Score	% Prof.
257	19%	249	52%	233	24%	*	*	235	29%	296	47%	*	*	*	*	278	27%
255	21%	249	53%	233	27%	226	20%	234	30%	295	46%	273	26%	263	12%	274	22%
254	20%	243	41%	227	19%	224	14%	232	25%	286	34%	264	15%	262	11%	270	16%
253	20%	243	43%	220	15%	215	14%	226	22%	287	37%	268	17%	263	18%	271	20%
252	20%	251	56%	226	20%	224	17%	231	26%	294	47%	269	22%	257	9%	268	20%
251	18%	249	53%	224	21%	225	20%	229	26%	292	42%	261	13%	256	12%	267	16%
250	16%	248	52%	234	28%	220	13%	227	21%	293	43%	273	25%	263	14%	268	18%
257	22%	246	46%	226	18%	227	21%	231	25%	295	47%	274	20%	270	21%	277	25%
250	17%	239	36%	228	19%	216	12%	225	19%	281	28%	266	15%	252	9%	262	13%
253	16%	253	60%	235	29%	232	25%	234	28%	304	58%	283	31%	277	21%	281	28%
254	20%	247	49%	223	17%	*	*	232	28%	289	41%	257	9%	*	*	269	20%
260	28%	248	50%	*	*	*	*	238	35%	295	47%	*	*	*	*	277	26%
250	15%	251	56%	237	31%	229	20%	231	24%	297	48%	279	27%	268	18%	270	18%
255	22%	249	53%	226	22%	227	20%	230	27%	294	46%	269	22%	265	15%	273	25%
246	15%	235	32%	*	*	227	20%	227	21%	274	22%	*	*	260	9%	264	13%
251	17%	251	55%	228	22%	217	12%	231	27%	295	47%	270	21%	256	11%	269	20%
260	26%	246	47%	235	31%	*	*	236	32%	291	41%	271	20%	*	*	277	26%
256	22%	251	56%	235	26%	227	18%	238	33%	295	47%	274	22%	269	16%	276	24%
251	18%	249	52%	229	24%	224	17%	229	24%	293	43%	269	20%	262	12%	269	19%

Table 10: NAEP-Equivalent Scale Score for Proficient – 4th Grade Reading

	NAEP Equiv.	Rank		NAEP Equiv.	Rank		NAEP Equiv.	Rank
NAEP Minimum for Proficient is 238			Kentucky	205	16	South Carolina	194	33
Massachusetts	234	1	Washington	205	16	Arizona	193	36
Missouri	229	2	Minnesota	204	19	Louisiana	192	37
New Jersey	221	3	North Carolina	204	19	Ohio	192	37
Vermont	214	4	Hawaii	203	21	Wisconsin	189	39
New Hampshire	211	5	Indiana	203	21	Texas	188	40
Oklahoma	211	5	North Dakota	203	21	Maryland	187	41
Mississippi	210	7	California	202	24	Idaho	186	42
Rhode Island	209	8	Nevada	202	24	Kansas	186	42
NAEP Minimum for Basic is 208			Arkansas	200	26	Virginia	186	42
Connecticut	208	9	New York	200	26	Alaska	183	45
Wyoming	208	9	Delaware	199	28	Colorado	183	45
Maine	207	11	South Dakota	199	28	Alabama	179	47
New Mexico	207	11	Illinois	198	30	Georgia	178	48
Florida	206	13	Montana	198	30	Oregon	177	49
Pennsylvania	206	13	Utah	196	32	Tennessee	170	50
West Virginia	206	13	Iowa	194	33	Nebraska	Data not available	
Dist. of Columbia	205	16	Michigan	194	33			

Source: U.S. Department of Education, National Center for Education Statistics. A 2009 state mapping study by NCES found that most states have set their cut scores for Proficient below what is considered Basic on NAEP.

Table 11: NAEP-Equivalent Scale Score for Proficient – 8th Grade Reading

	NAEP Equiv.	Rank		NAEP Equiv.	Rank		NAEP Equiv.	Rank
NAEP Minimum for Proficient is 281			Massachusetts	249	18	Arizona	241	33
Missouri	267	1	Oklahoma	249	18	Maryland	237	36
Florida	262	2	West Virginia	249	18	Delaware	236	37
Vermont	259	3	Iowa	248	21	Michigan	236	37
Wyoming	259	3	New York	247	22	Kansas	236	37
Minnesota	259	3	New Mexico	246	23	Utah	235	40
California	259	3	North Carolina	246	23	Illinois	234	41
New Hampshire	256	7	Nevada	246	23	Alabama	234	41
Indiana	255	8	Montana	246	23	Wisconsin	232	43
Mississippi	254	9	Pennsylvania	245	27	Alaska	231	44
South Dakota	254	9	South Carolina	245	27	Virginia	229	45
Maine	253	11	New Jersey	244	29	Colorado	228	46
Kentucky	253	11	Dist. of Columbia	244	29	Idaho	218	47
Washington	253	11	Connecticut	243	31	Tennessee	211	48
North Dakota	253	11	Louisiana	243	31	Georgia	209	49
Rhode Island	252	15	NAEP Minimum for Basic is 243			Texas	201	50
Ohio	251	16	Hawaii	241	33	Nebraska (data not available)		
Oregon	250	17	Arkansas	241	33			

Source: U.S. Department of Education, National Center for Education Statistics. A 2009 state mapping study by NCES found that most states have set their cut scores for Proficient below what is considered Basic on NAEP.

Table 12: District-Level Information

Co.	USD	District Name	FY 2012 Spending Per Pupil							FY 2012 Revenue Per Pupil						
			Total	% Chg. '05-'12	Instr.	% Chg. '05-'12	Instr. % of Total	Admin.	% Chg. '05-'12	State	% Chg. '05-'12	Federal	% Chg. '05-'12	Local	% Chg. '05-'12	
AL	258	Humboldt	11,701	10%	6,933	12%	59%	1,078	-26%	8,351	13%	732	-21%	2,618	14%	
AL	257	Iola	11,763	26%	7,044	28%	60%	1,214	37%	8,256	25%	970	16%	2,537	34%	
AL	256	Marmaton Valley	14,063	34%	8,683	46%	62%	1,132	8%	10,026	35%	815	-20%	3,222	56%	
AN	479	Crest	14,282	17%	8,779	53%	61%	1,479	28%	10,317	28%	779	19%	3,186	-7%	
AN	365	Garnett	12,665	36%	6,803	32%	54%	1,088	19%	7,598	30%	621	-6%	4,446	58%	
AT	409	Atchison	12,147	7%	6,585	9%	54%	1,116	-15%	7,968	40%	1,174	-20%	3,005	-28%	
AT	377	Atchison County	12,897	44%	7,605	47%	59%	1,262	45%	8,600	33%	625	35%	3,672	80%	
BA	254	Barber Co. North	14,186	41%	7,914	49%	56%	1,324	43%	6,292	5%	493	25%	7,401	101%	
BA	255	South Barber	16,076	43%	8,084	27%	50%	1,915	30%	3,007	-54%	687	-6%	12,382	217%	
BT	355	Ellinwood	14,356	41%	7,491	37%	52%	2,005	27%	7,153	1%	593	24%	6,610	150%	
BT	428	Great Bend	12,800	33%	8,193	53%	64%	1,116	34%	7,359	36%	1,523	14%	3,918	35%	
BT	431	Hoisington	12,888	8%	6,972	16%	54%	1,152	6%	7,868	5%	585	-8%	4,435	17%	
BB	234	Fort Scott	10,172	31%	6,403	32%	63%	941	34%	7,128	32%	1,096	62%	1,948	16%	
BB	235	Uniontown	12,234	14%	7,391	20%	60%	1,026	0%	9,709	18%	744	17%	1,781	-8%	
State of Kansas			12,656	30%	6,824	32%	54%	1,152	18%	6,983	31%	981	9%	4,692	36%	

FTE Enrollment		FTE Employment FY 2012				Unencumbered Carryover Cash (millions)				2012 State Assessment - Reading*							
FY 2012	% Chg. '05-'12	Teachers	% Chg. '05-'12	All Other	% Chg. '05-'12	Current Oper.	% Chg. '05-'12	Capital and Debt	% Chg. '05-'12	White Meets Std.	White Full Comp.	Hispanic Meets Std.	Hispanic Full Comp.	African American Meets Std.	African American Full Comp.	Low Income Meets Std.	Low Income Full Comp.
648	24%	38	-11%	45	21%	0.6	141%	1.8	212%	92%	65%	93%	50%	NA	NA	90%	55%
1,305	-9%	93	-11%	107	-12%	1.8	119%	0.7	-39%	85%	61%	85%	63%	100%	50%	82%	53%
314	-16%	30	9%	40	29%	0.5	-21%	0.6	-10%	89%	58%	NA	NA	NA	NA	83%	47%
199	-16%	22	11%	17	-7%	0.2	-1%	0.7	309%	89%	61%	NA	NA	NA	NA	81%	50%
1,046	-3%	86	-1%	47	-8%	1.5	34%	1.4	-22%	94%	75%	78%	67%	NA	NA	91%	68%
1,622	4%	131	9%	132	25%	3.4	122%	3.7	114%	86%	57%	90%	55%	85%	50%	83%	50%
620	-16%	46	-14%	47	3%	1.3	91%	1.0	85%	86%	57%	NA	NA	NA	NA	81%	52%
426	-28%	39	-16%	38	2%	1.5	90%	1.0	-35%	96%	70%	NA	NA	NA	NA	93%	60%
218	-18%	23	4%	34	49%	0.4	130%	1.0	96%	85%	55%	NA	NA	NA	NA	78%	44%
381	-26%	30	-22%	36	-8%	1.1	108%	1.8	23%	88%	62%	NA	NA	NA	NA	85%	50%
3,021	-1%	245	2%	263	13%	12.5	87%	7.5	66%	90%	65%	81%	47%	82%	45%	83%	50%
653	7%	52	1%	70	24%	1.2	307%	1.9	11%	93%	70%	86%	62%	NA	NA	90%	62%
1,831	-7%	142	-2%	127	6%	2.5	109%	1.3	33%	77%	50%	68%	32%	80%	48%	71%	39%
450	5%	40	0%	29	-3%	0.8	311%	0.3	-9%	95%	80%	NA	NA	NA	NA	93%	70%
456,684	3%	34,075	4%	33,785	8%	888.7	94%	830.8	37%	91%	69%	77%	45%	71%	37%	79%	47%

*KSDE does not require students to have full comprehension of grade-appropriate material to Meet Standards. Full Comprehension is considered to be Advanced and Exceeds Standard. 17

Co.	USD	District Name	FY 2012 Spending Per Pupil							FY 2012 Revenue Per Pupil					
			Total	% Chg. '05-'12	Instr.	% Chg. '05-'12	Instr. % of Total	Admin.	% Chg. '05-'12	State	% Chg. '05-'12	Federal	% Chg. '05-'12	Local	% Chg. '05-'12
BR	415	Hiawatha	13,110	24%	7,097	17%	54%	1,449	43%	6,479	-3%	724	6%	5,907	83%
BR	430	South Brown Co.	14,960	42%	8,810	58%	59%	1,592	64%	10,571	36%	1,204	17%	3,185	82%
BU	385	Andover	10,473	28%	5,232	27%	50%	997	16%	5,826	17%	158	13%	4,489	44%
BU	402	Augusta	10,863	39%	5,733	36%	53%	1,069	19%	7,527	37%	425	22%	2,911	46%
BU	205	Bluestem	14,539	41%	7,537	46%	52%	1,467	6%	9,053	23%	581	87%	4,905	85%
BU	375	Circle	11,038	19%	5,662	25%	51%	771	2%	4,720	9%	354	11%	5,964	29%
BU	396	Douglass	12,749	28%	6,711	36%	53%	1,268	46%	8,858	17%	410	47%	3,481	69%
BU	490	El Dorado	22,984	77%	13,598	63%	59%	1,369	69%	6,159	22%	2,594	21%	14,231	145%
BU	492	Flinthills	14,033	22%	7,731	30%	55%	1,277	10%	9,267	25%	379	-12%	4,387	21%
BU	206	Rem.-Whitewater	13,757	43%	7,990	48%	58%	1,231	30%	7,783	16%	395	46%	5,579	108%
BU	394	Rose Hill	11,598	41%	5,482	34%	47%	829	21%	7,140	18%	283	55%	4,175	114%
CS	284	Chase County	13,131	22%	7,723	33%	59%	1,039	13%	6,994	17%	509	-2%	5,628	32%
CQ	285	Cedar Vale	13,629	8%	7,009	1%	51%	2,449	12%	10,420	19%	794	-20%	2,415	-15%
CQ	286	Chautauqua Co.	13,572	43%	8,150	32%	60%	1,259	60%	8,918	24%	748	-6%	3,906	154%
CK	508	Baxter Springs	11,046	22%	6,725	38%	61%	1,029	-39%	8,305	20%	764	26%	1,977	31%
CK	493	Columbus	11,680	15%	6,678	27%	57%	1,358	37%	7,983	30%	651	9%	3,046	-11%
State of Kansas			12,656	30%	6,824	32%	54%	1,152	18%	6,983	31%	981	9%	4,692	36%

FTE Enrollment		FTE Employment FY 2012				Unencumbered Carryover Cash (millions)				2012 State Assessment - Reading*							
FY 2012	% Chg. '05-'12	Teachers	% Chg. '05-'12	All Other	% Chg. '05-'12	Current Oper.	% Chg. '05-'12	Capital and Debt	% Chg. '05-'12	White Meets Std.	White Full Comp.	Hispanic Meets Std.	Hispanic Full Comp.	African American Meets Std.	African American Full Comp.	Low Income Meets Std.	Low Income Full Comp.
843	-5%	65	-9%	60	-3%	1.5	76%	2.0	132%	94%	74%	79%	43%	75%	25%	89%	57%
569	-14%	51	-2%	44	1%	1.5	419%	1.6	38%	89%	58%	90%	47%	NA	NA	83%	48%
5,102	40%	284	25%	206	18%	2.9	167%	7.7	79%	96%	82%	94%	75%	89%	63%	93%	65%
2,136	1%	138	4%	106	36%	2.5	85%	3.5	69%	92%	70%	84%	60%	NA	NA	88%	60%
526	-27%	40	-18%	37	-28%	0.5	8%	1.1	-33%	87%	57%	NA	NA	NA	NA	83%	53%
1,812	21%	112	26%	154	13%	2.2	282%	4.1	168%	93%	74%	89%	66%	NA	NA	90%	62%
718	-13%	55	-3%	55	-2%	0.8	-2%	0.7	-17%	88%	59%	58%	33%	NA	NA	78%	42%
1,894	-11%	242	4%	608	72%	7.4	226%	5.7	105%	87%	59%	70%	42%	87%	73%	83%	49%
272	-13%	19	-28%	20	-28%	0.6	186%	1.2	83%	95%	80%	NA	NA	NA	NA	91%	71%
517	-1%	41	3%	34	-34%	1.4	95%	0.9	37%	95%	72%	86%	59%	NA	NA	90%	57%
1,701	-2%	98	-7%	81	-4%	2.6	113%	3.3	12%	87%	62%	86%	54%	NA	NA	78%	47%
364	-20%	31	-24%	29	-26%	0.7	294%	1.1	152%	95%	73%	NA	NA	NA	NA	91%	60%
150	-8%	14	-22%	12	-23%	0.4	47%	0.3	15%	83%	54%	NA	NA	NA	NA	78%	46%
354	-17%	30	-9%	31	31%	0.4	-41%	1.5	-30%	92%	66%	NA	NA	NA	NA	92%	64%
989	19%	61	-9%	56	-1%	1.5	500%	1.1	179%	85%	61%	92%	39%	NA	NA	80%	50%
1,016	-16%	75	-21%	59	-22%	2.0	207%	1.2	183%	89%	56%	90%	52%	NA	NA	86%	48%
456,684	3%	34,075	4%	33,785	8%	888.7	94%	830.8	37%	91%	69%	77%	45%	71%	37%	79%	47%

*KSDE does not require students to have full comprehension of grade-appropriate material to Meet Standards. Full Comprehension is considered to be Advanced and Exceeds Standard. 19

Co.	USD	District Name	FY 2012 Spending Per Pupil							FY 2012 Revenue Per Pupil					
			Total	% Chg. '05-'12	Instr.	% Chg. '05-'12	Instr. % of Total	Admin.	% Chg. '05-'12	State	% Chg. '05-'12	Federal	% Chg. '05-'12	Local	% Chg. '05-'12
CK	499	Galena	12,247	20%	7,795	33%	64%	1,261	4%	9,230	20%	995	20%	2,022	22%
CK	404	Riverton	11,958	26%	7,274	39%	61%	1,101	35%	8,461	24%	673	32%	2,824	33%
CN	103	Cheylin	17,175	44%	9,920	43%	58%	2,401	53%	9,292	26%	1,189	146%	6,694	64%
CN	297	St Francis	12,806	21%	7,416	20%	58%	1,018	41%	6,673	7%	612	15%	5,521	47%
CA	220	Ashland	14,035	15%	8,901	22%	63%	1,748	36%	6,659	-3%	468	-9%	6,908	44%
CA	219	Minneola	12,937	19%	6,982	17%	54%	1,661	27%	7,180	11%	521	-1%	5,236	34%
CY	379	Clay Center	15,405	44%	9,110	53%	59%	1,360	14%	7,249	20%	1,208	13%	6,948	92%
CD	333	Concordia	16,886	45%	11,162	65%	66%	1,307	32%	8,217	24%	1,464	-5%	7,205	108%
CD	334	Southern Cloud	14,249	32%	9,065	34%	64%	1,996	45%	8,642	24%	669	-11%	4,938	60%
CF	244	Burlington	15,143	25%	8,306	37%	55%	1,232	11%	2,429	-43%	1,038	-21%	11,676	80%
CF	243	Lebo-Waverly	13,008	36%	8,095	47%	62%	1,059	1%	8,717	25%	485	42%	3,806	68%
CF	245	LeRoy-Gridley	15,131	30%	8,754	27%	58%	1,275	12%	9,045	25%	844	-18%	5,242	57%
CM	300	Comanche County	12,268	10%	6,434	11%	52%	1,340	6%	6,053	21%	632	32%	5,583	-1%
CL	470	Arkansas City	11,561	41%	6,552	40%	57%	818	-3%	8,365	44%	989	12%	2,207	48%
CL	462	Central	14,607	40%	7,692	31%	53%	1,395	36%	10,553	38%	777	36%	3,277	46%
CL	471	Dexter	13,903	47%	7,974	46%	57%	2,136	35%	9,922	28%	601	18%	3,380	185%
State of Kansas			12,656	30%	6,824	32%	54%	1,152	18%	6,983	31%	981	9%	4,692	36%

FTE Enrollment		FTE Employment FY 2012				Unencumbered Carryover Cash (millions)				2012 State Assessment - Reading*							
FY 2012	% Chg. '05-'12	Teachers	% Chg. '05-'12	All Other	% Chg. '05-'12	Current Oper.	% Chg. '05-'12	Capital and Debt	% Chg. '05-'12	Meets Std.	Full Comp.	Meets Std.	Full Comp.	African Meets Std.	American Full Comp.	Meets Std.	Full Comp.
792	5%	61	3%	84	45%	1.8	83%	1.4	21%	85%	53%	77%	53%	NA	NA	81%	47%
779	-5%	65	8%	77	51%	1.1	179%	1.3	38%	86%	51%	100%	63%	NA	NA	83%	44%
139	-13%	18	-4%	15	-7%	0.3	80%	0.1	-65%	93%	73%	55%	18%	NA	NA	75%	43%
286	-12%	28	-17%	22	8%	0.7	-1%	0.9	-45%	93%	75%	77%	62%	NA	NA	88%	64%
208	-4%	19	-11%	20	-10%	0.6	115%	0.2	16%	95%	64%	92%	65%	NA	NA	82%	52%
263	-1%	18	-9%	14	-62%	0.7	51%	0.7	73%	93%	73%	67%	27%	NA	NA	94%	71%
1,312	-4%	131	-4%	169	26%	2.6	31%	1.5	-36%	95%	72%	92%	71%	NA	NA	93%	63%
1,049	-1%	114	1%	124	-4%	0.9	-38%	1.0	-28%	94%	70%	96%	48%	88%	63%	92%	63%
247	5%	31	0%	23	6%	0.8	86%	0.7	36%	92%	51%	NA	NA	NA	NA	91%	51%
828	-2%	69	-5%	87	4%	2.9	54%	2.4	-7%	92%	68%	100%	75%	NA	NA	84%	55%
496	-13%	54	-3%	48	16%	0.6	79%	1.9	101%	93%	64%	NA	NA	NA	NA	87%	50%
208	-19%	24	-19%	29	47%	0.8	88%	0.3	139%	83%	55%	NA	NA	NA	NA	81%	43%
332	7%	25	-11%	28	-29%	1.0	91%	0.6	106%	98%	66%	100%	71%	NA	NA	98%	64%
2,651	-6%	173	-4%	191	24%	1.5	69%	2.1	53%	94%	66%	88%	49%	81%	43%	89%	55%
332	-4%	26	-6%	26	12%	0.3	248%	0.3	40%	95%	69%	100%	55%	NA	NA	92%	67%
153	-33%	15	-17%	21	25%	0.3	1%	0.1	-79%	98%	78%	NA	NA	NA	NA	90%	62%
456,684	3%	34,075	4%	33,785	8%	888.7	94%	830.8	37%	91%	69%	77%	45%	71%	37%	79%	47%

*KSDE does not require students to have full comprehension of grade-appropriate material to Meet Standards. Full Comprehension is considered to be Advanced and Exceeds Standard. 21

Co.	USD	District Name	FY 2012 Spending Per Pupil							FY 2012 Revenue Per Pupil					
			Total	% Chg. '05-'12	Instr.	% Chg. '05-'12	Instr. % of Total	Admin.	% Chg. '05-'12	State	% Chg. '05-'12	Federal	% Chg. '05-'12	Local	% Chg. '05-'12
CL	463	Udall	11,792	16%	6,613	18%	56%	1,891	49%	8,414	14%	434	34%	2,944	23%
CL	465	Winfield	15,319	40%	8,941	37%	58%	1,197	33%	7,896	42%	1,785	-27%	5,638	91%
CR	247	Cherokee	12,735	42%	8,186	57%	64%	1,228	8%	9,408	35%	1,415	158%	1,912	29%
CR	249	Frontenac	10,197	22%	6,567	41%	64%	889	9%	7,958	17%	424	53%	1,815	39%
CR	248	Girard	11,542	29%	7,099	30%	62%	968	32%	8,119	23%	715	64%	2,708	40%
CR	246	Northeast	13,597	38%	7,828	55%	58%	1,346	38%	10,821	42%	1,015	44%	1,761	17%
CR	250	Pittsburg	11,630	28%	6,809	39%	59%	891	24%	7,097	39%	991	3%	3,542	18%
DC	294	Oberlin	14,532	37%	8,224	31%	57%	1,475	38%	7,026	11%	636	-1%	6,870	91%
DK	435	Abilene	10,947	31%	6,576	27%	60%	900	17%	6,518	19%	629	-20%	3,800	80%
DK	473	Chapman	13,795	49%	5,790	10%	42%	1,027	11%	7,486	21%	547	31%	5,762	117%
DK	487	Herington	14,615	57%	7,167	34%	49%	1,294	36%	10,170	41%	666	38%	3,779	141%
DK	481	Rural Vista	13,178	34%	7,346	45%	56%	1,194	27%	8,358	20%	582	26%	4,238	78%
DK	393	Solomon	12,163	26%	7,587	39%	62%	1,416	19%	8,244	19%	671	-16%	3,248	73%
DP	111	Doniphan West	16,653	New	10,318	New	62%	1,564	New	11,050	New	481	New	5,122	New
DP	114	Riverside	13,000	New	7,643	New	59%	1,414	New	9,443	New	676	New	2,881	New
DP	429	Troy	11,890	28%	8,609	63%	72%	728	-48%	7,890	3%	445	19%	3,555	185%
State of Kansas			12,656	30%	6,824	32%	54%	1,152	18%	6,983	31%	981	9%	4,692	36%

FTE Enrollment		FTE Employment FY 2012				Unencumbered Carryover Cash (millions)				2012 State Assessment - Reading*							
FY 2012	% Chg. '05-'12	Teachers	% Chg. '05-'12	All Other	% Chg. '05-'12	Current Oper.	% Chg. '05-'12	Capital and Debt	% Chg. '05-'12	Meets Std.	Full Comp.	Meets Std.	Full Comp.	African Meets Std.	American Full Comp.	Meets Std.	Full Comp.
367	1%	27	-7%	28	-5%	0.7	62%	0.8	20%	90%	61%	NA	NA	NA	NA	83%	57%
2,316	-6%	211	-14%	317	8%	2.7	106%	1.8	19%	91%	67%	81%	53%	67%	46%	85%	57%
665	-16%	56	-7%	59	7%	0.6	44%	0.2	-73%	89%	62%	NA	NA	NA	NA	83%	50%
875	18%	62	22%	34	20%	0.9	104%	0.9	43%	93%	70%	85%	69%	NA	NA	89%	59%
1,020	-2%	65	-1%	58	22%	2.0	47%	1.2	-28%	94%	73%	100%	61%	100%	62%	93%	66%
497	-14%	49	17%	37	16%	1.1	179%	1.3	94%	89%	56%	92%	50%	NA	NA	85%	50%
2,687	9%	186	22%	193	13%	3.3	207%	2.0	26%	86%	57%	76%	42%	77%	34%	81%	46%
335	-23%	33	-15%	26	1%	0.9	47%	0.7	12%	80%	52%	80%	50%	NA	NA	75%	48%
1,519	8%	97	6%	95	27%	6.6	183%	2.6	137%	91%	62%	77%	62%	93%	71%	86%	53%
1,044	9%	81	10%	109	60%	2.3	194%	4.3	282%	94%	73%	83%	44%	87%	47%	93%	61%
475	-6%	40	-10%	40	-12%	1.0	74%	0.6	66%	90%	56%	91%	55%	NA	NA	85%	48%
363	-15%	38	-9%	23	-35%	0.9	83%	0.8	21%	95%	71%	NA	NA	NA	NA	89%	56%
341	-16%	28	-9%	29	1%	0.6	183%	0.7	5%	91%	55%	75%	42%	NA	NA	83%	46%
348	New	45	New	45	New	0.6	New	0.3	New	94%	63%	NA	NA	NA	NA	90%	56%
655	New	64	New	55	New	0.6	New	0.5	New	85%	51%	69%	38%	72%	36%	80%	39%
350	-6%	30	-6%	15	-62%	0.7	83%	0.6	74%	92%	66%	NA	NA	NA	NA	88%	63%
456,684	3%	34,075	4%	33,785	8%	888.7	94%	830.8	37%	91%	69%	77%	45%	71%	37%	79%	47%

*KSDE does not require students to have full comprehension of grade-appropriate material to Meet Standards. Full Comprehension is considered to be Advanced and Exceeds Standard. 23

Co.	USD	District Name	FY 2012 Spending Per Pupil							FY 2012 Revenue Per Pupil					
			Total	% Chg. '05-'12	Instr.	% Chg. '05-'12	Instr. % of Total	Admin.	% Chg. '05-'12	State	% Chg. '05-'12	Federal	% Chg. '05-'12	Local	% Chg. '05-'12
DG	348	Baldwin City	11,591	29%	5,850	36%	50%	1,087	-20%	7,120	21%	387	76%	4,084	42%
DG	491	Eudora	12,514	24%	6,019	18%	48%	726	-16%	7,627	17%	860	247%	4,027	22%
DG	497	Lawrence	11,524	12%	5,829	20%	51%	991	1%	4,941	33%	716	-39%	5,867	9%
ED	347	Kinsley-Offerle	13,815	29%	8,610	35%	62%	1,478	12%	8,532	31%	784	-4%	4,499	34%
ED	502	Lewis	14,448	22%	9,097	18%	63%	1,705	37%	8,323	11%	652	-17%	5,473	53%
EK	283	Elk Valley	15,552	35%	9,544	54%	61%	1,901	53%	11,001	25%	1,022	24%	3,529	88%
EK	282	West Elk	22,059	72%	16,313	97%	74%	2,334	63%	11,444	44%	1,917	7%	8,698	184%
EL	388	Ellis	12,018	26%	7,018	28%	58%	1,469	2%	6,618	4%	486	21%	4,914	78%
EL	489	Hays	14,002	35%	9,168	53%	65%	1,230	16%	5,383	17%	1,564	14%	7,055	60%
EL	432	Victoria	14,712	32%	7,267	12%	49%	1,832	36%	5,336	-21%	391	3%	8,985	123%
EW	112	Central Plains	16,707	New	8,408	New	50%	1,902	New	7,929	New	499	New	8,279	New
EW	327	Ellsworth	12,023	21%	6,485	21%	54%	1,554	34%	8,221	18%	633	98%	3,169	18%
FI	457	Garden City	11,995	26%	6,610	39%	55%	1,302	40%	7,737	46%	1,334	18%	2,924	-5%
FI	363	Holcomb	11,610	-2%	6,166	18%	53%	1,309	16%	3,712	3%	529	40%	7,369	-6%
FO	459	Bucklin	12,913	22%	7,906	26%	61%	1,911	38%	6,645	-5%	664	16%	5,604	85%
FO	443	Dodge City	13,320	34%	6,404	15%	48%	1,262	45%	9,093	48%	1,362	-8%	2,865	24%
State of Kansas			12,656	30%	6,824	32%	54%	1,152	18%	6,983	31%	981	9%	4,692	36%

FTE Enrollment		FTE Employment FY 2012				Unencumbered Carryover Cash (millions)				2012 State Assessment - Reading*							
FY 2012	% Chg. '05-'12	Teachers	% Chg. '05-'12	All Other	% Chg. '05-'12	Current Oper.	% Chg. '05-'12	Capital and Debt	% Chg. '05-'12	Meets Std.	Full Comp.	Meets Std.	Full Comp.	African Meets Std.	American Full Comp.	Meets Std.	Full Comp.
1,346	3%	86	-4%	74	-14%	1.7	1688%	2.5	284%	94%	70%	78%	45%	NA	NA	88%	52%
1,486	20%	103	24%	73	5%	1.5	74%	2.1	32%	89%	68%	96%	67%	NA	NA	85%	54%
11,060	14%	793	7%	776	-4%	35.9	572%	17.0	22%	93%	73%	85%	55%	78%	40%	83%	50%
358	12%	29	0%	38	41%	0.7	118%	0.2	24%	96%	70%	83%	50%	NA	NA	83%	47%
102	-27%	10	-47%	9	-29%	0.8	61%	0.6	4%	100%	95%	100%	69%	NA	NA	100%	86%
167	-17%	17	8%	14	-27%	0.3	52%	0.5	40%	77%	36%	NA	NA	NA	NA	76%	31%
307	-28%	37	-27%	102	16%	1.3	87%	0.9	285%	94%	68%	100%	82%	NA	NA	93%	61%
373	0%	30	-4%	24	-4%	0.7	14%	0.9	90%	94%	73%	81%	56%	NA	NA	88%	64%
2,930	1%	238	-9%	275	2%	2.7	155%	0.4	-46%	97%	80%	89%	58%	86%	62%	92%	68%
250	-6%	24	-13%	19	-16%	0.1	484%	0.9	1301%	96%	75%	NA	NA	NA	NA	91%	62%
536	New	64	New	59	New	1.7	New	1.9	New	97%	78%	83%	42%	NA	NA	94%	69%
576	-2%	47	-5%	41	-3%	0.9	71%	1.1	59%	92%	64%	95%	72%	NA	NA	85%	57%
7,076	2%	563	12%	538	2%	11.5	97%	4.1	0%	92%	69%	81%	45%	83%	45%	79%	43%
960	13%	67	8%	53	-14%	2.4	147%	2.7	-31%	96%	72%	86%	56%	NA	NA	88%	57%
247	-3%	20	-17%	17	0%	0.4	-5%	0.3	-36%	85%	58%	60%	40%	NA	NA	76%	45%
6,068	7%	382	9%	460	16%	10.2	136%	5.8	40%	83%	60%	76%	42%	70%	36%	75%	41%
456,684	3%	34,075	4%	33,785	8%	888.7	94%	830.8	37%	91%	69%	77%	45%	71%	37%	79%	47%

*KSDE does not require students to have full comprehension of grade-appropriate material to Meet Standards. Full Comprehension is considered to be Advanced and Exceeds Standard. 25

Co.	USD	District Name	FY 2012 Spending Per Pupil							FY 2012 Revenue Per Pupil					
			Total	% Chg. '05-'12	Instr.	% Chg. '05-'12	Instr. % of Total	Admin.	% Chg. '05-'12	State	% Chg. '05-'12	Federal	% Chg. '05-'12	Local	% Chg. '05-'12
FO	381	Spearville	12,776	34%	6,845	35%	54%	1,160	5%	8,238	13%	273	-20%	4,265	126%
FR	288	Central Heights	12,817	37%	7,472	45%	58%	1,436	48%	9,304	33%	676	50%	2,837	46%
FR	290	Ottawa	11,760	52%	6,512	42%	55%	999	21%	7,104	36%	936	28%	3,720	108%
FR	289	Wellsville	12,201	20%	6,711	23%	55%	1,026	24%	7,687	16%	304	32%	4,210	27%
FR	287	West Franklin	13,533	41%	7,939	35%	59%	1,287	52%	8,959	26%	621	89%	3,953	85%
GE	475	Geary County	11,063	20%	5,768	14%	52%	1,109	4%	6,538	39%	1,978	-39%	2,547	110%
GO	291	Grinnell	14,719	14%	8,698	9%	59%	1,840	43%	7,045	-23%	730	75%	6,944	106%
GO	293	Quinter	13,342	12%	7,783	7%	58%	1,374	8%	7,180	-12%	460	2%	5,702	70%
GO	292	Wheatland	18,163	62%	11,447	68%	63%	2,430	65%	9,428	15%	695	4%	8,040	235%
GH	281	Graham County	12,764	10%	7,380	9%	58%	1,339	25%	5,468	-32%	494	-14%	6,802	130%
GT	214	Ulysses	10,734	19%	6,252	33%	58%	1,198	25%	3,626	26%	1,042	17%	6,066	16%
GY	102	Cimarron-Ensign	11,186	14%	6,645	30%	59%	915	-11%	7,493	17%	889	140%	2,804	-7%
GY	476	Copeland	18,496	18%	9,021	18%	49%	2,345	-6%	9,550	9%	881	-8%	8,065	35%
GY	477	Ingalls	13,256	29%	7,467	29%	56%	1,416	14%	8,187	13%	553	-16%	4,516	90%
GY	371	Montezuma	14,958	22%	7,981	21%	53%	2,034	31%	8,811	24%	589	57%	5,558	16%
GL	200	Greeley County	16,912	43%	8,214	28%	49%	1,606	58%	7,110	24%	692	11%	9,110	67%
State of Kansas			12,656	30%	6,824	32%	54%	1,152	18%	6,983	31%	981	9%	4,692	36%

FTE Enrollment		FTE Employment FY 2012				Unencumbered Carryover Cash (millions)				2012 State Assessment - Reading*							
FY 2012	% Chg. '05-'12	Teachers	% Chg. '05-'12	All Other	% Chg. '05-'12	Current Oper.	% Chg. '05-'12	Capital and Debt	% Chg. '05-'12	White Meets Std.	White Full Comp.	Hispanic Meets Std.	Hispanic Full Comp.	African American Meets Std.	African American Full Comp.	Low Income Meets Std.	Low Income Full Comp.
347	2%	34	31%	19	0%	0.7	333%	0.6	-13%	95%	74%	91%	73%	NA	NA	95%	71%
571	-7%	44	-9%	34	-1%	1.0	374%	0.8	33%	86%	57%	79%	36%	NA	NA	83%	46%
2,390	2%	171	6%	149	11%	4.3	25%	5.2	13%	86%	60%	80%	51%	93%	41%	79%	47%
791	-1%	61	1%	45	-3%	0.5	18%	1.6	33%	93%	71%	83%	44%	NA	NA	88%	64%
625	-28%	55	-29%	44	-17%	3.5	338%	1.0	88%	90%	60%	90%	40%	NA	NA	88%	55%
7,810	29%	583	29%	580	14%	17.3	546%	4.8	-30%	90%	63%	85%	52%	81%	49%	84%	52%
84	-30%	11	-38%	8	-31%	0.3	155%	0.4	18%	98%	73%	NA	NA	NA	NA	95%	67%
282	-15%	25	-31%	33	-25%	0.3	-12%	0.3	-17%	95%	67%	NA	NA	NA	NA	96%	64%
103	-44%	14	-21%	17	-26%	0.5	30%	0.2	-49%	97%	76%	NA	NA	NA	NA	90%	70%
382	-6%	28	-24%	15	-56%	0.9	16%	0.6	41%	92%	67%	NA	NA	100%	40%	85%	55%
1,619	-4%	108	-5%	116	-11%	3.6	80%	2.5	-41%	83%	63%	69%	36%	NA	NA	68%	36%
678	5%	52	12%	74	49%	0.6	44%	1.0	-31%	98%	77%	89%	48%	NA	NA	93%	52%
121	4%	13	-7%	11	-39%	0.7	213%	0.6	83%	86%	67%	73%	27%	NA	NA	79%	48%
229	-6%	22	-1%	20	-25%	0.4	140%	0.4	104%	95%	80%	84%	44%	NA	NA	80%	46%
233	-4%	20	-3%	17	-11%	1.5	717%	0.6	25%	87%	52%	79%	64%	NA	NA	81%	63%
198	-27%	20	-23%	26	-19%	0.5	94%	0.5	24%	90%	61%	75%	41%	NA	NA	86%	50%
456,684	3%	34,075	4%	33,785	8%	888.7	94%	830.8	37%	91%	69%	77%	45%	71%	37%	79%	47%

*KSDE does not require students to have full comprehension of grade-appropriate material to Meet Standards. Full Comprehension is considered to be Advanced and Exceeds Standard. 27

Co.	USD	District Name	FY 2012 Spending Per Pupil							FY 2012 Revenue Per Pupil					
			Total	% Chg. '05-'12	Instr.	% Chg. '05-'12	Instr. % of Total	Admin.	% Chg. '05-'12	State	% Chg. '05-'12	Federal	% Chg. '05-'12	Local	% Chg. '05-'12
GW	389	Eureka	13,374	14%	6,738	12%	50%	1,493	76%	9,493	29%	1,180	26%	2,701	-21%
GW	390	Hamilton	17,309	29%	10,449	36%	60%	2,311	35%	10,728	10%	867	41%	5,714	88%
GW	386	Madison-Virgil	12,481	16%	7,173	15%	57%	1,382	11%	8,804	10%	648	-10%	3,029	47%
HM	494	Syracuse	14,526	18%	7,647	39%	53%	1,405	12%	7,052	61%	1,053	7%	6,421	-8%
HP	361	Anthony-Harper	12,798	28%	7,302	33%	57%	1,120	-8%	8,627	29%	746	7%	3,425	31%
HP	511	Attica	15,311	28%	8,446	23%	55%	1,935	-8%	8,325	4%	501	-15%	6,485	94%
HV	369	Burrton	13,950	26%	7,911	25%	57%	1,549	12%	8,786	17%	730	12%	4,434	53%
HV	440	Halstead	11,879	28%	6,153	28%	52%	1,150	-5%	8,214	23%	465	46%	3,200	43%
HV	460	Hesston	11,301	13%	5,782	21%	51%	1,036	4%	7,791	18%	339	51%	3,171	1%
HV	373	Newton	13,177	42%	7,740	53%	59%	1,055	17%	7,442	38%	1,002	-4%	4,733	68%
HV	439	Sedgwick	10,653	34%	6,024	29%	57%	987	16%	8,197	19%	463	31%	1,993	188%
HS	507	Satanta	15,675	44%	9,223	46%	59%	1,636	22%	2,583	-37%	952	30%	12,140	99%
HS	374	Sublette	14,817	21%	8,249	46%	56%	1,256	-12%	5,099	47%	1,114	96%	8,604	5%
HG	227	Hodgeman Co.	15,077	47%	7,289	36%	48%	969	32%	8,553	24%	519	36%	6,005	104%
JA	336	Holton	16,270	39%	11,213	43%	69%	980	7%	8,175	22%	1,297	-5%	6,798	88%
JA	335	North Jackson	11,991	35%	6,952	29%	58%	971	11%	9,100	24%	463	41%	2,428	105%
State of Kansas			12,656	30%	6,824	32%	54%	1,152	18%	6,983	31%	981	9%	4,692	36%

FTE Enrollment		FTE Employment FY 2012				Unencumbered Carryover Cash (millions)				2012 State Assessment - Reading*							
FY 2012	% Chg. '05-'12	Teachers	% Chg. '05-'12	All Other	% Chg. '05-'12	Current Oper.	% Chg. '05-'12	Capital and Debt	% Chg. '05-'12	Meets Std.	Full Comp.	Meets Std.	Full Comp.	African Meets Std.	American Full Comp.	Meets Std.	Full Comp.
618	-9%	54	-11%	76	16%	2.3	3710%	1.7	137%	93%	69%	89%	67%	NA	NA	91%	68%
87	-21%	19	36%	19	1%	0.2	41%	0.2	-66%	85%	53%	NA	NA	NA	NA	83%	46%
250	3%	27	9%	24	19%	0.4	89%	0.3	-31%	90%	64%	NA	NA	NA	NA	84%	51%
453	-3%	41	5%	43	11%	1.7	207%	2.2	40%	95%	77%	83%	45%	NA	NA	86%	52%
822	-10%	66	-5%	59	-8%	1.4	174%	1.1	10%	91%	68%	91%	69%	NA	NA	88%	62%
150	16%	17	-8%	11	31%	0.2	56%	0.5	-2%	89%	67%	100%	50%	NA	NA	82%	55%
252	-1%	26	8%	24	-2%	0.7	349%	0.6	-13%	90%	64%	NA	NA	NA	NA	89%	60%
759	10%	57	12%	46	9%	1.0	36%	1.5	39%	94%	71%	92%	58%	NA	NA	88%	60%
810	6%	56	4%	46	0%	1.0	64%	1.4	26%	97%	80%	94%	61%	100%	73%	94%	65%
3,472	0%	281	6%	293	9%	4.8	121%	4.0	34%	90%	70%	85%	58%	78%	37%	84%	56%
525	1%	35	4%	27	5%	2.1	302%	2.1	13%	98%	76%	80%	80%	NA	NA	93%	70%
297	-24%	34	-8%	30	11%	1.1	189%	0.9	19%	93%	72%	87%	51%	NA	NA	85%	52%
481	1%	41	11%	52	27%	0.8	255%	0.9	1%	89%	66%	82%	39%	NA	NA	83%	49%
303	2%	25	-4%	28	-13%	1.1	660%	0.7	195%	92%	68%	92%	62%	NA	NA	90%	55%
1,113	0%	113	5%	128	20%	2.2	74%	1.4	-36%	94%	66%	88%	50%	NA	NA	89%	51%
377	-11%	30	-7%	21	2%	1.1	175%	1.3	89%	92%	64%	NA	NA	NA	NA	90%	60%
456,684	3%	34,075	4%	33,785	8%	888.7	94%	830.8	37%	91%	69%	77%	45%	71%	37%	79%	47%

*KSDE does not require students to have full comprehension of grade-appropriate material to Meet Standards. Full Comprehension is considered to be Advanced and Exceeds Standard. 29

Co.	USD	District Name	FY 2012 Spending Per Pupil							FY 2012 Revenue Per Pupil					
			Total	% Chg. '05-'12	Instr.	% Chg. '05-'12	Instr. % of Total	Admin.	% Chg. '05-'12	State	% Chg. '05-'12	Federal	% Chg. '05-'12	Local	% Chg. '05-'12
JA	337	Royal Valley	12,376	17%	6,585	16%	53%	1,260	23%	8,667	22%	1,120	-39%	2,589	64%
JF	339	Jefferson Co. North	13,204	28%	7,542	38%	57%	1,361	7%	9,993	27%	515	34%	2,696	31%
JF	340	Jefferson West	11,606	27%	6,807	28%	59%	989	7%	8,169	21%	362	39%	3,075	45%
JF	342	McLouth	11,705	29%	7,201	39%	62%	1,285	3%	8,012	18%	533	48%	3,160	68%
JF	341	Oskaloosa	13,918	36%	8,427	43%	61%	1,343	14%	9,753	29%	840	26%	3,325	62%
JF	343	Perry	13,060	43%	7,708	40%	59%	1,052	14%	8,222	35%	601	93%	4,237	55%
JF	338	Valley Falls	12,714	34%	7,003	14%	55%	1,790	56%	9,878	36%	466	16%	2,370	30%
JW	107	Rock Hills	14,874	New	8,211	New	55%	1,719	New	12,834	New	663	New	1,377	New
JO	229	Blue Valley	12,934	24%	6,161	28%	48%	1,136	22%	4,818	35%	291	17%	7,825	18%
JO	232	De Soto	11,993	19%	5,529	18%	46%	770	-29%	6,383	38%	342	6%	5,268	3%
JO	231	Gardner-Edgerton	12,621	26%	6,022	33%	48%	971	-6%	7,159	52%	652	36%	4,810	0%
JO	233	Olathe	12,316	22%	6,658	28%	54%	947	15%	6,618	42%	604	32%	5,094	2%
JO	512	Shawnee Mission	12,374	38%	6,449	32%	52%	926	25%	4,393	35%	706	69%	7,275	38%
JO	230	Spring Hill	10,815	15%	5,473	13%	51%	944	30%	6,933	38%	435	0%	3,447	-13%
KE	216	Deerfield	16,746	44%	10,091	74%	60%	1,638	25%	6,242	50%	2,557	73%	7,947	33%
KE	215	Lakin	14,479	26%	7,460	34%	52%	1,421	20%	3,335	-6%	880	98%	10,264	37%
State of Kansas			12,656	30%	6,824	32%	54%	1,152	18%	6,983	31%	981	9%	4,692	36%

FTE Enrollment		FTE Employment FY 2012				Unencumbered Carryover Cash (millions)				2012 State Assessment - Reading*							
FY 2012	% Chg. '05-'12	Teachers	% Chg. '05-'12	All Other	% Chg. '05-'12	Current Oper.	% Chg. '05-'12	Capital and Debt	% Chg. '05-'12	Meets Std.	Full Comp.	Meets Std.	Full Comp.	African Meets Std.	American Full Comp.	Meets Std.	Full Comp.
905	-2%	63	9%	67	15%	1.4	72%	0.7	35%	96%	79%	92%	62%	NA	NA	93%	65%
463	-6%	35	-5%	35	-5%	1.1	137%	1.0	-8%	94%	71%	NA	NA	NA	NA	92%	65%
850	-11%	54	-12%	64	-16%	1.2	59%	1.0	-25%	91%	65%	83%	56%	73%	46%	87%	52%
496	-11%	37	-5%	28	-5%	1.0	130%	0.7	53%	90%	55%	NA	NA	NA	NA	84%	46%
509	-17%	40	-16%	37	-6%	1.4	2830%	0.8	3869%	92%	71%	80%	40%	NA	NA	91%	62%
865	-10%	59	-11%	52	-13%	1.9	89%	1.8	22%	93%	65%	87%	40%	NA	NA	89%	55%
395	-8%	29	-12%	32	-32%	0.6	434%	0.9	24%	97%	75%	NA	NA	NA	NA	97%	73%
293	New	27	New	30	New	2.6	382%	1.9	156%	89%	59%	NA	NA	NA	NA	85%	51%
20,910	14%	1,452	15%	1,306	20%	63.8	128%	62.6	4%	98%	85%	92%	71%	92%	64%	93%	66%
6,545	44%	465	34%	339	37%	7.4	152%	25.9	80%	96%	80%	93%	68%	89%	56%	91%	62%
4,957	46%	352	46%	329	18%	1.5	-24%	12.5	30%	96%	77%	94%	68%	93%	72%	94%	67%
26,427	18%	1,874	12%	1,750	24%	32.9	6%	43.5	3%	95%	77%	86%	54%	87%	54%	86%	54%
26,546	-5%	1,743	-3%	1,502	-3%	30.8	17%	36.7	12%	95%	76%	82%	49%	78%	42%	83%	50%
2,755	71%	145	31%	152	54%	2.5	33%	8.4	58%	93%	72%	92%	64%	84%	63%	86%	61%
254	-24%	27	-17%	27	-31%	1.5	72%	0.4	-29%	87%	53%	78%	31%	NA	NA	77%	38%
626	-4%	55	7%	55	38%	4.5	106%	3.1	35%	97%	74%	95%	49%	NA	NA	95%	61%
456,684	3%	34,075	4%	33,785	8%	888.7	94%	830.8	37%	91%	69%	77%	45%	71%	37%	79%	47%

*KSDE does not require students to have full comprehension of grade-appropriate material to Meet Standards. Full Comprehension is considered to be Advanced and Exceeds Standard. 31

Co.	USD	District Name	FY 2012 Spending Per Pupil							FY 2012 Revenue Per Pupil					
			Total	% Chg. '05-'12	Instr.	% Chg. '05-'12	Instr. % of Total	Admin.	% Chg. '05-'12	State	% Chg. '05-'12	Federal	% Chg. '05-'12	Local	% Chg. '05-'12
KM	332	Cunningham	17,309	27%	9,622	25%	56%	2,257	37%	4,827	-18%	647	-44%	11,835	80%
KM	331	Kingman-Norwich	12,138	26%	6,671	24%	55%	1,040	24%	7,465	23%	671	-16%	4,002	45%
KW	422	Greensburg	12,670	31%	6,588	21%	52%	1,855	37%	5,640	-7%	1,611	249%	5,419	72%
KW	474	Haviland	17,420	29%	10,967	31%	63%	2,236	8%	8,129	14%	576	-5%	8,715	50%
LB	505	Chetopa-St. Paul	14,564	26%	9,138	26%	63%	1,167	-30%	10,397	25%	965	-47%	3,202	128%
LB	506	Labette County	10,886	32%	5,964	20%	55%	996	55%	7,763	28%	704	49%	2,419	41%
LB	504	Oswego	13,538	38%	7,433	41%	55%	1,401	10%	9,928	23%	767	21%	2,843	154%
LB	503	Parsons	12,881	43%	7,099	32%	55%	1,213	18%	8,427	40%	1,110	-6%	3,344	86%
LE	482	Dighton	13,914	16%	7,644	22%	55%	1,684	-21%	5,311	-19%	543	-11%	8,060	64%
LE	468	Healy	25,047	95%	14,063	82%	56%	3,556	36%	9,088	2%	1,102	206%	14,857	311%
LV	458	Basehor-Linwood	10,661	36%	5,266	57%	49%	959	-24%	6,068	26%	192	56%	4,401	53%
LV	449	Easton	13,115	33%	6,980	30%	53%	1,411	21%	8,782	22%	368	40%	3,965	69%
LV	207	Ft Leavenworth	11,075	-11%	5,484	14%	50%	946	-11%	4,687	9%	6,388	-4%	0	-100%
LV	469	Lansing	9,129	26%	5,461	43%	60%	611	-5%	6,108	26%	328	92%	2,693	21%
LV	453	Leavenworth	18,277	72%	9,633	65%	53%	1,708	60%	8,097	54%	1,649	10%	8,531	120%
LV	464	Tonganoxie	9,962	32%	5,710	22%	57%	692	8%	6,371	27%	329	66%	3,262	40%
State of Kansas			12,656	30%	6,824	32%	54%	1,152	18%	6,983	31%	981	9%	4,692	36%

FTE Enrollment		FTE Employment FY 2012				Unencumbered Carryover Cash (millions)				2012 State Assessment - Reading*							
FY 2012	% Chg. '05-'12	Teachers	% Chg. '05-'12	All Other	% Chg. '05-'12	Current Oper.	% Chg. '05-'12	Capital and Debt	% Chg. '05-'12	Meets Std.	Full Comp.	Meets Std.	Full Comp.	African Meets Std.	American Full Comp.	Meets Std.	Full Comp.
167	-27%	18	-32%	15	-44%	0.4	12%	0.7	482%	88%	64%	NA	NA	NA	NA	87%	58%
964	-13%	68	-13%	53	-18%	1.3	69%	2.3	36%	89%	63%	94%	61%	NA	NA	86%	56%
434	45%	25	-7%	32	61%	1.8	262%	2.6	712%	91%	68%	62%	34%	NA	NA	77%	48%
117	-30%	11	-34%	10	-33%	0.7	209%	0.4	149%	96%	85%	NA	NA	NA	NA	100%	89%
456	56%	49	90%	48	91%	1.0	249%	1.1	531%	89%	60%	NA	NA	NA	NA	87%	55%
1,608	-2%	100	-5%	84	-10%	1.8	173%	1.8	183%	95%	70%	95%	74%	83%	58%	94%	64%
472	-5%	37	-7%	29	-13%	1.4	179%	1.0	-2%	97%	72%	NA	NA	NA	NA	97%	69%
1,206	-19%	80	-27%	84	-3%	2.0	314%	1.8	160%	91%	68%	89%	63%	88%	48%	90%	57%
229	-5%	24	7%	39	132%	0.6	194%	0.5	3%	96%	74%	83%	42%	NA	NA	90%	56%
67	-43%	14	8%	18	9%	0.4	28%	0.1	-65%	82%	59%	92%	69%	NA	NA	83%	55%
2,119	4%	109	10%	83	-5%	2.5	244%	3.4	232%	96%	76%	95%	71%	88%	64%	91%	62%
671	-3%	51	4%	51	59%	1.2	293%	1.3	6%	91%	66%	NA	NA	NA	NA	90%	59%
1,939	18%	119	7%	104	27%	3.3	4812%	21.3	1429%	95%	80%	89%	71%	90%	59%	83%	58%
2,540	21%	132	13%	55	-34%	5.0	274%	4.6	44%	94%	71%	92%	63%	80%	51%	84%	55%
3,546	-10%	389	2%	577	33%	9.2	366%	9.2	136%	77%	45%	73%	41%	59%	23%	66%	31%
1,812	15%	114	21%	97	19%	2.1	291%	2.3	94%	90%	62%	74%	43%	NA	NA	84%	48%
456,684	3%	34,075	4%	33,785	8%	888.7	94%	830.8	37%	91%	69%	77%	45%	71%	37%	79%	47%

*KSDE does not require students to have full comprehension of grade-appropriate material to Meet Standards. Full Comprehension is considered to be Advanced and Exceeds Standard. 33

Co.	USD	District Name	FY 2012 Spending Per Pupil							FY 2012 Revenue Per Pupil					
			Total	% Chg. '05-'12	Instr.	% Chg. '05-'12	Instr. % of Total	Admin.	% Chg. '05-'12	State	% Chg. '05-'12	Federal	% Chg. '05-'12	Local	% Chg. '05-'12
LC	298	Lincoln	14,577	33%	8,410	37%	58%	1,729	46%	8,795	29%	569	20%	5,213	43%
LC	299	Sylvan Grove	12,511	17%	6,946	17%	56%	1,339	-7%	7,773	4%	582	17%	4,156	49%
LN	346	Jayhawk	13,368	15%	7,225	17%	54%	1,538	29%	8,562	16%	664	-9%	4,142	16%
LN	344	Pleasanton	12,388	31%	7,085	30%	57%	2,206	58%	9,364	28%	818	30%	2,206	46%
LN	362	Prairie View	14,092	27%	7,353	41%	52%	1,267	29%	5,982	35%	576	50%	7,534	20%
LG	274	Oakley	13,185	32%	8,007	27%	61%	1,362	2%	5,570	-15%	498	-15%	7,117	154%
LG	275	Triplains	17,141	17%	9,961	11%	58%	2,105	3%	6,690	-14%	564	4%	9,887	58%
LY	253	Emporia	13,764	34%	8,048	35%	58%	1,022	7%	8,069	35%	1,263	-31%	4,432	79%
LY	251	North Lyon Co.	15,779	53%	7,895	45%	50%	1,893	69%	9,113	25%	629	64%	6,037	128%
LY	252	Southern Lyon Co.	14,125	39%	7,441	41%	53%	987	8%	8,261	17%	510	53%	5,354	92%
MN	397	Centre	11,869	3%	6,648	-2%	56%	1,130	24%	7,995	6%	530	-17%	3,344	-1%
MN	410	Durham-Hill.-Lehigh	13,098	30%	7,293	30%	56%	1,433	39%	8,790	26%	478	5%	3,830	46%
MN	411	Goessel	13,879	22%	8,276	34%	60%	1,711	57%	9,493	16%	479	53%	3,907	37%
MN	408	Marion-Florence	12,953	38%	7,372	36%	57%	1,240	38%	8,981	27%	584	45%	3,388	75%
MN	398	Peabody-Burns	15,564	47%	8,229	47%	53%	2,185	93%	9,108	23%	637	14%	5,819	121%
MS	364	Marysville	16,258	44%	11,249	69%	69%	1,225	11%	6,523	6%	919	93%	8,816	91%
State of Kansas			12,656	30%	6,824	32%	54%	1,152	18%	6,983	31%	981	9%	4,692	36%

FTE Enrollment		FTE Employment FY 2012				Unencumbered Carryover Cash (millions)				2012 State Assessment - Reading*							
FY 2012	% Chg. '05-'12	Teachers	% Chg. '05-'12	All Other	% Chg. '05-'12	Current Oper.	% Chg. '05-'12	Capital and Debt	% Chg. '05-'12	Meets Std.	Full Comp.	Meets Std.	Full Comp.	African Meets Std.	American Full Comp.	Meets Std.	Full Comp.
345	-4%	30	-7%	29	-21%	0.5	105%	1.1	39%	94%	65%	NA	NA	NA	NA	92%	55%
237	46%	18	21%	23	42%	0.3	141%	0.2	-53%	95%	66%	80%	70%	NA	NA	93%	65%
497	-12%	41	-11%	25	-28%	1.5	72%	1.7	-26%	92%	63%	NA	NA	NA	NA	89%	53%
319	-20%	40	7%	39	22%	0.4	23%	0.6	-30%	77%	41%	NA	NA	NA	NA	72%	40%
927	-8%	73	14%	65	-13%	2.0	267%	3.3	20%	93%	64%	NA	NA	NA	NA	92%	55%
401	-3%	37	3%	32	-13%	0.6	46%	0.6	18%	92%	72%	NA	NA	NA	NA	85%	64%
81	-4%	15	-1%	12	10%	0.2	107%	0.3	49%	81%	68%	NA	NA	NA	NA	70%	57%
4,299	-6%	380	0%	408	2%	6.9	-10%	4.4	-52%	91%	68%	80%	44%	71%	31%	81%	47%
418	-30%	37	-26%	40	-9%	0.6	15%	0.4	-34%	94%	60%	81%	56%	NA	NA	91%	61%
506	-12%	42	-4%	29	-26%	0.7	70%	1.4	40%	92%	68%	90%	90%	NA	NA	91%	63%
328	28%	21	-20%	15	-21%	0.7	87%	0.6	18%	90%	63%	NA	NA	NA	NA	92%	55%
565	-15%	38	-18%	41	-16%	0.9	47%	1.0	135%	91%	67%	70%	39%	NA	NA	85%	53%
258	-9%	21	-10%	22	5%	0.5	53%	0.6	-8%	95%	71%	NA	NA	NA	NA	90%	55%
532	-17%	37	-16%	31	-16%	0.6	-1%	1.3	21%	94%	68%	NA	NA	NA	NA	91%	61%
294	-29%	26	-21%	37	18%	0.8	45%	0.7	-19%	87%	50%	NA	NA	NA	NA	84%	42%
690	-9%	60	-9%	126	9%	1.3	1%	1.0	-19%	95%	68%	91%	64%	NA	NA	90%	58%
456,684	3%	34,075	4%	33,785	8%	888.7	94%	830.8	37%	91%	69%	77%	45%	71%	37%	79%	47%

*KSDE does not require students to have full comprehension of grade-appropriate material to Meet Standards. Full Comprehension is considered to be Advanced and Exceeds Standard. 35

Co.	USD	District Name	FY 2012 Spending Per Pupil							FY 2012 Revenue Per Pupil					
			Total	% Chg. '05-'12	Instr.	% Chg. '05-'12	Instr. % of Total	Admin.	% Chg. '05-'12	State	% Chg. '05-'12	Federal	% Chg. '05-'12	Local	% Chg. '05-'12
MS	498	Valley Heights	15,446	29%	8,327	20%	54%	1,702	50%	10,376	26%	790	21%	4,280	39%
MS	380	Vermillion	13,144	23%	7,512	28%	57%	1,192	7%	8,535	21%	567	-17%	4,042	35%
MP	419	Canton-Galva	14,473	26%	7,594	23%	52%	1,495	1%	7,862	7%	596	28%	6,015	64%
MP	448	Inman	12,337	27%	7,753	35%	63%	1,192	34%	7,571	11%	355	3%	4,411	72%
MP	418	McPherson	14,641	52%	8,633	62%	59%	1,101	27%	5,898	38%	1,452	82%	7,291	60%
MP	423	Moundridge	13,101	13%	7,048	12%	54%	1,415	19%	6,439	15%	355	40%	6,307	10%
MP	400	Smoky Valley	12,005	25%	6,288	35%	52%	1,223	21%	7,534	21%	382	14%	4,089	35%
ME	225	Fowler	17,518	36%	8,636	15%	49%	2,108	48%	9,490	27%	660	27%	7,368	50%
ME	226	Meade	12,835	30%	7,108	21%	55%	1,242	26%	5,538	8%	461	10%	6,836	56%
MI	416	Louisburg	11,533	22%	5,194	10%	45%	1,055	48%	5,360	18%	254	33%	5,919	25%
MI	367	Osawatomie	12,540	29%	7,027	35%	56%	1,466	26%	8,875	39%	825	23%	2,840	6%
MI	368	Paola	17,260	27%	11,740	34%	68%	1,295	48%	6,597	31%	1,595	13%	9,068	27%
MC	273	Beloit	18,676	23%	11,675	54%	63%	1,357	25%	9,493	46%	1,401	-2%	7,782	8%
MC	272	Waconda	14,320	29%	8,933	37%	62%	1,918	18%	9,554	32%	834	9%	3,932	27%
MG	436	Caney Valley	9,643	10%	6,205	24%	64%	1,030	9%	7,406	3%	613	38%	1,624	44%
MG	447	Cherryvale	10,407	10%	6,487	8%	62%	970	-1%	8,076	8%	726	-5%	1,605	27%
State of Kansas			12,656	30%	6,824	32%	54%	1,152	18%	6,983	31%	981	9%	4,692	36%

FTE Enrollment		FTE Employment FY 2012				Unencumbered Carryover Cash (millions)				2012 State Assessment - Reading*							
FY 2012	% Chg. '05-'12	Teachers	% Chg. '05-'12	All Other	% Chg. '05-'12	Current Oper.	% Chg. '05-'12	Capital and Debt	% Chg. '05-'12	Meets Std.	Full Comp.	Meets Std.	Full Comp.	African Meets Std.	American Full Comp.	Meets Std.	Full Comp.
345	-10%	32	3%	32	-14%	0.6	83%	0.8	-7%	88%	59%	90%	60%	NA	NA	84%	51%
496	-9%	51	14%	49	31%	0.7	6%	0.7	-31%	98%	87%	NA	NA	NA	NA	95%	78%
380	-4%	39	13%	35	-5%	0.7	270%	0.7	27%	91%	74%	NA	NA	NA	NA	87%	61%
429	-3%	32	-2%	33	-8%	0.5	17%	0.9	-13%	95%	65%	NA	NA	NA	NA	96%	60%
2,284	-5%	197	-7%	354	18%	4.4	104%	4.3	60%	70%	35%	61%	32%	61%	28%	62%	31%
421	1%	30	-12%	27	-20%	0.8	206%	0.8	34%	90%	64%	76%	48%	NA	NA	87%	48%
977	3%	67	3%	59	7%	2.5	60%	2.8	15%	93%	68%	87%	73%	NA	NA	91%	59%
157	-5%	19	-1%	14	-11%	0.3	175%	0.4	115%	94%	71%	67%	67%	NA	NA	85%	67%
445	-6%	36	1%	32	-26%	1.0	86%	0.7	2%	95%	72%	86%	33%	NA	NA	93%	62%
1,672	18%	91	6%	95	38%	1.7	52%	4.2	55%	96%	80%	88%	80%	NA	NA	88%	64%
1,102	-4%	73	-12%	84	-5%	0.4	227%	1.2	66%	87%	57%	88%	38%	NA	NA	85%	54%
1,993	-1%	193	-3%	395	8%	7.2	264%	5.1	300%	91%	68%	90%	63%	86%	55%	85%	57%
741	-2%	79	4%	107	17%	3.8	242%	2.1	484%	90%	62%	NA	NA	NA	NA	85%	52%
334	-1%	35	10%	42	34%	0.3	3%	0.7	-22%	97%	86%	NA	NA	NA	NA	95%	81%
844	2%	58	4%	44	1%	1.4	324%	0.8	38%	91%	62%	92%	69%	NA	NA	87%	60%
947	58%	60	27%	62	54%	1.3	307%	1.6	108%	87%	63%	88%	53%	NA	NA	86%	58%
456,684	3%	34,075	4%	33,785	8%	888.7	94%	830.8	37%	91%	69%	77%	45%	71%	37%	79%	47%

*KSDE does not require students to have full comprehension of grade-appropriate material to Meet Standards. Full Comprehension is considered to be Advanced and Exceeds Standard. 37

Co.	USD	District Name	FY 2012 Spending Per Pupil							FY 2012 Revenue Per Pupil					
			Total	% Chg. '05-'12	Instr.	% Chg. '05-'12	Instr. % of Total	Admin.	% Chg. '05-'12	State	% Chg. '05-'12	Federal	% Chg. '05-'12	Local	% Chg. '05-'12
MG	445	Coffeyville	12,253	28%	6,948	31%	57%	914	-2%	5,003	-15%	1,129	34%	6,121	114%
MG	446	Independence	11,210	43%	6,009	24%	54%	1,169	29%	6,969	37%	832	15%	3,409	69%
MR	417	Morris County	12,476	34%	6,907	16%	55%	1,177	15%	7,273	12%	527	-42%	4,676	142%
MT	218	Elkhart	9,931	-4%	4,442	-31%	45%	3,343	234%	5,812	39%	621	-50%	3,498	-28%
MT	217	Rolla	21,163	20%	10,215	29%	48%	2,086	6%	2,978	-34%	1,251	65%	16,934	38%
NM	115	Nemaha Central	17,345	New	10,634	New	61%	1,593	New	8,146	New	913	New	8,286	New
NM	113	Prairie Hills	12,245	New	6,808	New	56%	1,600	New	7,951	New	439	New	3,855	New
NO	413	Chanute	12,069	43%	6,884	35%	57%	885	27%	8,514	46%	741	-8%	2,814	58%
NO	101	Erie-Galesburg	18,262	96%	8,065	38%	44%	1,667	112%	9,857	48%	773	18%	7,632	277%
NS	303	Ness City	11,419	16%	6,061	21%	53%	1,516	7%	5,204	-18%	490	52%	5,725	77%
NS	106	Western Plains	17,538	35%	9,478	34%	54%	2,447	40%	5,690	-34%	542	-8%	11,306	202%
NT	212	Northern Valley	14,579	29%	8,589	35%	59%	2,060	21%	11,391	42%	643	-9%	2,545	-1%
NT	211	Norton	12,116	27%	7,301	30%	60%	1,427	25%	8,803	23%	505	6%	2,808	48%
OS	454	Burlingame	13,181	26%	7,243	37%	55%	1,342	19%	9,481	18%	458	17%	3,242	59%
OS	421	Lyndon	11,333	10%	7,535	35%	66%	1,322	23%	8,390	20%	309	14%	2,634	-13%
OS	456	Marais Des Cygnes	11,959	18%	7,196	24%	60%	1,748	43%	8,639	15%	690	-7%	2,630	39%
State of Kansas			12,656	30%	6,824	32%	54%	1,152	18%	6,983	31%	981	9%	4,692	36%

FTE Enrollment		FTE Employment FY 2012				Unencumbered Carryover Cash (millions)				2012 State Assessment - Reading*							
FY 2012	% Chg. '05-'12	Teachers	% Chg. '05-'12	All Other	% Chg. '05-'12	Current Oper.	% Chg. '05-'12	Capital and Debt	% Chg. '05-'12	Meets Std.	Full Comp.	Meets Std.	Full Comp.	Meets Std.	Full Comp.	Meets Std.	Full Comp.
1,784	-4%	121	9%	97	4%	2.4	231%	3.8	630%	86%	54%	71%	41%	72%	21%	80%	42%
1,901	-1%	123	-3%	103	-3%	2.5	126%	1.9	154%	87%	62%	76%	47%	65%	32%	81%	51%
753	-12%	60	-12%	50	-5%	1.3	34%	0.9	-18%	94%	71%	83%	66%	NA	NA	89%	62%
955	41%	38	-28%	65	-7%	1.1	119%	1.8	141%	87%	59%	78%	42%	46%	18%	80%	49%
171	-17%	21	-5%	22	-23%	0.4	-9%	3.5	33%	94%	66%	79%	33%	NA	NA	80%	42%
574	New	67	New	53	New	2.9	New	3.4	New	96%	82%	NA	NA	NA	NA	90%	65%
1,192	New	97	New	82	New	2.6	New	3.1	New	95%	74%	100%	69%	NA	NA	91%	60%
1,785	0%	115	-6%	96	6%	4.5	201%	6.4	243%	89%	55%	86%	59%	NA	NA	86%	48%
513	-52%	39	-55%	49	-39%	1.2	1%	2.1	38%	89%	57%	NA	NA	NA	NA	86%	48%
304	17%	28	29%	19	-9%	0.6	28%	1.0	43%	80%	50%	NA	NA	NA	NA	76%	34%
147	-23%	18	-5%	18	-13%	1.1	151%	0.5	104%	81%	62%	79%	29%	NA	NA	77%	43%
189	-4%	25	19%	24	-3%	0.3	67%	0.2	46%	95%	73%	NA	NA	NA	NA	93%	68%
714	10%	54	-1%	45	15%	1.4	158%	0.9	12%	90%	64%	NA	NA	NA	NA	86%	59%
316	-6%	27	-5%	20	-2%	0.7	59%	1.1	28%	96%	65%	NA	NA	NA	NA	95%	51%
435	0%	34	0%	31	-1%	0.3	-8%	1.3	14%	93%	63%	NA	NA	NA	NA	90%	57%
285	8%	25	-2%	18	61%	0.8	131%	0.8	19%	94%	65%	NA	NA	NA	NA	92%	59%
456,684	3%	34,075	4%	33,785	8%	888.7	94%	830.8	37%	91%	69%	77%	45%	71%	37%	79%	47%

*KSDE does not require students to have full comprehension of grade-appropriate material to Meet Standards. Full Comprehension is considered to be Advanced and Exceeds Standard. 39

Co.	USD	District Name	FY 2012 Spending Per Pupil							FY 2012 Revenue Per Pupil					
			Total	% Chg. '05-'12	Instr.	% Chg. '05-'12	Instr. % of Total	Admin.	% Chg. '05-'12	State	% Chg. '05-'12	Federal	% Chg. '05-'12	Local	% Chg. '05-'12
OS	420	Osage City	11,418	37%	6,851	52%	60%	1,033	22%	8,545	31%	495	42%	2,378	62%
OS	434	Santa Fe Trail	12,260	31%	6,511	21%	53%	1,256	14%	8,406	27%	510	-21%	3,344	59%
OB	392	Osborne County	14,992	55%	8,094	44%	54%	1,858	73%	9,789	31%	754	40%	4,449	165%
OT	239	North Ottawa Co.	12,488	33%	6,888	25%	55%	1,324	41%	8,542	29%	580	37%	3,366	44%
OT	240	Twin Valley	12,674	30%	6,426	13%	51%	1,155	6%	8,550	24%	487	15%	3,637	48%
PN	495	Ft Larned	14,942	25%	8,667	41%	58%	1,808	49%	9,961	52%	1,214	1%	3,767	-11%
PN	496	Pawnee Heights	11,480	-6%	7,421	1%	65%	1,654	4%	9,131	4%	452	-18%	1,897	-34%
PL	326	Logan	16,292	21%	10,561	23%	65%	1,689	20%	8,431	4%	633	19%	7,228	50%
PL	325	Phillipsburg	12,595	24%	7,320	24%	58%	1,365	13%	8,427	18%	560	42%	3,608	39%
PL	110	Thunder Ridge	14,756	New	8,812	New	60%	2,078	New	10,027	New	1,123	New	3,606	New
PT	321	Kaw Valley	13,748	30%	7,599	29%	55%	868	9%	3,414	-15%	761	-19%	9,573	70%
PT	322	Onaga-Hav.-Wheat.	14,387	41%	6,991	30%	49%	1,813	34%	8,458	19%	588	21%	5,341	104%
PT	323	Rock Creek	10,742	20%	6,165	22%	57%	993	9%	7,862	12%	370	0%	2,510	55%
PT	320	Wamego	15,564	47%	8,791	52%	56%	1,250	15%	7,588	23%	965	-2%	7,011	104%
PR	382	Pratt	12,430	40%	6,848	32%	55%	973	-11%	6,714	14%	472	-35%	5,244	131%
PR	438	Skyline Schools	11,715	21%	7,656	22%	65%	1,061	8%	7,573	7%	478	-16%	3,664	80%
State of Kansas			12,656	30%	6,824	32%	54%	1,152	18%	6,983	31%	981	9%	4,692	36%

FTE Enrollment		FTE Employment FY 2012				Unencumbered Carryover Cash (millions)				2012 State Assessment - Reading*							
FY 2012	% Chg. '05-'12	Teachers	% Chg. '05-'12	All Other	% Chg. '05-'12	Current Oper.	% Chg. '05-'12	Capital and Debt	% Chg. '05-'12	Meets Std.	Full Comp.	Meets Std.	Full Comp.	African Meets Std.	American Full Comp.	Meets Std.	Full Comp.
648	-11%	67	34%	36	6%	0.5	1%	1.2	6%	93%	62%	NA	NA	NA	NA	90%	51%
1,054	-16%	74	-16%	61	-9%	1.1	171%	0.9	46%	91%	60%	85%	50%	NA	NA	89%	52%
300	-23%	26	-19%	20	-17%	0.9	67%	1.0	4%	89%	67%	NA	NA	NA	NA	86%	55%
592	10%	44	-2%	46	-6%	1.6	276%	1.4	200%	90%	66%	NA	NA	NA	NA	83%	59%
588	-7%	50	3%	39	29%	0.7	3%	0.8	-43%	91%	66%	100%	58%	NA	NA	86%	57%
918	-1%	77	2%	179	30%	3.6	157%	2.7	84%	89%	58%	78%	46%	55%	36%	81%	40%
175	-1%	17	-3%	9	-64%	0.9	814%	0.6	204%	94%	73%	NA	NA	NA	NA	100%	76%
180	-2%	23	-12%	13	-1%	0.6	141%	0.4	100%	92%	66%	NA	NA	NA	NA	88%	66%
596	-2%	48	-4%	29	-9%	1.1	41%	0.5	-38%	95%	77%	NA	NA	NA	NA	92%	67%
240	New	24	New	20	New	1.5	New	1.5	New	96%	67%	NA	NA	NA	NA	91%	61%
1,115	4%	92	2%	109	-1%	1.9	-4%	0.2	-83%	93%	70%	91%	71%	62%	23%	90%	62%
315	-14%	25	-17%	28	22%	0.7	267%	0.7	17%	89%	70%	NA	NA	NA	NA	83%	65%
849	17%	58	13%	48	-9%	1.4	99%	2.5	139%	96%	80%	96%	60%	NA	NA	91%	66%
1,360	6%	134	7%	168	45%	2.2	175%	2.6	16%	93%	73%	83%	43%	NA	NA	90%	57%
1,088	-4%	70	-11%	60	-11%	0.8	-13%	0.9	-25%	93%	65%	79%	46%	NA	NA	85%	49%
377	-10%	32	-7%	20	-16%	0.4	-20%	0.1	-85%	91%	64%	54%	31%	NA	NA	78%	48%
456,684	3%	34,075	4%	33,785	8%	888.7	94%	830.8	37%	91%	69%	77%	45%	71%	37%	79%	47%

*KSDE does not require students to have full comprehension of grade-appropriate material to Meet Standards. Full Comprehension is considered to be Advanced and Exceeds Standard. 41

Co.	USD	District Name	FY 2012 Spending Per Pupil							FY 2012 Revenue Per Pupil					
			Total	% Chg. '05-'12	Instr.	% Chg. '05-'12	Instr. % of Total	Admin.	% Chg. '05-'12	State	% Chg. '05-'12	Federal	% Chg. '05-'12	Local	% Chg. '05-'12
RA	105	Rawlins County	13,448	8%	7,933	13%	59%	1,302	6%	7,631	-12%	653	17%	5,164	62%
RN	313	Buhler	10,912	27%	6,107	32%	56%	985	18%	6,394	31%	452	54%	4,066	19%
RN	310	Fairfield	17,360	59%	9,338	59%	54%	2,084	27%	8,484	28%	971	42%	7,905	120%
RN	312	Haven	11,967	28%	6,941	22%	58%	1,083	21%	7,612	22%	521	26%	3,834	43%
RN	308	Hutchinson	11,654	30%	6,453	44%	55%	1,133	16%	7,560	50%	1,789	14%	2,305	-3%
RN	309	Nickerson	11,873	33%	6,528	34%	55%	1,613	34%	7,901	35%	901	74%	3,071	20%
RN	311	Pretty Prairie	12,901	21%	7,178	23%	56%	1,378	31%	8,810	18%	452	-6%	3,639	34%
RP	426	Pike Valley	12,734	20%	7,981	21%	63%	1,403	20%	9,543	25%	661	9%	2,530	6%
RP	109	Republic County	12,173	New	7,387	New	61%	1,339	New	7,905	New	630	New	3,638	New
RC	401	Chase-Raymond	16,521	10%	9,238	10%	56%	1,517	-31%	8,143	-3%	836	14%	7,542	29%
RC	444	Little River	12,068	7%	6,615	9%	55%	1,600	14%	6,554	3%	384	-2%	5,130	13%
RC	405	Lyons	17,085	44%	10,892	47%	64%	1,448	23%	9,334	33%	1,580	16%	6,171	79%
RC	376	Sterling	13,931	42%	7,181	22%	52%	1,058	-35%	10,026	43%	469	-25%	3,436	58%
RL	384	Blue Valley - Riley	16,285	45%	8,500	37%	52%	2,352	57%	9,629	26%	1,003	-6%	5,653	126%
RL	383	Manhattan-Ogden	12,558	29%	6,507	20%	52%	977	7%	5,360	26%	1,146	-16%	6,052	47%
RL	378	Riley County	11,472	14%	5,728	14%	50%	1,096	-5%	7,735	7%	436	-5%	3,301	37%
State of Kansas			12,656	30%	6,824	32%	54%	1,152	18%	6,983	31%	981	9%	4,692	36%

FTE Enrollment		FTE Employment FY 2012				Unencumbered Carryover Cash (millions)				2012 State Assessment - Reading*							
FY 2012	% Chg. '05-'12	Teachers	% Chg. '05-'12	All Other	% Chg. '05-'12	Current Oper.	% Chg. '05-'12	Capital and Debt	% Chg. '05-'12	Meets Std.	Full Comp.	Meets Std.	Full Comp.	African Meets Std.	American Full Comp.	Meets Std.	Full Comp.
311	-10%	28	-20%	31	-4%	0.9	91%	0.4	-29%	91%	67%	50%	50%	NA	NA	88%	64%
2,147	0%	133	-18%	159	10%	2.1	75%	1.9	-13%	94%	70%	86%	57%	86%	57%	90%	60%
272	-28%	31	-10%	26	-25%	0.6	49%	0.7	58%	93%	58%	90%	80%	NA	NA	91%	51%
960	-10%	75	-8%	59	-12%	0.5	17%	1.1	19%	91%	70%	89%	58%	NA	NA	88%	59%
4,855	5%	346	5%	394	11%	18.3	117%	9.5	47%	88%	62%	83%	49%	73%	39%	83%	51%
1,097	0%	85	6%	78	20%	2.2	39%	2.2	-6%	95%	74%	85%	55%	77%	39%	92%	64%
266	-11%	20	-19%	19	-8%	0.7	53%	0.5	-11%	92%	72%	NA	NA	NA	NA	86%	57%
235	-10%	27	4%	30	-9%	0.9	343%	0.5	87%	88%	56%	NA	NA	NA	NA	80%	47%
465	New	36	New	30	New	1.4	88%	1.0	130%	92%	69%	NA	NA	NA	NA	86%	56%
147	-1%	18	-21%	14	-21%	0.5	423%	0.5	106%	73%	41%	NA	NA	NA	NA	65%	34%
342	21%	24	-5%	28	7%	0.1	-35%	0.5	15%	92%	74%	NA	NA	NA	NA	93%	64%
775	-8%	84	-3%	112	14%	3.7	196%	1.3	61%	94%	74%	89%	59%	NA	NA	92%	62%
506	0%	39	-6%	42	17%	0.3	-7%	0.6	330%	90%	62%	100%	67%	NA	NA	87%	48%
202	-18%	20	-10%	28	23%	0.4	54%	0.4	-4%	95%	76%	NA	NA	NA	NA	91%	63%
6,102	23%	473	26%	481	30%	12.4	108%	8.1	45%	94%	73%	90%	60%	88%	56%	91%	59%
756	17%	46	4%	32	-9%	1.6	186%	1.1	0%	95%	71%	74%	37%	NA	NA	87%	56%
456,684	3%	34,075	4%	33,785	8%	888.7	94%	830.8	37%	91%	69%	77%	45%	71%	37%	79%	47%

*KSDE does not require students to have full comprehension of grade-appropriate material to Meet Standards. Full Comprehension is considered to be Advanced and Exceeds Standard. 43

Co.	USD	District Name	FY 2012 Spending Per Pupil							FY 2012 Revenue Per Pupil					
			Total	% Chg. '05-'12	Instr.	% Chg. '05-'12	Instr. % of Total	Admin.	% Chg. '05-'12	State	% Chg. '05-'12	Federal	% Chg. '05-'12	Local	% Chg. '05-'12
RO	269	Palco	24,303	64%	10,849	28%	45%	3,027	58%	5,733	-25%	601	37%	17,969	165%
RO	270	Plainville	14,405	38%	7,610	34%	53%	1,475	-15%	5,378	-14%	661	43%	8,366	128%
RO	271	Stockton	14,687	51%	7,983	34%	54%	1,536	35%	7,252	3%	677	23%	6,758	218%
RH	395	LaCrosse	12,202	22%	7,611	23%	62%	1,371	24%	8,068	12%	609	5%	3,525	61%
RH	403	Otis-Bison	15,615	23%	8,599	36%	55%	2,125	18%	7,506	-5%	608	4%	7,501	80%
RS	399	Paradise	18,803	34%	10,324	31%	55%	2,700	26%	7,710	6%	571	-6%	10,522	72%
RS	407	Russell County	13,368	40%	7,374	44%	55%	1,496	60%	6,449	14%	884	11%	6,035	97%
SA	307	Ell-Saline	12,637	25%	6,428	21%	51%	1,325	14%	8,751	18%	549	40%	3,337	46%
SA	305	Salina	16,265	36%	8,963	48%	55%	1,163	15%	6,856	37%	2,207	17%	7,202	43%
SA	306	Southeast Of Saline	10,806	24%	6,502	24%	60%	1,152	44%	6,178	17%	254	22%	4,374	38%
SC	466	Scott County	13,517	27%	6,697	21%	50%	1,368	52%	5,788	8%	852	101%	6,877	41%
SG	268	Cheney	11,530	17%	6,124	20%	53%	1,185	-1%	8,253	15%	283	48%	2,994	20%
SG	264	Clearwater	11,190	30%	5,853	29%	52%	1,085	12%	7,274	30%	444	96%	3,472	23%
SG	260	Derby	10,332	28%	6,244	38%	60%	744	-2%	5,824	18%	834	12%	3,674	55%
SG	265	Goddard	11,812	45%	5,315	36%	45%	1,065	23%	7,213	36%	270	51%	4,329	63%
SG	261	Haysville	10,886	31%	5,634	33%	52%	1,001	7%	8,111	38%	766	8%	2,009	17%
State of Kansas			12,656	30%	6,824	32%	54%	1,152	18%	6,983	31%	981	9%	4,692	36%

FTE Enrollment		FTE Employment FY 2012				Unencumbered Carryover Cash (millions)				2012 State Assessment - Reading*							
FY 2012	% Chg. '05-'12	Teachers	% Chg. '05-'12	All Other	% Chg. '05-'12	Current Oper.	% Chg. '05-'12	Capital and Debt	% Chg. '05-'12	Meets Std.	Full Comp.	Meets Std.	Full Comp.	African Meets Std.	American Full Comp.	Meets Std.	Full Comp.
126	-12%	20	-6%	12	-27%	0.2	15%	0.6	366%	86%	48%	NA	NA	NA	NA	91%	50%
382	3%	31	-10%	33	16%	0.8	108%	0.9	130%	88%	60%	NA	NA	NA	NA	83%	46%
277	-22%	24	-23%	23	-48%	0.5	390%	0.8	235%	88%	61%	NA	NA	NA	NA	80%	53%
289	-5%	26	-7%	16	-9%	1.1	53%	0.8	-11%	97%	65%	NA	NA	NA	NA	97%	51%
178	-19%	18	-16%	19	-23%	0.6	93%	0.4	12%	88%	51%	NA	NA	NA	NA	85%	44%
130	-12%	17	-3%	23	30%	0.1	-52%	0.6	133%	88%	71%	NA	NA	NA	NA	78%	61%
775	-22%	74	-16%	70	-15%	2.1	149%	1.1	72%	92%	61%	92%	25%	NA	NA	87%	47%
469	4%	34	2%	29	12%	1.6	284%	0.8	19%	95%	72%	NA	NA	NA	NA	90%	58%
6,900	-3%	621	7%	835	17%	28.4	221%	14.9	44%	89%	64%	77%	42%	79%	41%	81%	48%
716	4%	50	6%	38	10%	1.2	158%	0.8	-4%	89%	67%	72%	43%	NA	NA	80%	56%
860	-2%	67	-8%	52	-38%	1.3	184%	2.0	81%	94%	67%	82%	47%	NA	NA	87%	55%
754	1%	54	4%	48	-1%	1.2	163%	1.2	22%	95%	79%	100%	79%	NA	NA	92%	70%
1,192	-4%	83	10%	88	-16%	2.6	198%	2.3	46%	93%	72%	86%	59%	NA	NA	90%	60%
6,343	-1%	468	10%	400	0%	4.8	-16%	8.4	-6%	90%	65%	77%	42%	77%	45%	81%	49%
5,048	23%	290	36%	301	47%	5.8	92%	8.8	38%	96%	79%	94%	71%	95%	80%	90%	64%
4,969	14%	331	12%	379	6%	12.1	204%	6.2	86%	90%	60%	92%	60%	77%	40%	87%	53%
456,684	3%	34,075	4%	33,785	8%	888.7	94%	830.8	37%	91%	69%	77%	45%	71%	37%	79%	47%

*KSDE does not require students to have full comprehension of grade-appropriate material to Meet Standards. Full Comprehension is considered to be Advanced and Exceeds Standard. 45

Co.	USD	District Name	FY 2012 Spending Per Pupil							FY 2012 Revenue Per Pupil					
			Total	% Chg. '05-'12	Instr.	% Chg. '05-'12	Instr. % of Total	Admin.	% Chg. '05-'12	State	% Chg. '05-'12	Federal	% Chg. '05-'12	Local	% Chg. '05-'12
SG	266	Maize	10,119	32%	5,574	20%	55%	764	19%	6,099	14%	145	31%	3,875	76%
SG	263	Mulvane	10,112	33%	5,248	28%	52%	1,278	14%	7,178	27%	632	-1%	2,302	72%
SG	267	Renwick	10,324	23%	5,329	26%	52%	804	0%	6,553	21%	201	16%	3,570	27%
SG	262	Valley Center	10,762	37%	4,995	25%	46%	1,204	51%	7,184	34%	397	108%	3,181	37%
SG	259	Wichita	12,734	35%	6,402	37%	50%	1,286	18%	7,501	42%	1,531	15%	3,702	30%
SW	483	Kismet-Plains	14,436	38%	8,225	40%	57%	1,253	40%	7,614	24%	1,014	16%	5,808	67%
SW	480	Liberal	11,029	27%	6,400	26%	58%	1,063	26%	7,420	42%	1,502	33%	2,107	-9%
SN	437	Auburn Washburn	10,699	22%	5,827	33%	54%	1,099	27%	5,467	39%	603	34%	4,629	6%
SN	345	Seaman	10,293	25%	5,570	24%	54%	873	23%	6,049	34%	608	16%	3,636	15%
SN	450	Shawnee Heights	10,508	28%	5,636	30%	54%	775	6%	6,407	29%	632	33%	3,469	26%
SN	372	Silver Lake	10,754	15%	5,873	18%	55%	986	-5%	8,185	16%	421	23%	2,148	11%
SN	501	Topeka	14,037	37%	7,218	25%	51%	1,487	43%	8,010	53%	2,121	17%	3,906	22%
SD	412	Hoxie	12,690	13%	7,003	27%	55%	1,640	-10%	6,744	1%	474	-12%	5,472	37%
SH	352	Goodland	10,879	24%	6,493	22%	60%	1,037	17%	7,087	23%	677	30%	3,115	24%
SM	237	Smith Center	13,830	28%	8,311	24%	60%	1,355	8%	8,997	30%	598	24%	4,235	24%
SF	351	Macksville	15,452	50%	7,978	37%	52%	2,008	23%	7,008	17%	728	4%	7,716	115%
State of Kansas			12,656	30%	6,824	32%	54%	1,152	18%	6,983	31%	981	9%	4,692	36%

FTE Enrollment		FTE Employment FY 2012				Unencumbered Carryover Cash (millions)				2012 State Assessment - Reading*							
FY 2012	% Chg. '05-'12	Teachers	% Chg. '05-'12	All Other	% Chg. '05-'12	Current Oper.	% Chg. '05-'12	Capital and Debt	% Chg. '05-'12	White Meets Std.	White Full Comp.	Hispanic Meets Std.	Hispanic Full Comp.	African American Meets Std.	African American Full Comp.	Low Income Meets Std.	Low Income Full Comp.
6,675	16%	354	14%	283	20%	8.2	124%	13.5	12%	95%	75%	93%	69%	83%	55%	90%	58%
1,773	-5%	128	1%	200	6%	3.3	44%	2.1	-33%	94%	72%	98%	63%	70%	30%	91%	64%
1,871	-3%	121	0%	107	13%	2.1	204%	3.6	15%	96%	76%	97%	67%	NA	NA	92%	65%
2,557	8%	132	-1%	134	38%	3.8	114%	7.0	66%	93%	72%	80%	48%	86%	54%	86%	55%
46,513	3%	3,448	11%	2,797	9%	100.8	36%	51.0	26%	82%	56%	67%	35%	63%	30%	68%	36%
685	3%	56	7%	49	5%	2.4	175%	2.2	4%	97%	73%	93%	58%	NA	NA	93%	57%
4,503	8%	324	9%	394	5%	4.6	63%	3.9	0%	92%	70%	80%	44%	70%	32%	80%	44%
5,639	13%	426	13%	441	34%	9.3	114%	5.5	1%	96%	78%	94%	69%	83%	48%	90%	59%
3,701	12%	273	6%	236	16%	4.2	134%	3.6	-5%	91%	69%	88%	55%	77%	57%	85%	53%
3,461	3%	233	1%	203	11%	5.2	125%	4.5	65%	91%	64%	80%	48%	82%	39%	82%	45%
699	-4%	53	-16%	81	41%	1.6	349%	1.3	85%	95%	77%	100%	60%	NA	NA	92%	68%
13,184	2%	1,071	1%	1,013	6%	24.6	56%	8.9	53%	78%	50%	63%	29%	60%	25%	65%	32%
320	1%	26	5%	41	12%	1.0	19%	0.7	27%	86%	60%	NA	NA	NA	NA	86%	55%
983	3%	71	-6%	109	-4%	1.2	61%	0.8	99%	90%	68%	76%	42%	NA	NA	80%	48%
403	-12%	37	-14%	28	-3%	0.8	250%	0.2	-51%	96%	72%	NA	NA	NA	NA	97%	66%
276	-4%	28	2%	28	10%	0.9	96%	0.3	-20%	91%	64%	87%	40%	NA	NA	89%	48%
456,684	3%	34,075	4%	33,785	8%	888.7	94%	830.8	37%	91%	69%	77%	45%	71%	37%	79%	47%

*KSDE does not require students to have full comprehension of grade-appropriate material to Meet Standards. Full Comprehension is considered to be Advanced and Exceeds Standard. 47

Co.	USD	District Name	FY 2012 Spending Per Pupil							FY 2012 Revenue Per Pupil					
			Total	% Chg. '05-'12	Instr.	% Chg. '05-'12	Instr. % of Total	Admin.	% Chg. '05-'12	State	% Chg. '05-'12	Federal	% Chg. '05-'12	Local	% Chg. '05-'12
SF	350	St John-Hudson	15,542	52%	8,703	54%	56%	1,660	38%	6,613	-5%	724	77%	8,205	189%
SF	349	Stafford	15,794	26%	8,653	39%	55%	2,428	33%	9,573	31%	1,433	86%	4,788	9%
ST	452	Stanton County	13,139	16%	7,384	23%	56%	1,606	14%	5,054	46%	887	31%	7,198	0%
SV	210	Hugoton	15,182	60%	6,830	30%	45%	1,345	74%	4,766	50%	905	-1%	9,511	76%
SV	209	Moscow	20,369	56%	10,094	35%	50%	2,798	26%	2,306	-43%	1,940	113%	16,123	98%
SU	359	Argonia	13,749	20%	8,601	33%	63%	1,946	2%	9,451	14%	507	-21%	3,791	49%
SU	357	Belle Plaine	12,664	22%	7,671	15%	61%	1,189	37%	9,899	19%	569	50%	2,196	31%
SU	360	Caldwell	17,420	49%	9,226	46%	53%	1,681	13%	10,480	34%	686	17%	6,254	90%
SU	356	Conway Springs	12,172	18%	5,879	20%	48%	1,193	13%	9,154	17%	425	34%	2,593	20%
SU	358	Oxford	15,166	45%	8,250	40%	54%	2,073	70%	10,350	32%	613	56%	4,203	94%
SU	509	South Haven	16,242	44%	9,347	53%	58%	1,529	22%	11,814	40%	660	18%	3,768	67%
SU	353	Wellington	11,560	19%	6,739	24%	58%	926	34%	8,240	28%	889	-7%	2,431	5%
TH	314	Brewster	21,091	54%	12,788	64%	61%	2,976	82%	11,212	27%	834	33%	9,045	111%
TH	315	Colby	11,337	30%	6,232	37%	55%	975	6%	6,790	16%	466	8%	4,081	66%
TH	316	Golden Plains	13,470	23%	8,230	28%	61%	2,138	44%	11,028	30%	986	106%	1,456	-28%
TR	208	Wakeeney	14,736	14%	7,376	14%	50%	1,400	30%	6,601	9%	583	16%	7,552	18%
State of Kansas			12,656	30%	6,824	32%	54%	1,152	18%	6,983	31%	981	9%	4,692	36%

FTE Enrollment		FTE Employment FY 2012				Unencumbered Carryover Cash (millions)				2012 State Assessment - Reading*							
FY 2012	% Chg. '05-'12	Teachers	% Chg. '05-'12	All Other	% Chg. '05-'12	Current Oper.	% Chg. '05-'12	Capital and Debt	% Chg. '05-'12	White Meets Std.	White Full Comp.	Hispanic Meets Std.	Hispanic Full Comp.	African American Meets Std.	African American Full Comp.	Low Income Meets Std.	Low Income Full Comp.
305	-24%	27	-18%	24	-26%	0.5	50%	0.6	12%	93%	71%	73%	43%	NA	NA	83%	50%
269	-14%	21	-24%	28	-1%	2.1	309%	1.7	57%	90%	70%	88%	41%	NA	NA	90%	59%
456	-2%	36	-7%	49	47%	0.9	233%	1.0	130%	85%	67%	79%	41%	NA	NA	78%	43%
1,048	2%	84	-2%	114	56%	1.5	31%	2.2	113%	90%	58%	70%	35%	NA	NA	75%	36%
187	-21%	20	-6%	18	-40%	0.4	88%	0.2	-56%	88%	43%	58%	34%	NA	NA	70%	37%
169	-20%	19	-2%	14	-12%	0.3	23%	0.5	-12%	98%	66%	NA	NA	NA	NA	100%	42%
605	-21%	49	-22%	49	-20%	0.5	622%	0.9	115%	89%	63%	90%	40%	NA	NA	85%	51%
233	-22%	19	-21%	19	-9%	0.6	87%	1.0	161%	90%	67%	NA	NA	NA	NA	89%	66%
513	-10%	35	-18%	34	0%	1.0	177%	1.4	74%	92%	63%	100%	55%	NA	NA	93%	58%
316	-22%	27	-17%	32	21%	0.5	-33%	0.5	-16%	93%	67%	NA	NA	NA	NA	90%	53%
204	-9%	20	-11%	22	36%	0.3	-2%	0.2	-61%	90%	65%	NA	NA	NA	NA	82%	45%
1,648	0%	125	1%	180	1%	1.5	83%	1.8	121%	89%	59%	79%	48%	78%	50%	84%	51%
69	-47%	14	-14%	13	-35%	0.5	72%	0.3	310%	95%	65%	NA	NA	NA	NA	82%	47%
892	-13%	58	-25%	74	-22%	3.1	892%	1.0	63%	84%	54%	68%	27%	NA	NA	75%	34%
193	1%	19	4%	20	31%	0.8	414%	0.5	31%	86%	60%	84%	37%	NA	NA	82%	48%
365	-5%	34	-7%	35	-6%	0.9	204%	1.0	42%	94%	64%	NA	NA	NA	NA	92%	60%
456,684	3%	34,075	4%	33,785	8%	888.7	94%	830.8	37%	91%	69%	77%	45%	71%	37%	79%	47%

*KSDE does not require students to have full comprehension of grade-appropriate material to Meet Standards. Full Comprehension is considered to be Advanced and Exceeds Standard. 49

Co.	USD	District Name	FY 2012 Spending Per Pupil							FY 2012 Revenue Per Pupil					
			Total	% Chg. '05-'12	Instr.	% Chg. '05-'12	Instr. % of Total	Admin.	% Chg. '05-'12	State	% Chg. '05-'12	Federal	% Chg. '05-'12	Local	% Chg. '05-'12
WB	329	Mill Creek Valley	14,587	32%	7,476	33%	51%	1,791	31%	8,100	20%	495	30%	5,992	52%
WB	330	Mission Valley	13,942	22%	6,978	21%	50%	1,435	26%	8,905	28%	829	-9%	4,208	19%
WA	241	Wallace County	13,424	12%	7,094	20%	53%	1,660	-1%	7,094	-1%	578	-9%	5,752	36%
WA	242	Weskan	16,813	40%	9,683	37%	58%	2,047	44%	10,728	30%	715	14%	5,370	73%
WS	223	Barnes	13,822	28%	8,615	34%	62%	1,201	5%	8,048	19%	572	10%	5,202	45%
WS	224	Clifton-Clyde	12,772	23%	8,177	29%	64%	1,353	34%	7,712	11%	574	7%	4,486	55%
WS	108	Washington Co.	14,075	New	8,377	New	60%	1,378	New	8,444	New	561	New	5,070	New
WH	467	Leoti	14,708	45%	7,564	43%	51%	1,481	37%	8,596	47%	860	36%	5,252	44%
WL	387	Altoona-Midway	16,987	40%	9,333	36%	55%	1,938	19%	9,464	15%	988	2%	6,535	127%
WL	484	Fredonia	12,506	34%	7,026	38%	56%	1,384	28%	8,101	24%	746	22%	3,659	66%
WL	461	Neodesha	11,884	19%	6,702	15%	56%	1,445	16%	8,675	14%	689	21%	2,520	35%
WO	366	Woodson	13,010	28%	7,520	37%	58%	1,318	52%	8,878	22%	1,009	49%	3,123	44%
WY	204	Bonner Springs	11,218	29%	5,981	26%	53%	1,028	33%	6,422	37%	709	24%	4,087	19%
WY	500	Kansas City	14,706	47%	8,514	66%	58%	1,223	8%	8,852	57%	1,806	4%	4,048	55%
WY	203	Piper-KC	12,037	41%	5,812	25%	48%	885	2%	4,330	-14%	197	67%	7,510	120%
WY	202	Turner-KC	11,426	30%	5,739	30%	50%	1,291	36%	8,281	52%	1,159	33%	1,986	-20%
State of Kansas			12,656	30%	6,824	32%	54%	1,152	18%	6,983	31%	981	9%	4,692	36%

FTE Enrollment		FTE Employment FY 2012				Unencumbered Carryover Cash (millions)				2012 State Assessment - Reading*							
FY 2012	% Chg. '05-'12	Teachers	% Chg. '05-'12	All Other	% Chg. '05-'12	Current Oper.	% Chg. '05-'12	Capital and Debt	% Chg. '05-'12	Meets Std.	Full Comp.	Meets Std.	Full Comp.	African Meets Std.	American Full Comp.	Meets Std.	Full Comp.
454	-2%	38	4%	47	45%	1.1	107%	1.6	96%	91%	66%	NA	NA	NA	NA	86%	59%
475	-4%	42	1%	52	10%	2.3	160%	2.0	214%	82%	53%	63%	44%	NA	NA	72%	39%
206	-8%	20	-20%	24	-7%	0.5	175%	1.0	121%	99%	81%	NA	NA	NA	NA	98%	71%
101	-23%	15	-1%	24	2%	0.4	313%	0.2	57%	91%	66%	100%	50%	NA	NA	93%	59%
357	-7%	37	-9%	24	-8%	0.6	15%	0.8	58%	97%	75%	56%	22%	NA	NA	88%	57%
289	-7%	27	-7%	31	17%	1.0	227%	0.5	-3%	79%	51%	NA	NA	NA	NA	73%	36%
394	New	33	New	25	New	0.7	5%	0.6	-36%	90%	61%	NA	NA	NA	NA	85%	51%
410	-15%	39	-3%	48	21%	1.4	82%	1.2	-15%	95%	76%	85%	51%	NA	NA	85%	50%
162	-30%	18	-32%	17	-8%	0.9	105%	0.6	43%	75%	43%	NA	NA	NA	NA	70%	37%
660	-11%	49	-2%	49	-1%	2.4	160%	0.8	26%	89%	57%	92%	69%	NA	NA	84%	49%
721	-1%	54	-9%	43	-8%	0.5	72%	1.0	115%	90%	65%	94%	53%	NA	NA	87%	61%
441	-12%	34	-13%	37	-5%	0.3	41%	0.2	-39%	88%	61%	NA	NA	NA	NA	87%	55%
2,426	11%	162	16%	158	-5%	3.8	179%	8.1	161%	88%	62%	81%	49%	80%	49%	80%	48%
18,952	-1%	1,478	0%	1,321	1%	49.4	97%	59.2	287%	56%	30%	52%	24%	49%	20%	50%	22%
1,723	28%	114	39%	75	32%	3.5	417%	4.0	119%	97%	82%	93%	70%	94%	67%	89%	63%
3,875	6%	250	7%	264	5%	6.2	102%	9.0	56%	77%	51%	78%	46%	66%	34%	74%	44%
456,684	3%	34,075	4%	33,785	8%	888.7	94%	830.8	37%	91%	69%	77%	45%	71%	37%	79%	47%

*KSDE does not require students to have full comprehension of grade-appropriate material to Meet Standards. Full Comprehension is considered to be Advanced and Exceeds Standard. 51

SOURCING AND NOTES

Dollar amounts and other data points on all schedules may vary slightly due to rounding.

Tables 1-3: Kansas Department of Education. *Editor's Note: Functions such as Special Education and At Risk formerly were formerly paid out of Base State Aid. Over time those and other weightings have been provided in addition to Base State Aid, rendering simple comparisons of Base State Aid invalid.*

Table 4: Kansas Division of the Budget, FY 2014 Governor's Budget Report Schedule 2.2.

Table 5: National Association of State Budget Officers, State Expenditure Report.

Table 6: National Assessment of Education Progress (NAEP), Kansas Dept. of Education, Bureau of Labor Statistics. Inflation based on Consumer Price Index, Midwest Urban Consumers, average annual index not seasonally adjusted.

Tables 7 & 8: U.S. Dept. of Education, National Center for Education Statistics; scale score range is 0 to 500. All years tested are included.

Table 9: U.S. Census Bureau and U.S. Dept. of Education, National Center for Education Statistics; current spending as reported by each state, which excludes capital and debt. Per-pupil amounts are based on fall headcounts (as opposed to FTE enrollment used for in-state reporting by KSDE). The NAEP scale score range is 0 to 500. Asterisk (*) indicates insufficient reporting data (not enough students). Sorted alphabetically by state.

Tables 10 & 11: U.S. Department of Education, National Center for Education Statistics. A 2009 state mapping study by NCES found that most states have set their cut scores for Proficient below what is considered Basic on NAEP.

Table 12: Kansas Department of Education. Total Spending as calculated by KSDE, which is the sum of State, Federal and Local Aid. Instruction and Administration spending comes from the KSDE Comparative Performance & Fiscal System and reflects current operating spending (no allocation of capital or debt). Spending categories as defined by KSDE accounting manual; total spending includes capital and debt service. FTE = full time equivalent. KSDE accounting procedures require districts that host Special

Education Co-ops to record all related expenditures of the Co-Op as expenditures of the host district; those expenditures are reimbursed by participating districts, which appears as Local Aid on the books of the host district. (KPI recommends that this procedure be changed so that expenditures are allocated appropriately to each participating district.) Unencumbered Carryover Cash balances exclude all federal funds; current operating funds include all except Capital Outlay, Debt Service and Federal. KSDE does not require students to read grade-appropriate material with full comprehension (as defined by KSDE) to qualify as Proficient / Meets Standard. KSDE considers full comprehension to be Advanced / Exceeds Standard. “NA” indicates a district does not have enough students in that cohort to meet minimum reporting criteria. “New” indicates a district that has been created since 2005. “% Chg. ‘05-‘12” reflects the percent change in the data point in the column to the left between 2005 and 2012. For instance, USD 258 has experienced a 10% change in total spending between 2005 and 2012, bringing the current total spending per-pupil to \$11,701.

“Instr. % of Total” is the amount of money spent by each school district on items, as defined by KSDE, on “Instruction.” There is a non-binding state statute saying that districts should spend 65% of their money on “Instruction,” as defined by KSDE.

“Current Oper.” in Unencumbered Carryover Cash reflects the amount of money school districts have in cash reserves that does not include funds for capital, debt, or from federal sources.



KANSAS · POLICY
INSTITUTE

www.kansaspolicy.org

WICHITA OFFICE:

250 N. Water, Suite 216 • Wichita, KS 67202
316-634-0218

OVERLAND PARK OFFICE:

12980 Metcalf, Suite 430 • Overland Park, KS 66213
913-213-5038

©Kansas Policy Institute, 2013