

# 2016 Public Education



Spending, taxpayer aid, student achievement and other data for every public school district in Kansas.



# FACT BOOK

[WWW.KANSASPOLICY.ORG](http://WWW.KANSASPOLICY.ORG) | [WWW.KANSASOPENGOV.ORG](http://WWW.KANSASOPENGOV.ORG)



Kansas Policy Institute is an independent non-profit organization that advocates for free markets and the protection of personal freedom.

Our work is focused on state and local issues with particular emphasis on economic freedom and educational freedom.

### **Guarantee of Quality Scholarship**

Kansas Policy Institute is committed to delivering the highest quality and most reliable research on state and local issues in Kansas.

KPI guarantees that all original factual data are true and correct and that information attributed to other sources is accurately represented.

## INTRODUCTION

Aside from ACT scores, the data in this Fact Book all come from official government sources, including local school districts, the Kansas Department of Education (KSDE) and the U.S. Department of Education. All data is the most current available and, unless otherwise noted, is through 2014-2015 academic year. Additional information (including annual historical data) for individual school districts is available on our transparency site, [KansasOpenGov.org](http://KansasOpenGov.org) and on the KSDE site at [ksde.org](http://ksde.org).

We compiled this Fact Book because scientific surveys show that citizens are grossly misinformed on many pertinent facts of public education in Kansas. Aid and spending per-pupil are much higher than many Kansans believe, and student achievement is lower than understood.

Many Kansas students are doing quite well but thousands of students each year are falling behind, and a false sense of high achievement is a tremendous barrier to getting them the help they need.

State assessment results from 2015 show that only 40% of Kansas 10th graders who are designated “not low-income” are on track to be college and career-ready in English Language Arts, and only 17% of “low income” students. In Mathematics,

only 32% of “not low-income” 10th graders are on track to be college and career-ready, and just 11% of “low income” students.

It may be intuitive to think that more spending is needed to close achievement gaps but as shown in Table 10, student achievement on independent tests remains unchanged despite billions more in taxpayer support.

Table 17 illustrates that many states get the same or better results while spending less than others. Wisconsin, for example, spends considerably more than Kansas but student scores are most often lower than Kansas. Florida, on the other hand, spends considerably less per-pupil than Kansas but gets slightly better results with most cohorts. At the very least, this indicates that it’s not how much is spent that matters; it’s how the money is spent.

Kansas taxpayers are investing a lot of money into public education. Indeed, Table 1 shows that taxpayer support of public education in Kansas set a new record in 2015, at \$6.08 billion. And the KSDE estimates that 2016 will set another record at \$6.14 billion or \$13,200 per-pupil.

Accurate information is necessary for good decision-making.

We hope you find this Fact Book useful as you reach your own informed decisions regarding public education in Kansas.

**Table 1: State, Federal and Local Taxpayer Support** (*millions of dollars*)

School Year	State	Federal	Local	Total
1997-98	1,815.7	189.1	1,058.4	3,063.2
1998-99	2,035.2	202.6	1,004.7	3,242.5
1999-00	2,110.5	220.8	1,071.4	3,402.7
2000-01	2,152.6	261.0	1,172.9	3,586.6
2001-02	2,200.5	310.1	1,269.9	3,780.6
2002-03	2,277.8	340.7	1,335.2	3,953.7
2003-04	2,124.6	376.9	1,589.6	4,094.1
2004-05	2,362.2	398.7	1,526.0	4,289.4
2005-06	2,658.0	382.8	1,650.9	4,689.3
2006-07	2,889.0	385.4	1,869.0	5,142.1
2007-08	3,131.5	377.0	1,940.1	5,446.5
2008-09	3,287.2	413.6	1,965.6	5,666.7
2009-10	2,867.8	726.6	1,997.2	5,589.5
2010-11	2,961.8	666.6	1,958.7	5,587.0
2011-12	3,184.2	447.4	2,139.4	5,771.0
2012-13	3,198.1	460.3	2,194.1	5,852.5
2013-14	3,268.0	485.6	2,222.0	5,975.5
2014-15	3,968.9	510.2	1,607.0	6,080.0
2015-16 (est.)	4,000.0	520.0	1,620.8	6,140.8

Source: Kansas Department of Education

**Table 2: State, Federal and Local Taxpayer Support** (*per pupil, full time equivalent enrollment*)

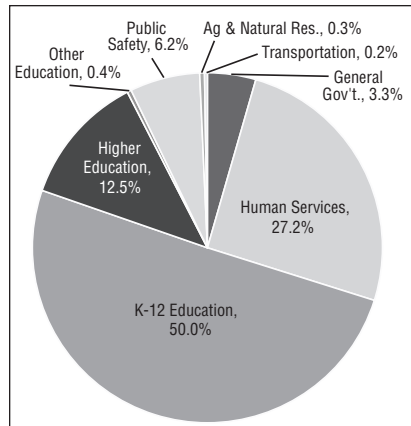
School Year	State	Federal	Local	Total
1997-98	4,047	422	2,359	6,828
1998-99	4,533	451	2,238	7,223
1999-00	4,704	492	2,388	7,585
2000-01	4,816	584	2,624	8,024
2001-02	4,941	696	2,851	8,488
2002-03	5,124	766	3,004	8,894
2003-04	4,793	850	3,586	9,235
2004-05	5,346	902	3,454	9,707
2005-06	6,006	865	3,730	10,596
2006-07	6,494	866	4,201	11,558
2007-08	7,008	844	4,341	12,188
2008-09	7,344	924	4,391	12,660
2009-10	6,326	1,603	4,406	12,330
2010-11	6,511	1,465	4,306	12,283
2011-12	6,983	981	4,692	12,656
2012-13	6,984	1,005	4,792	12,781
2013-14	7,088	1,053	4,819	12,960
2014-15	8,567	1,101	3,469	13,124
2015-16 (est.)	8,598	1,118	3,484	13,200

Source: Kansas Department of Education

**Table 3: Components of Per-Pupil Aid***(per pupil, KPERs-adjusted)*

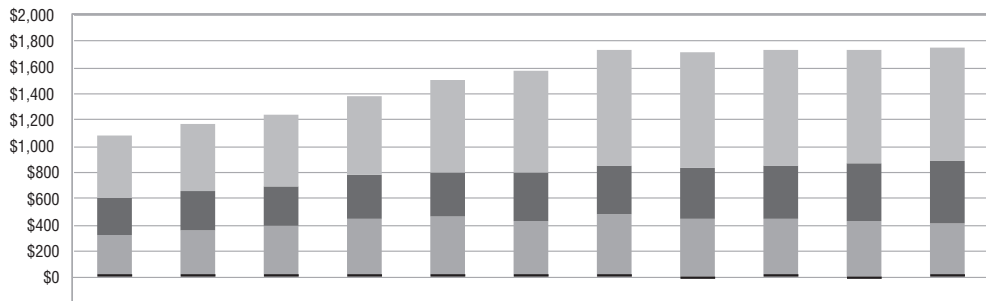
School Year	KPERs	Bond & Interest	All Other Aid	Total
1997-98	157	42	6,786	6,985
1998-99	173	50	7,173	7,396
1999-00	182	58	7,527	7,767
2000-01	184	69	7,955	8,208
2001-02	205	90	8,399	8,694
2002-03	234	106	8,788	9,128
2003-04	250	113	9,122	9,485
2004-05	274	118	9,315	9,707
2005-06	320	130	10,146	10,596
2006-07	379	144	11,035	11,558
2007-08	434	156	11,599	12,188
2008-09	477	170	12,013	12,660
2009-10	477	194	11,659	12,330
2010-11	409	212	11,661	12,283
2011-12	797	230	11,628	12,656
2012-13	609	242	11,930	12,781
2013-14	677	281	12,001	12,960
2014-15	654	313	12,157	13,124
98-'15 chg.	317%	640%	79%	88%

Source: Kansas Dept. of Education; Inflation (BLS, Midwest Urban Cities) increased 42% over the same time period.

**Table 4: General Fund Allocations***(FY 2015 Actual)*

Source: Kansas Division of the Budget, FY 2017 Comparison Report Schedule 2.2

**Table 5: School District Carryover Cash by Category (in millions)**



	2005	2006	2007	2008	2009	2010	2011	2012	2013	2014	2015
<b>Operating</b>	468.1	500.0	547.2	601.6	705.1	780.2	878.8	891.7	888.2	860.9	853.1
<b>Debt</b>	283.6	299.2	307.4	320.5	344.3	361.9	368.4	377.7	403.7	434.9	475.8
<b>Capital</b>	321.0	364.2	384.0	449.3	451.7	429.8	472.7	453.2	446.1	432.1	411.6
<b>Federal</b>	5.8	0.2	2.7	3.7	3.8	1.1	6.5	(1.8)	2.8	(14.2)	5.1

■ Federal   ■ Capital   ■ Debt   ■ Operating

**Table 6: Carryover Ratios**

<b>Statewide Carryover Ratios</b>										
Measurement	2006	2007	2008	2009	2010	2011	2012	2013	2014	2015
Lowest	0.5%	-2.3%	0.7%	-0.8%	0.7%	1.1%	2.2%	3.2%	2.5%	1.9%
Median	9.1%	8.9%	9.0%	9.8%	13.4%	15.6%	16.6%	16.0%	15.6%	14.9%
Statewide Average	11.4%	11.2%	11.4%	12.1%	14.6%	16.1%	17.6%	17.6%	17.0%	16.6%
Highest	36.1%	49.1%	55.2%	68.5%	68.7%	64.9%	62.4%	74.6%	65.5%	76.0%
<b>Carryover Ratio Distribution of Existing School Districts</b>										
Current Ratio	2006	2007	2008	2009	2010	2011	2012	2013	2014	2015
Less than 5%	42	51	44	39	16	12	9	6	9	8
5% to 10%	121	117	116	107	70	51	33	34	44	56
10% to 15%	74	72	76	80	86	72	79	89	83	80
15% to 20%	30	23	28	31	66	71	70	62	58	59
More than 20%	10	15	16	23	44	79	95	95	92	83
<b>Total</b>	<b>277</b>	<b>278</b>	<b>280</b>	<b>280</b>	<b>282</b>	<b>285</b>	<b>286</b>	<b>286</b>	<b>286</b>	<b>286</b>

Source: KSDE. Carryover ratio is the amount of carryover cash reserves in current operating funds at the beginning of a school year as a percentage of current operating spending for the school year. Current operating funds exclude federal, capital outlay and debt service. School districts that consolidated and no longer exist are reflected in the statewide average but are otherwise excluded in this analysis.

## Table 7: General Fund Allocation to K-12 Education

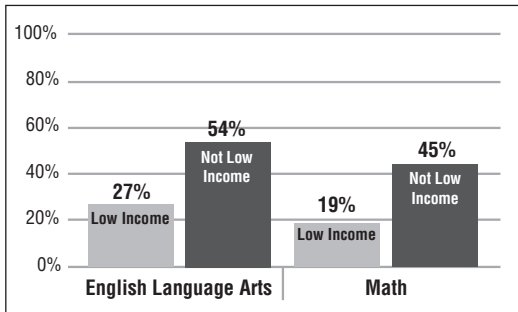
(FY 2015 Budget)

Alabama . . . . .52.4%	Wisconsin . . . . .41.0%	Maine . . . . .35.9%	Rhode Island . . .29.2%
<b>Kansas . . . . .50.7%</b>	Nevada . . . . .40.7%	Missouri . . . . .35.8%	Vermont . . . . .27.4%
Indiana . . . . .50.2%	Georgia . . . . .40.7%	Montana . . . . .35.5%	North Dakota . .27.3%
Idaho . . . . .48.0%	Louisiana . . . . .40.4%	Pennsylvania . .35.3%	Alaska . . . . .24.9%
Utah . . . . .47.9%	Minnesota . . . .40.2%	Colorado . . . . .35.2%	Ohio . . . . .24.7%
West Virginia . .46.4%	California . . . .40.1%	<b>Average . . . . .35.2%</b>	Hawaii . . . . .24.7%
Washington . . .46.0%	Texas . . . . .39.7%	Delaware . . . . .33.4%	Illinois . . . . .22.7%
Kentucky . . . . .45.2%	Mississippi . . .39.1%	Tennessee . . . .33.0%	Connecticut . . .18.8%
New Mexico . . .44.1%	North Carolina .38.9%	New York . . . . .32.7%	Massachusetts .16.5%
Arkansas . . . . .43.1%	New Jersey . . .37.4%	Virginia . . . . .30.8%	Michigan . . . . .0.8%
Iowa . . . . .43.0%	South Carolina .37.0%	Oklahoma . . . .30.5%	Wyoming . . . . .0.0%
Oregon . . . . .42.8%	Maryland . . . .36.7%	Nebraska . . . . .30.0%	New Hampshire .0.0%
Arizona . . . . .41.1%	Florida . . . . .36.4%	South Dakota . .29.4%	

Source: National Association of State Budget Officers, State Expenditure Report

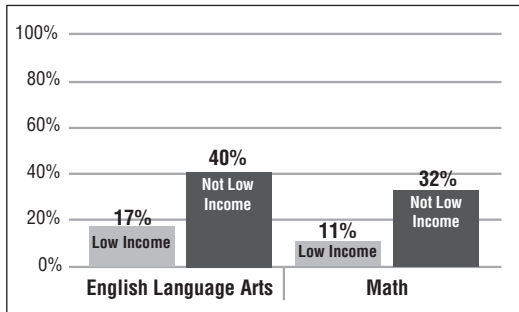


**Table 8: 2015 State Assessment Results – All Students**  
**% On Track to be College and Career Ready**

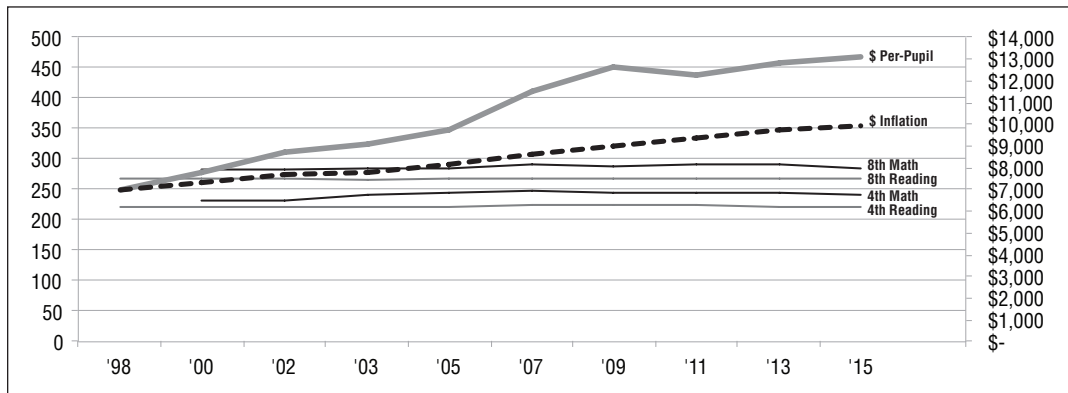


Source: Kansas Department of Education

**Table 9: 2015 State Assessment Results – 10th Grade Students**  
**% On Track to be College and Career Ready**



## Table 10: Kansas NAEP Scale Scores and Spending Per-Pupil



Source: National Assessment of Education Progress (NAEP), Kansas Dept. of Education, Bureau of Labor Statistics (Midwest Urban Cities, fiscal basis). Kansas began participating in NAEP in 1998, which is now given biannually. Pre-2005 spending adjusted upward for KPERS.

**Table 11: Kansas National Rank  
2015 NAEP**

<b>Proficiency Ranking</b>				
Student Group	4th Grade Reading	8th Grade Reading	4th Grade Math	8th Grade Math
Low Income	#36	#21	#16	#25
Not Low Income	#15	#22	#17	#25
<b>Percent Proficient</b>				
Student Group	4th Grade Reading	8th Grade Reading	4th Grade Math	8th Grade Math
Kansas Low Income	20%	22%	27%	19%
U.S. Low Income	21%	20%	24%	18%
Kansas Not Low Income	54%	47%	58%	46%
U.S. Not Low Income	52%	47%	58%	48%

Source: National Assessment of Educational Progress

**Table 12: Kansas National Rank  
2015 ACT – Composite Score**

Year	White	Hispanic	African American	State Avg.
2002	22.0	19.2	17.4	21.6
2003	21.9	19.3	17.6	21.5
2004	22.0	19.4	17.6	21.6
2005	22.1	19.1	17.4	21.7
2006	22.2	19.3	17.4	21.8
2007	22.3	19.3	17.7	21.9
2008	22.5	19.4	17.9	22.0
2009	22.5	19.4	17.8	21.9
2010	22.6	19.2	17.7	22.0
2011	22.6	19.4	17.7	22.0
2012	22.6	19.5	17.6	21.9
2013	22.6	19.3	17.5	21.8
2014	22.8	19.2	17.7	22.0
2015	22.8	19.2	17.6	21.9
<b>2015 Rank</b>	<b>#24</b>	<b>#26</b>	<b>#22</b>	<b>#21</b>

**Table 13: Years to Close Achievement Gaps**

<b>NAEP Scale Scores</b>			Average Annual Change	Target: Not Low Income 2015	Years to Catch up
Grade Level / Subject	2005	2015			
4th grade Reading - Low Income	208	208	0	238	Never
4th grade Math - Low Income	235	231	-0.4	253	Never
8th grade Reading - Low Income	254	256	0.2	277	105
8th grade Math - Low Income	270	272	0.2	295	115

Source: U.S. Department of Education, National Center for Education Statistics

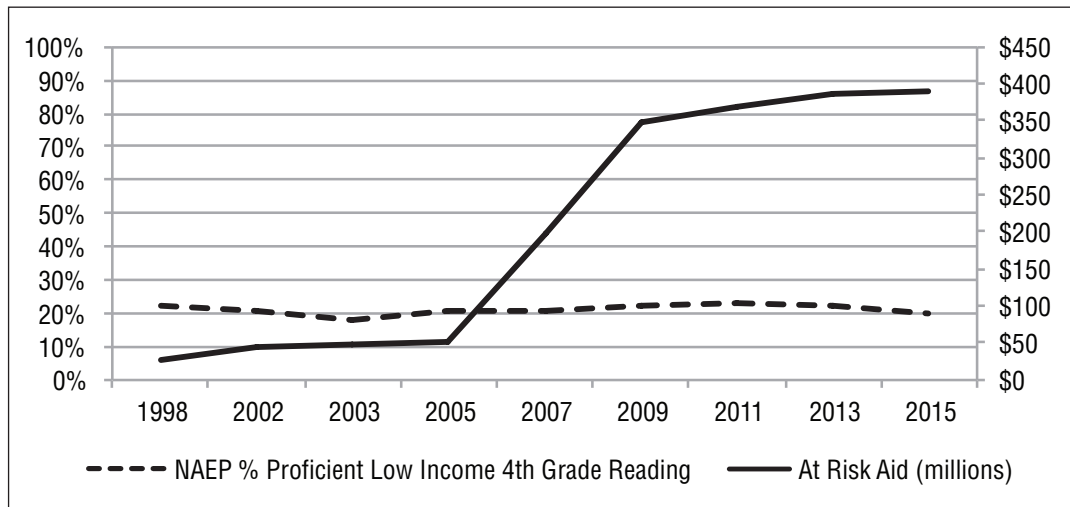
<b>NAEP Percent Proficient</b>			Average Annual Change	Target: Not Low Income 2015	Years to Catch up
Grade Level / Subject	2005	2015			
4th grade Reading - Low Income	20%	20%	0.0%	54%	Never
4th grade Math - Low Income	30%	27%	-0.3%	58%	Never
8th grade Reading - Low Income	21%	22%	0.1%	47%	250
8th grade Math - Low Income	19%	19%	0.0%	46%	Never

Source: U.S. Department of Education, National Center for Education Statistics

<b>ACT Scores</b>			Average Annual Change	Target: White 2015	Years to Catch up
Student Group	2005	2015			
Hispanic	19.1	19.2	0.01	22.8	360
African American	17.4	17.6	0.02	22.8	260

Source: ACT; breakouts by income level not published

**Table 14: At Risk Aid and Low Income Achievement**



**Table 15: Kansas Performance on the NAEP – Reading**

	Year	Low Income		Not Low Income	
		Scale Score	% Prof.	Scale Score	% Prof.
<b>4th Grade Reading</b>	1998	206	22%	229	39%
	2002	211	21%	230	43%
	2003	206	18%	230	42%
	2005	208	20%	230	42%
	2007	212	21%	233	46%
	2009	213	22%	234	47%
	2011	212	23%	236	50%
	2013	210	22%	238	54%
	2015	208	20%	238	54%
<b>8th Grade Reading</b>	1998	254	21%	275	43%
	2002	251	19%	276	45%
	2003	253	22%	273	42%
	2005	254	21%	275	43%
	2007	253	20%	275	44%
	2009	255	19%	275	43%
	2011	256	22%	276	46%
	2013	254	22%	278	48%
	2015	256	22%	278	47%

Source: USDE, National Center for Education Statistics; scale score range is 0 to 500

**Table 16: Kansas Performance on the NAEP – Math**

	Year	Low Income		Not Low Income	
		Scale Score	% Prof.	Scale Score	% Prof.
<b>4th Grade Math</b>	2000	218	13%	240	38%
	2003	231	24%	249	53%
	2005	235	30%	254	59%
	2007	237	34%	255	63%
	2009	236	32%	254	60%
	2011	238	33%	255	63%
<b>8th Grade Math</b>	2013	237	33%	256	63%
	2015	231	27%	253	58%
	2000	265	17%	289	39%
	2003	270	19%	291	41%
	2005	270	19%	293	43%
	2007	275	23%	299	50%
2009	276	24%	298	51%	
2011	276	24%	300	54%	
2013	276	24%	301	54%	
2015	272	19%	295	46%	

Source: USDE, National Center for Education Statistics; scale score range is 0 to 500

## Table 17: State Spending and Achievement

State	2013 Current Spending Per-pupil	2015 NAEP – 4th Grade Reading				2015 NAEP – 8th Grade Reading				2015 NAEP – 4th Grade Math				2015 NAEP – 8th Grade Math			
		Low Income Scale Score	% Prof.	Not Low Income Scale Score	% Prof.	Low Income Scale Score	% Prof.	Not Low Income Scale Score	% Prof.	Low Income Scale Score	% Prof.	Not Low Income Scale Score	% Prof.	Low Income Scale Score	% Prof.	Not Low Income Scale Score	% Prof.
Alabama	\$8,755	208	19	232	45	250	17	270	37	223	15	244	43	254	7	282	29
Alaska	\$18,175	197	17	229	43	245	17	274	44	225	21	248	50	266	18	294	45
Arizona	\$7,208	203	17	236	52	254	21	274	43	228	25	252	58	273	23	296	50
Arkansas	\$9,394	211	24	233	48	250	17	273	42	230	25	246	46	266	16	289	38
California	\$9,220	201	16	233	48	249	18	273	43	221	16	249	51	264	16	293	45
Colorado	\$8,647	208	21	238	54	253	20	280	52	228	25	254	59	268	19	300	52
Connecticut	\$16,631	209	20	240	57	256	23	282	54	223	17	251	55	261	13	296	48
Delaware	\$13,833	210	21	232	48	253	19	269	39	229	23	245	46	267	16	289	39
Florida	\$8,433	220	29	239	55	257	22	275	45	235	31	254	60	266	16	292	44
Georgia	\$9,099	214	23	239	55	253	20	277	46	228	23	252	56	267	15	299	52
Hawaii	\$11,823	203	17	230	43	247	16	268	35	229	26	249	53	269	20	290	41
Idaho	\$6,791	211	24	233	49	259	27	276	46	230	26	249	52	272	21	293	45
Illinois	\$12,288	208	20	239	55	256	22	279	49	225	21	252	56	269	18	296	47
Indiana	\$9,566	217	28	238	52	257	23	280	51	239	36	258	65	274	24	298	51
Iowa	\$10,313	210	23	234	49	256	22	276	44	231	27	252	57	270	20	296	47
<b>Kansas</b>	<b>\$9,828</b>	<b>208</b>	<b>20%</b>	<b>238</b>	<b>54%</b>	<b>256</b>	<b>22%</b>	<b>277</b>	<b>47%</b>	<b>231</b>	<b>27%</b>	<b>253</b>	<b>58%</b>	<b>272</b>	<b>19%</b>	<b>295</b>	<b>46%</b>
<b>U.S. Average</b>		<b>209</b>	<b>21%</b>	<b>237</b>	<b>52%</b>	<b>253</b>	<b>20%</b>	<b>276</b>	<b>47%</b>	<b>229</b>	<b>24%</b>	<b>253</b>	<b>58%</b>	<b>268</b>	<b>18%</b>	<b>296</b>	<b>48%</b>

State	2013 Current Spending Per-pupil	2015 NAEP – 4th Grade Reading				2015 NAEP – 8th Grade Reading				2015 NAEP – 4th Grade Math				2015 NAEP – 8th Grade Math			
		Low Income		Not Low Income		Low Income		Not Low Income		Low Income		Not Low Income		Low Income		Not Low Income	
		Scale Score	% Prof.	Scale Score	% Prof.	Scale Score	% Prof.	Scale Score	% Prof.	Scale Score	% Prof.	Scale Score	% Prof.	Scale Score	% Prof.	Scale Score	% Prof.
Kentucky	\$9,316	219	29	241	57	259	26	279	49	234	29	255	59	268	17	291	41
Louisiana	\$10,490	209	21	231	44	249	16	267	36	228	21	247	49	260	10	284	33
Maine	\$12,147	214	23	234	48	260	24	275	44	233	27	251	55	272	23	294	45
Maryland	\$13,829	207	18	237	52	252	19	279	51	225	21	253	57	264	15	296	48
Massachusetts	\$14,515	220	29	247	65	260	28	286	59	236	31	261	71	279	31	311	66
Michigan	\$10,948	204	16	228	40	252	18	275	43	223	17	247	49	263	14	290	41
Minnesota	\$11,089	205	20	236	52	255	22	279	49	234	33	260	67	275	27	305	59
Mississippi	\$8,130	207	19	233	45	245	13	270	39	229	21	250	52	262	14	291	42
Missouri	\$9,597	211	25	236	50	255	22	278	49	230	26	250	53	266	16	293	45
Montana	\$10,625	213	24	235	49	259	23	279	47	231	27	250	53	276	26	296	48
Nebraska	\$11,579	213	23	239	55	256	22	279	50	231	27	254	61	270	20	298	50
Nevada	\$8,339	205	20	227	42	250	17	270	39	226	21	246	49	265	15	287	39
New Hampshire	\$13,721	216	26	238	54	260	27	280	51	236	31	255	60	275	25	300	53
New Jersey	\$17,572	213	21	240	57	252	19	280	51	230	25	256	62	270	22	305	58
New Mexico	\$9,012	201	17	226	40	247	14	266	33	226	20	245	46	265	14	287	38
New York	\$19,818	211	21	238	53	254	22	275	46	228	23	248	51	271	21	292	44
North Carolina	\$8,390	215	25	242	59	249	18	277	48	234	30	258	67	268	19	299	52
<b>Kansas</b>	<b>\$9,828</b>	<b>208</b>	<b>20%</b>	<b>238</b>	<b>54%</b>	<b>256</b>	<b>22%</b>	<b>277</b>	<b>47%</b>	<b>231</b>	<b>27%</b>	<b>253</b>	<b>58%</b>	<b>272</b>	<b>19%</b>	<b>295</b>	<b>46%</b>
<b>U.S. Average</b>		<b>209</b>	<b>21%</b>	<b>237</b>	<b>52%</b>	<b>253</b>	<b>20%</b>	<b>276</b>	<b>47%</b>	<b>229</b>	<b>24%</b>	<b>253</b>	<b>58%</b>	<b>268</b>	<b>18%</b>	<b>296</b>	<b>48%</b>

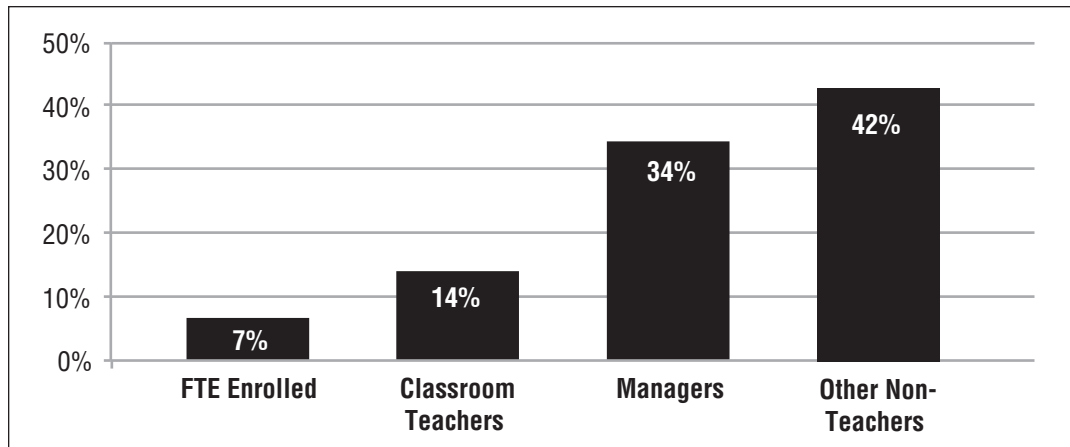


State	2013 Current Spending Per-pupil	2015 NAEP – 4th Grade Reading				2015 NAEP – 8th Grade Reading				2015 NAEP – 4th Grade Math				2015 NAEP – 8th Grade Math			
		Low Income Scale Score	% Prof.	Not Low Income Scale Score	% Prof.	Low Income Scale Score	% Prof.	Not Low Income Scale Score	% Prof.	Low Income Scale Score	% Prof.	Not Low Income Scale Score	% Prof.	Low Income Scale Score	% Prof.	Not Low Income Scale Score	% Prof.
North Dakota	\$11,980	212	23	231	44	254	18	272	40	232	26	251	54	271	22	296	47
Ohio	\$11,197	212	23	238	52	252	20	279	50	230	24	257	64	270	20	299	49
Oklahoma	\$7,672	214	23	234	48	255	21	272	40	232	25	252	56	265	13	287	35
Oregon	\$9,543	210	23	237	52	258	24	279	49	230	27	250	54	271	21	297	50
Pennsylvania	\$13,864	211	24	239	55	253	20	282	55	229	24	254	61	267	18	299	52
Rhode Island	\$14,415	211	24	238	54	250	19	277	48	226	21	249	52	267	15	294	46
South Carolina	\$9,514	206	21	237	53	250	17	274	43	229	24	252	57	264	14	291	41
South Dakota	\$8,470	205	20	232	45	256	23	274	41	229	25	248	51	271	19	293	42
Tennessee	\$8,208	207	22	235	50	254	20	278	48	232	27	252	58	266	17	292	44
Texas	\$8,299	208	20	235	49	252	18	272	40	235	30	260	68	274	20	296	47
Utah	\$6,555	213	27	234	48	256	22	277	47	231	28	249	52	271	22	294	46
Vermont	\$16,377	217	30	239	55	261	29	282	53	232	27	252	55	278	27	299	52
Virginia	\$10,960	210	22	242	58	250	17	278	48	233	27	256	62	270	17	299	50
Washington	\$9,672	210	23	242	58	254	22	281	52	232	29	259	66	272	24	301	55
West Virginia	\$11,132	211	25	231	44	256	22	268	36	230	26	249	50	265	15	283	31
Wisconsin	\$11,071	207	19	236	50	253	21	278	47	229	26	254	60	269	19	300	52
Wyoming	\$15,700	217	28	235	49	257	22	276	44	237	34	253	58	274	20	294	44
<b>Kansas</b>	<b>\$9,828</b>	<b>208</b>	<b>20%</b>	<b>238</b>	<b>54%</b>	<b>256</b>	<b>22%</b>	<b>277</b>	<b>47%</b>	<b>231</b>	<b>27%</b>	<b>253</b>	<b>58%</b>	<b>272</b>	<b>19%</b>	<b>295</b>	<b>46%</b>
<b>U.S. Average</b>		<b>209</b>	<b>21%</b>	<b>237</b>	<b>52%</b>	<b>253</b>	<b>20%</b>	<b>276</b>	<b>47%</b>	<b>229</b>	<b>24%</b>	<b>253</b>	<b>58%</b>	<b>268</b>	<b>18%</b>	<b>296</b>	<b>48%</b>

## Table 18: District Employment Categories

	FTE Employed			Percentage Change		
	1993	2005	2015	1993-2005	2005-2015	1993-2015
Pre-K teachers	125.5	380.4	598.6	203.1%	57.4%	377.0%
Kindergarten	1,030.0	1,325.7	1,835.1	28.7%	38.4%	78.2%
Vocational Ed	935.3	1,144.4	1,453.5	22.4%	27.0%	55.4%
All other	24,280.5	25,743.0	26,262.7	6.0%	2.0%	8.2%
Classroom teachers	26,371.3	28,593.5	30,149.9	8.4%	5.4%	14.3%
Special Ed	2,856.4	3,542.6	3,949.3	24.0%	11.5%	38.3%
Reading Specialists	524.9	688.5	718.1	31.2%	4.3%	36.8%
Total teachers	29,752.6	32,824.6	34,817.3	10.3%	6.1%	17.0%
Special Ed paras	2,150.2	4,730.7	6,189.9	120.0%	30.8%	187.9%
Teacher aides	1,565.5	2,377.4	2,949.3	51.9%	24.1%	88.4%
Management	3,195.0	3,878.2	4,291.2	21.4%	10.6%	34.3%
Maint/Trans/Food	8,708.0	9,764.7	9,694.5	12.1%	-0.7%	11.3%
Clerical	3,642.3	4,149.5	3,866.0	13.9%	-6.8%	6.1%
All other	5,170.2	6,281.9	7,361.8	21.5%	17.2%	42.4%
Total employment	54,183.8	64,007.0	69,170.0	18.1%	8.1%	27.7%
FTE enrolled	431,320.5	441,867.6	463,266.4	2.4%	4.8%	7.4%
Pupil / Classroom teacher ratio	16.4	15.5	15.4			
Pupil / Employee ratio	8.0	6.9	6.7			

**Table 19: Enrollment and Employment Change 1993 - 2015**



## Table 20: District-Level Information

Co.	USD	District Name	FY 2015 Spending Per Pupil							FY 2015 Aid Per Pupil					
			Total	% Chg. '05-'15	Instr.	% Chg. '05-'15	Instr. % of Total	Admin.	% Chg. '05-'15	State	% Chg. '05-'15	Federal	% Chg. '05-'15	Local	% Chg. '05-'15
AL	258	Humboldt	11,536	9%	6,466	4%	56%	1,611	10%	9,257	26%	588	-37%	1,691	-27%
AL	257	Iola	12,315	32%	7,621	38%	62%	1,306	47%	9,468	44%	976	17%	1,871	-1%
AL	256	Marmaton Valley	15,197	44%	9,356	58%	62%	1,478	41%	11,248	51%	968	-5%	2,991	45%
AN	479	Crest	13,640	12%	8,726	52%	64%	1,558	35%	11,403	41%	697	6%	1,540	-55%
AN	365	Garnett	13,411	44%	7,078	37%	53%	1,119	22%	9,024	54%	654	-1%	3,732	32%
AT	409	Atchison	12,182	7%	6,699	11%	55%	1,180	-10%	9,075	59%	1,196	-19%	1,911	-54%
AT	377	Atchison County	14,993	67%	7,732	49%	52%	1,457	67%	9,803	52%	729	58%	4,460	118%
BA	254	Barber Co. North	13,338	32%	7,936	49%	59%	1,281	39%	8,418	40%	502	27%	4,417	20%
BA	255	South Barber	21,226	89%	8,237	29%	39%	1,940	32%	9,617	46%	570	-22%	11,039	183%
BT	355	Ellinwood	15,857	56%	7,880	44%	50%	1,387	-12%	8,604	22%	701	47%	6,552	148%
BT	428	Great Bend	13,161	45%	8,735	63%	66%	1,213	46%	8,567	58%	1,269	-5%	3,324	15%
BT	431	Hoisington	12,694	6%	7,127	19%	56%	1,125	4%	9,112	21%	593	-7%	3,167	-16%
BB	234	Fort Scott	10,962	38%	6,621	37%	60%	1,002	43%	8,448	56%	1,190	76%	1,324	-21%
BB	235	Uniontown	13,348	24%	8,100	31%	61%	1,106	8%	11,261	37%	817	29%	1,270	-34%
State of Kansas			13,088	35%	6,925	34%	53%	1,182	21%	8,567	60%	1,101	22%	3,469	0%

FTE Enrollment		FTE Employment FY 2015				Unencumbered Carryover Cash		2015 State Assessment 10th Grade (% on track to be college-ready)				ACT District-Wide Composite Score All Students
FY 2015	% Chg. '05-'15	Teachers	% Chg. '05-'15	Non- Teachers	% Chg. '05-'15	Current Oper. (millions)	% Chg. '05-'15	Math		English/Language Arts		
								Low Income	Not Low Inc.	Low Income	Not Low Inc.	
764	46%	41	-2%	44	19%	0.6	154%	9.5	10.0	19.0	35.0	20.0
1,263	-12%	86	-13%	100	-18%	1.7	110%	11.6	21.9	16.3	43.8	22.2
277	-26%	26	-5%	38	24%	0.3	-49%	27.3	18.2	18.2	54.5	22.8
198	-16%	20	-3%	17	-2%	0.3	51%	0.0	0.0	0.0	0.0	18.5
1,022	-6%	79	-3%	55	8%	2.2	89%	13.2	11.1	15.8	27.8	20.2
1,583	1%	104	16%	121	14%	3.7	141%	13.5	19.6	21.2	32.1	20.6
580	-22%	41	-23%	46	0%	0.9	35%	11.1	21.4	11.1	21.4	18.8
441	-25%	35	-26%	39	7%	1.5	98%	0.0	11.8	0.0	23.5	19.7
225	-15%	25	14%	47	107%	0.5	150%	0.0	21.4	0.0	35.7	20.0
414	-19%	31	-16%	36	-8%	1.1	107%	16.7	6.7	22.2	13.3	20.8
3,019	-1%	182	-1%	249	7%	11.3	67%	10.6	18.8	11.4	29.2	21.1
694	13%	50	-2%	46	-19%	1.1	282%	26.1	36.4	17.4	33.3	19.2
1,819	-7%	131	-2%	132	11%	2.7	125%	0.0	19.0	0.0	14.7	21.7
435	1%	35	-13%	27	-10%	1.0	434%	33.3	50.0	31.6	43.8	22.2
463,266	5%	30,150	5%	34,353	10%	853.1	82%	11%	32%	17%	40%	21.9

Co.	USD	District Name	FY 2015 Spending Per Pupil							FY 2015 Aid Per Pupil					
			Total	% Chg. '05-'15	Instr.	% Chg. '05-'15	Instr. % of Total	Admin.	% Chg. '05-'15	State	% Chg. '05-'15	Federal	% Chg. '05-'15	Local	% Chg. '05-'15
BR	415	Hiawatha	12,884	22%	7,040	16%	55%	1,368	35%	8,364	25%	768	13%	3,752	16%
BR	430	South Brown Co.	15,135	43%	9,055	63%	60%	1,724	78%	11,708	50%	1,339	30%	2,117	21%
BU	385	Andover	10,499	28%	5,347	30%	51%	1,015	18%	7,526	52%	159	14%	2,814	-10%
BU	402	Augusta	10,516	34%	5,631	34%	54%	1,079	20%	8,316	51%	408	17%	1,793	-10%
BU	205	Bluestem	14,500	41%	7,461	44%	51%	1,544	11%	10,305	40%	501	61%	3,788	43%
BU	375	Circle	11,613	25%	5,597	24%	48%	825	9%	6,412	48%	351	10%	4,850	5%
BU	396	Douglass	12,279	24%	6,690	35%	54%	1,227	41%	10,023	32%	399	43%	1,871	-9%
BU	490	El Dorado	14,751	13%	7,902	-6%	54%	936	16%	7,819	54%	576	-73%	6,356	9%
BU	492	Flinthills	15,534	35%	8,284	40%	53%	1,604	39%	10,625	43%	381	-11%	4,528	25%
BU	206	Rem.-Whitewater	14,147	27%	8,198	52%	58%	1,505	59%	9,487	42%	434	61%	4,510	68%
BU	394	Rose Hill	10,769	31%	5,669	38%	53%	892	30%	8,365	38%	289	59%	2,115	8%
CS	284	Chase County	14,189	32%	7,970	37%	56%	1,203	31%	9,096	52%	494	-5%	4,599	8%
CQ	285	Cedar Vale	12,589	6%	8,106	17%	64%	1,405	-36%	11,470	31%	963	-3%	156	-95%
CQ	286	Chautauqua Co.	13,554	43%	8,222	34%	61%	1,414	79%	10,347	44%	1,158	45%	2,083	35%
CK	508	Baxter Springs	12,856	42%	7,094	46%	55%	1,378	-19%	10,084	46%	771	27%	2,001	33%
CK	493	Columbus	12,559	24%	7,448	42%	59%	1,633	64%	9,432	54%	707	18%	2,419	-29%
State of Kansas			13,088	35%	6,925	34%	53%	1,182	21%	8,567	60%	1,101	22%	3,469	0%

FTE Enrollment		FTE Employment FY 2015				Unencumbered Carryover Cash		2015 State Assessment 10th Grade (% on track to be college-ready)				ACT District-Wide Composite Score All Students
FY 2015	% Chg. '05-'15	Teachers	% Chg. '05-'15	Non- Teachers	% Chg. '05-'15	Current Oper. (millions)	% Chg. '05-'15	Math		English/Language Arts		
								Low Income	Not Low Inc.	Low Income	Not Low Inc.	
837	-6%	62	-11%	57	-9%	1.7	100%	25.0	43.9	29.2	34.1	21.0
546	-17%	47	-4%	47	10%	1.4	826%	16.0	12.5	16.0	50.0	20.7
5,656	55%	297	36%	237	36%	4.6	298%	16.9	47.5	20.3	49.9	23.7
2,174	3%	137	5%	121	55%	1.7	22%	16.3	26.2	23.3	35.5	21.6
508	-29%	36	-27%	37	-28%	0.5	10%	0.0	23.8	10.5	28.6	20.0
1,883	26%	117	31%	146	7%	1.3	130%	31.0	32.7	34.5	35.5	21.3
684	-17%	47	-14%	45	-21%	0.7	-4%	11.1	28.3	22.2	32.6	21.2
1,882	-11%	115	-13%	122	-66%	2.6	16%	9.7	19.5	12.9	28.0	21.3
276	-11%	21	-23%	24	-15%	0.5	156%	0.0	30.0	0.0	40.0	21.6
491	-6%	40	2%	38	-28%	1.4	94%	10.0	17.4	10.0	21.7	20.4
1,603	-8%	94	-9%	85	0%	2.5	103%	19.5	33.7	9.8	26.7	22.9
345	-24%	30	-22%	27	-30%	1.0	440%	0.0	30.8	0.0	30.8	22.5
164	0%	15	-12%	12	-20%	0.7	120%	0.0	0.0	0.0	0.0	22.4
359	-16%	26	-23%	28	16%	0.6	-12%	10.5	20.0	10.5	40.0	18.6
984	18%	68	5%	62	11%	0.7	184%	2.9	6.1	17.6	24.5	18.8
974	-19%	77	-18%	63	-17%	1.7	160%	3.4	12.2	13.8	26.8	19.7
463,266	5%	30,150	5%	34,353	10%	853.1	82%	11%	32%	17%	40%	21.9

Co.	USD	District Name	FY 2015 Spending Per Pupil							FY 2015 Aid Per Pupil					
			Total	% Chg. '05-'15	Instr.	% Chg. '05-'15	Instr. % of Total	Admin.	% Chg. '05-'15	State	% Chg. '05-'15	Federal	% Chg. '05-'15	Local	% Chg. '05-'15
CK	499	Galena	13,924	37%	8,553	46%	61%	1,372	13%	10,693	39%	997	20%	2,296	38%
CK	404	Riverton	12,896	36%	7,970	52%	62%	1,268	56%	9,547	40%	689	36%	2,662	25%
CN	103	Cheylin	18,188	53%	9,755	41%	54%	2,634	68%	11,276	53%	1,022	112%	5,890	44%
CN	297	St Francis	12,313	17%	7,568	22%	61%	945	31%	8,882	42%	641	20%	2,790	-26%
CA	220	Ashland	15,962	31%	10,792	47%	68%	1,603	24%	9,656	40%	668	29%	5,638	17%
CA	219	Minneola	14,593	34%	7,705	29%	53%	1,893	45%	9,201	42%	530	1%	4,862	25%
CY	379	Clay Center	15,028	40%	8,945	50%	60%	1,339	13%	8,364	39%	1,364	28%	5,300	47%
CD	333	Concordia	15,595	34%	10,416	54%	67%	1,414	43%	9,053	37%	1,371	-11%	5,197	50%
CD	334	Southern Cloud	16,694	54%	10,344	52%	62%	1,800	31%	10,904	56%	1,044	38%	4,747	54%
CF	244	Burlington	13,802	14%	7,647	26%	55%	1,185	7%	8,217	92%	1,088	-17%	4,497	-31%
CF	243	Lebo-Waverly	13,293	39%	8,130	48%	61%	1,071	2%	10,773	54%	504	48%	2,015	-11%
CF	245	LeRoy-Gridley	14,332	24%	8,103	18%	57%	1,367	20%	10,051	39%	532	-48%	3,749	12%
CM	300	Comanche County	14,234	28%	8,106	39%	57%	1,669	32%	9,317	86%	366	-23%	4,552	-19%
CL	470	Arkansas City	11,731	43%	6,613	42%	56%	853	1%	9,604	65%	838	-5%	1,289	-13%
CL	462	Central	15,224	45%	7,768	32%	51%	1,612	57%	11,623	52%	772	35%	2,829	26%
CL	471	Dexter	15,111	60%	9,201	68%	61%	2,230	41%	12,007	55%	581	14%	2,523	113%
State of Kansas			13,088	35%	6,925	34%	53%	1,182	21%	8,567	60%	1,101	22%	3,469	0%



FTE Enrollment		FTE Employment FY 2015				Unencumbered Carryover Cash		2015 State Assessment 10th Grade (% on track to be college-ready)				ACT District-Wide Composite Score All Students
FY 2015	% Chg. '05-'15	Teachers	% Chg. '05-'15	Non- Teachers	% Chg. '05-'15	Current Oper. (millions)	% Chg. '05-'15	Math Low Income	Not Low Inc.	English/Language Arts Low Income	Not Low Inc.	
796	6%	57	-3%	84	44%	0.9	-9%	0.0	5.0	5.3	25.0	20.3
731	-11%	54	-5%	87	72%	0.5	14%	3.2	15.4	16.1	26.9	19.6
137	-14%	15	-14%	11	-28%	0.4	139%	0.0	0.0	0.0	0.0	23.3
277	-15%	26	-20%	20	0%	0.7	5%	0.0	18.2	0.0	27.3	19.5
195	-10%	17	-14%	21	-3%	0.6	113%	0.0	18.2	0.0	27.3	21.5
249	-7%	19	3%	22	-39%	0.5	17%	0.0	13.3	0.0	13.3	19.6
1,337	-3%	100	-5%	160	20%	2.9	47%	11.1	45.1	20.0	40.8	21.7
1,016	-4%	71	-17%	115	-10%	1.5	-3%	20.0	34.1	27.5	31.7	21.7
232	-1%	33	5%	23	2%	0.2	-42%	7.1	0.0	28.6	0.0	20.3
821	-3%	55	-9%	90	8%	3.8	98%	21.1	30.2	26.3	39.5	21.4
453	-20%	37	-24%	49	21%	0.7	100%	6.7	13.3	13.3	36.7	23.3
214	-17%	20	-26%	15	-26%	0.9	95%	8.3	0.0	8.3	0.0	22.8
312	1%	24	-8%	29	-25%	1.0	91%	0.0	33.3	0.0	20.0	19.3
2,768	-2%	167	1%	203	32%	1.3	49%	10.8	20.5	17.5	25.3	20.7
310	-10%	27	-5%	27	18%	0.2	123%	0.0	0.0	0.0	30.0	21.2
145	-36%	16	-3%	24	42%	0.2	-42%	0.0	0.0	0.0	0.0	19.7
463,266	5%	30,150	5%	34,353	10%	853.1	82%	11%	32%	17%	40%	21.9

Co.	USD	District Name	FY 2015 Spending Per Pupil							FY 2015 Aid Per Pupil					
			Total	% Chg. '05-'15	Instr.	% Chg. '05-'15	Instr. % of Total	Admin.	% Chg. '05-'15	State	% Chg. '05-'15	Federal	% Chg. '05-'15	Local	% Chg. '05-'15
CL	463	Udall	13,413	32%	7,769	39%	58%	1,932	53%	10,522	42%	534	65%	2,357	-2%
CL	465	Winfield	16,551	51%	9,923	52%	60%	1,251	39%	9,148	64%	1,654	-32%	5,749	95%
CR	247	Cherokee	15,143	69%	8,864	70%	59%	1,471	30%	11,307	63%	840	53%	2,996	102%
CR	249	Frontenac	11,552	38%	7,236	55%	63%	809	-1%	9,338	38%	443	59%	1,770	35%
CR	248	Girard	12,117	35%	7,571	39%	62%	1,155	57%	9,284	41%	805	84%	2,029	5%
CR	246	Northeast	14,131	44%	8,117	60%	57%	1,314	34%	11,188	47%	1,083	53%	1,860	24%
CR	250	Pittsburg	11,987	32%	7,076	45%	59%	952	33%	8,678	69%	929	-4%	2,381	-20%
DC	294	Oberlin	13,794	30%	8,233	31%	60%	1,483	39%	8,839	39%	619	-3%	4,336	21%
DK	435	Abilene	10,927	31%	6,478	25%	59%	1,116	45%	7,761	42%	606	-23%	2,560	21%
DK	473	Chapman	12,279	33%	6,535	24%	53%	1,354	47%	8,552	38%	526	26%	3,201	20%
DK	487	Herington	13,871	49%	7,249	35%	52%	1,247	32%	10,773	49%	754	56%	2,472	58%
DK	481	Rural Vista	15,193	55%	8,472	67%	56%	1,139	21%	10,007	44%	585	26%	4,601	93%
DK	393	Solomon	14,072	46%	8,291	51%	59%	1,628	37%	9,734	40%	551	-31%	3,788	101%
DP	111	Doniphan West	15,410	New	8,859	New	57%	1,246	New	9,303	New	575	New	5,532	New
DP	114	Riverside	12,701	New	7,124	New	56%	1,317	New	10,664	New	697	New	1,416	New
DP	429	Troy	13,250	43%	10,143	92%	77%	741	-47%	9,417	23%	410	9%	3,440	176%
State of Kansas			13,088	35%	6,925	34%	53%	1,182	21%	8,567	60%	1,101	22%	3,469	0%

FTE Enrollment		FTE Employment FY 2015				Unencumbered Carryover Cash		2015 State Assessment 10th Grade (% on track to be college-ready)				ACT District-Wide Composite Score All Students
FY 2015	% Chg. '05-'15	Teachers	% Chg. '05-'15	Non- Teachers	% Chg. '05-'15	Current Oper. (millions)	% Chg. '05-'15	Math		English/Language Arts		
								Low Income	Not Low Inc.	Low Income	Not Low Inc.	
331	-9%	30	7%	27	-6%	0.6	58%	0.0	16.7	0.0	16.7	20.6
2,192	-11%	154	-15%	341	15%	2.1	60%	19.4	32.4	26.4	34.3	21.6
564	-29%	49	-14%	68	23%	0.7	59%	0.0	17.9	9.1	17.9	20.8
876	18%	62	21%	34	19%	0.8	79%	25.0	23.8	25.0	28.6	22.0
981	-5%	70	8%	55	18%	1.6	21%	N/A	21.2	N/A	42.4	21.8
487	-16%	49	18%	48	48%	1.0	161%	2.8	0.0	16.7	7.7	19.5
2,873	16%	177	21%	199	17%	1.5	44%	15.8	23.0	14.2	25.3	21.5
332	-23%	31	-19%	26	2%	0.5	-17%	0.0	11.8	0.0	17.6	23.4
1,571	12%	93	4%	82	8%	4.3	85%	6.3	29.5	25.0	47.4	21.7
1,048	10%	87	20%	116	69%	1.0	32%	6.3	20.8	21.9	50.9	22.1
466	-8%	37	-16%	36	-20%	0.7	21%	25.0	16.7	12.5	33.3	19.6
291	-32%	32	-24%	19	-47%	1.0	110%	15.4	28.6	23.1	42.9	22.4
326	-19%	29	-8%	34	16%	0.3	66%	0.0	17.6	0.0	17.6	20.0
319	New	32	New	32	New	0.3	New	10.0	17.6	20.0	23.5	20.1
645	New	48	New	52	New	0.7	New	6.5	29.2	12.9	37.5	19.1
317	-15%	28	-11%	19	-52%	0.8	77%	0.0	10.0	0.0	20.0	21.9
463,266	5%	30,150	5%	34,353	10%	853.1	82%	11%	32%	17%	40%	21.9

Co.	USD	District Name	FY 2015 Spending Per Pupil							FY 2015 Aid Per Pupil					
			Total	% Chg. '05-'15	Instr.	% Chg. '05-'15	Instr. % of Total	Admin.	% Chg. '05-'15	State	% Chg. '05-'15	Federal	% Chg. '05-'15	Local	% Chg. '05-'15
DG	348	Baldwin City	12,529	40%	6,204	44%	50%	1,058	-22%	8,550	46%	426	94%	3,553	24%
DG	491	Eudora	13,427	33%	6,573	29%	49%	743	-14%	8,936	37%	1,070	331%	3,443	4%
DG	497	Lawrence	12,437	23%	6,457	33%	52%	1,137	16%	7,060	89%	724	-38%	4,661	-13%
ED	347	Kinsley-Offerle	15,233	42%	8,876	39%	58%	1,902	44%	10,681	63%	667	-18%	3,885	16%
ED	502	Lewis	14,981	26%	9,323	20%	62%	1,838	48%	11,067	47%	583	-26%	3,332	-7%
EK	283	Elk Valley	18,402	60%	10,812	74%	59%	2,315	87%	13,483	53%	1,177	42%	3,743	100%
EK	282	West Elk	24,927	95%	17,087	106%	69%	1,706	19%	12,182	53%	5,271	193%	7,597	148%
EL	388	Ellis	12,210	28%	7,072	29%	58%	1,283	-11%	7,974	25%	452	12%	3,784	37%
EL	489	Hays	13,770	32%	9,197	54%	67%	1,211	14%	6,702	45%	1,605	17%	5,463	24%
EL	432	Victoria	14,096	26%	7,169	10%	51%	1,370	2%	7,976	18%	386	2%	5,734	42%
EW	112	Central Plains	16,820	New	8,707	New	52%	1,535	New	11,691	New	566	New	4,563	New
EW	327	Ellsworth	11,380	14%	6,471	21%	57%	1,379	19%	8,831	27%	479	50%	2,122	-21%
FI	457	Garden City	12,489	43%	6,645	40%	53%	1,116	20%	9,153	73%	1,237	9%	2,099	-32%
FI	363	Holcomb	11,624	5%	6,199	19%	53%	1,260	12%	7,320	103%	641	70%	3,663	-53%
FO	459	Bucklin	14,310	35%	8,905	42%	62%	1,770	28%	9,606	37%	733	28%	3,971	31%
FO	443	Dodge City	12,578	27%	6,434	16%	51%	1,363	56%	10,231	66%	1,423	-4%	923	-60%
State of Kansas			13,088	35%	6,925	34%	53%	1,182	21%	8,567	60%	1,101	22%	3,469	0%

FTE Enrollment		FTE Employment FY 2015				Unencumbered Carryover Cash		2015 State Assessment 10th Grade (% on track to be college-ready)				ACT District-Wide Composite Score All Students
FY 2015	% Chg. '05-'15	Teachers	% Chg. '05-'15	Non- Teachers	% Chg. '05-'15	Current Oper. (millions)	% Chg. '05-'15	Math Low Income	Not Low Inc.	English/Language Arts Low Income	Not Low Inc.	
1,336	2%	82	-8%	72	-17%	1.3	3%	7.4	31.6	18.5	43.4	21.5
1,590	29%	101	26%	67	-3%	0.4	-29%	8.8	30.4	17.6	50.7	22.3
11,304	16%	724	24%	844	5%	28.1	388%	13.6	36.7	21.0	48.7	23.6
334	4%	26	-9%	26	-2%	0.3	-18%	10.5	33.3	21.1	33.3	20.1
105	-25%	9	-51%	9	-27%	0.8	66%	N/A	N/A	N/A	N/A	N/A
140	-30%	16	-3%	15	-21%	0.5	134%	0.0	0.0	0.0	0.0	18.5
318	-25%	29	-18%	49	-45%	0.8	16%	0.0	0.0	0.0	0.0	20.9
411	10%	27	-13%	30	18%	0.5	-15%	25.0	45.2	33.3	32.3	23.2
2,852	-2%	169	-16%	177	-34%	2.9	190%	30.0	35.6	30.0	47.5	22.2
281	6%	23	-13%	17	-21%	0.4	2056%	0.0	20.0	0.0	53.3	20.4
494	New	60	New	56	New	2.4	New	15.0	32.1	25.0	39.3	19.3
592	0%	45	-8%	34	-18%	0.9	86%	19.0	31.4	9.5	28.6	23.4
7,213	4%	437	9%	557	6%	12.2	115%	2.5	10.0	11.2	34.8	19.7
953	12%	71	14%	74	20%	2.1	112%	3.4	28.2	6.9	33.3	21.2
224	-12%	22	-3%	22	28%	0.3	-49%	0.0	0.0	0.0	0.0	23.1
6,402	13%	385	10%	411	3%	13.4	202%	7.8	11.8	11.7	33.3	20.2
463,266	5%	30,150	5%	34,353	10%	853.1	82%	11%	32%	17%	40%	21.9

Co.	USD	District Name	FY 2015 Spending Per Pupil							FY 2015 Aid Per Pupil					
			Total	% Chg. '05-'15	Instr.	% Chg. '05-'15	Instr. % of Total	Admin.	% Chg. '05-'15	State	% Chg. '05-'15	Federal	% Chg. '05-'15	Local	% Chg. '05-'15
FO	381	Spearville	14,104	48%	7,218	43%	51%	1,558	41%	9,700	33%	336	-2%	4,068	115%
FR	288	Central Heights	13,884	48%	8,035	56%	58%	1,441	49%	10,730	53%	825	83%	2,329	20%
FR	290	Ottawa	12,678	64%	6,501	41%	51%	970	18%	8,552	64%	1,023	40%	3,102	73%
FR	289	Wellsville	12,349	21%	7,001	28%	57%	1,035	25%	9,011	36%	348	51%	2,990	-10%
FR	287	West Franklin	15,359	61%	8,805	50%	57%	1,551	84%	10,486	48%	568	73%	4,305	102%
GE	475	Geary County	14,110	54%	6,599	31%	47%	1,161	9%	7,580	61%	7,287	124%	0	-100%
GO	291	Grinnell	18,514	44%	10,885	37%	59%	2,154	67%	11,668	28%	578	38%	6,269	86%
GO	293	Quinter	14,497	22%	9,449	30%	65%	1,682	33%	9,980	23%	487	8%	4,030	20%
GO	292	Wheatland	19,123	70%	12,107	77%	63%	2,316	58%	11,514	41%	680	2%	6,929	189%
GH	281	Graham County	12,683	10%	7,858	16%	62%	1,253	17%	7,979	-1%	546	-5%	4,158	41%
GT	214	Ulysses	11,313	25%	6,245	32%	55%	1,068	11%	6,706	132%	902	1%	3,705	-29%
GY	102	Cimarron-Ensign	12,065	23%	7,518	47%	62%	963	-6%	9,276	45%	765	107%	2,023	-33%
GY	476	Copeland	20,770	32%	10,083	32%	49%	3,006	20%	12,443	42%	899	-6%	7,428	24%
GY	477	Ingalls	14,072	37%	7,743	34%	55%	1,510	22%	9,158	27%	535	-18%	4,379	84%
GY	371	Montezuma	14,728	20%	7,978	21%	54%	2,194	41%	10,004	41%	495	32%	4,229	-11%
GL	200	Greeley County	16,185	37%	7,484	16%	46%	1,600	57%	9,181	60%	653	5%	6,351	17%
State of Kansas			13,088	35%	6,925	34%	53%	1,182	21%	8,567	60%	1,101	22%	3,469	0%

FTE Enrollment		FTE Employment FY 2015				Unencumbered Carryover Cash		2015 State Assessment 10th Grade (% on track to be college-ready)				ACT District-Wide Composite Score All Students
FY 2015	% Chg. '05-'15	Teachers	% Chg. '05-'15	Non- Teachers	% Chg. '05-'15	Current Oper. (millions)	% Chg. '05-'15	Math (% on track to be college-ready)		English/Language Arts		
								Low Income	Not Low Inc.	Low Income	Not Low Inc.	
339	-1%	29	13%	18	-6%	1.5	762%	0.0	16.0	0.0	16.0	21.6
560	-9%	44	-4%	36	7%	0.5	153%	0.0	22.7	27.3	36.4	21.5
2,405	3%	148	11%	178	33%	4.6	35%	14.8	31.3	17.3	36.4	21.3
767	-4%	51	-12%	41	-10%	0.5	8%	5.9	24.4	23.5	22.2	21.8
554	-37%	49	-36%	45	-16%	2.2	173%	10.0	13.0	15.0	21.7	N/A
8,115	34%	502	35%	600	18%	25.5	850%	9.3	21.8	19.8	35.0	20.3
83	-31%	10	-40%	9	-21%	0.3	175%	N/A	N/A	N/A	N/A	N/A
287	-14%	28	-7%	29	-35%	0.2	-49%	0.0	25.0	0.0	37.5	21.2
107	-42%	17	1%	18	-20%	0.3	-25%	0.0	80.0	0.0	80.0	22.9
391	-4%	32	-6%	18	-49%	1.1	38%	6.3	14.3	25.0	28.6	21.4
1,716	1%	103	-7%	110	-16%	4.6	127%	8.6	23.4	14.3	42.6	19.8
643	-1%	53	20%	67	32%	0.9	108%	6.7	39.4	20.0	51.5	21.8
103	-11%	12	-14%	11	-36%	0.7	208%	0.0	N/A	0.0	N/A	N/A
227	-7%	21	0%	23	-15%	0.3	141%	0.0	27.3	0.0	36.4	19.3
242	0%	20	-4%	29	56%	1.6	780%	0.0	41.7	0.0	50.0	20.3
244	-9%	25	-3%	32	-1%	0.4	101%	8.3	0.0	16.7	0.0	21.6
463,266	5%	30,150	5%	34,353	10%	853.1	82%	11%	32%	17%	40%	21.9

Co.	USD	District Name	FY 2015 Spending Per Pupil							FY 2015 Aid Per Pupil					
			Total	% Chg. '05-'15	Instr.	% Chg. '05-'15	Instr. % of Total	Admin.	% Chg. '05-'15	State	% Chg. '05-'15	Federal	% Chg. '05-'15	Local	% Chg. '05-'15
GW	389	Eureka	13,583	16%	7,068	18%	52%	1,347	59%	10,757	46%	1,177	25%	1,650	-52%
GW	390	Hamilton	15,736	17%	9,533	24%	61%	3,061	79%	12,248	26%	798	30%	2,690	-12%
GW	386	Madison-Virgil	14,426	34%	8,611	38%	60%	1,558	25%	11,270	41%	719	0%	2,522	22%
HM	494	Syracuse	13,949	13%	6,718	22%	48%	1,491	19%	9,195	110%	999	1%	3,755	-46%
HP	361	Anthony-Harper	13,896	39%	8,038	46%	58%	1,469	21%	8,585	28%	749	7%	4,562	75%
HP	511	Attica	17,812	49%	10,929	59%	61%	2,518	19%	10,266	28%	774	31%	6,772	102%
HV	369	Burrton	16,422	48%	9,560	51%	58%	1,800	30%	10,615	41%	689	6%	5,118	76%
HV	440	Halstead	12,020	30%	6,292	31%	52%	1,246	3%	9,538	42%	487	53%	1,996	-11%
HV	460	Hesston	11,982	20%	6,136	29%	51%	1,106	11%	9,047	37%	330	47%	2,606	-17%
HV	373	Newton	13,715	48%	7,817	55%	57%	1,100	22%	8,565	59%	1,390	33%	3,760	33%
HV	439	Sedgwick	10,845	36%	7,075	52%	65%	1,129	33%	9,473	37%	498	41%	905	31%
HS	507	Satanta	15,966	46%	8,944	41%	56%	1,806	35%	10,043	146%	470	-36%	5,454	-11%
HS	374	Sublette	14,495	19%	7,914	40%	55%	1,517	6%	8,671	150%	673	18%	5,150	-37%
HG	227	Hodgeman Co.	14,265	39%	7,586	42%	53%	978	33%	8,616	25%	517	35%	5,131	75%
JA	336	Holton	16,313	40%	11,744	50%	72%	1,051	15%	9,425	40%	1,364	0%	5,524	53%
JA	335	North Jackson	13,455	52%	7,534	40%	56%	1,058	21%	10,298	40%	446	36%	2,712	129%
State of Kansas			13,088	35%	6,925	34%	53%	1,182	21%	8,567	60%	1,101	22%	3,469	0%



FTE Enrollment		FTE Employment FY 2015				Unencumbered Carryover Cash		2015 State Assessment 10th Grade (% on track to be college-ready)				ACT District-Wide Composite Score All Students
FY 2015	% Chg. '05-'15	Teachers	% Chg. '05-'15	Non- Teachers	% Chg. '05-'15	Current Oper. (millions)	% Chg. '05-'15	Math		English/Language Arts		
								Low Income	Not Low Inc.	Low Income	Not Low Inc.	
637	-6%	47	-5%	50	-24%	2.9	2546%	12.5	18.8	37.5	31.3	22.3
88	-19%	12	-15%	12	-35%	0.4	119%	0.0	0.0	0.0	0.0	21.2
229	-6%	24	0%	32	59%	0.3	19%	12.5	0.0	31.3	0.0	21.1
501	7%	38	-1%	43	10%	2.6	374%	6.3	26.3	25.0	57.9	20.4
848	-7%	69	-1%	67	5%	1.5	221%	8.0	15.8	16.0	47.4	20.9
155	21%	17	-3%	13	50%	0.4	245%	0.0	0.0	0.0	0.0	18.0
226	-11%	28	17%	26	10%	0.3	96%	0.0	10.0	0.0	40.0	19.7
762	11%	54	10%	44	5%	1.3	77%	3.8	25.0	11.5	36.1	22.7
798	4%	54	6%	46	-1%	1.1	73%	27.3	17.4	45.5	39.1	21.9
3,395	-2%	214	8%	302	12%	5.5	152%	9.8	27.1	18.7	44.5	23.1
484	-7%	35	3%	27	5%	2.5	380%	20.0	25.0	20.0	45.8	21.7
294	-25%	30	-15%	29	8%	0.7	80%	0.0	0.0	10.0	0.0	18.6
488	2%	39	5%	55	35%	0.6	167%	0.0	10.5	11.1	26.3	18.2
287	-3%	25	0%	28	-13%	0.8	462%	0.0	41.7	0.0	33.3	22.1
1,119	1%	79	20%	128	20%	1.9	44%	14.3	37.7	32.1	43.4	21.9
376	-11%	30	-4%	27	34%	1.2	388%	0.0	18.8	0.0	50.0	21.5
463,266	5%	30,150	5%	34,353	10%	853.1	82%	11%	32%	17%	40%	21.9

Co.	USD	District Name	FY 2015 Spending Per Pupil							FY 2015 Aid Per Pupil					
			Total	% Chg. '05-'15	Instr.	% Chg. '05-'15	Instr. % of Total	Admin.	% Chg. '05-'15	State	% Chg. '05-'15	Federal	% Chg. '05-'15	Local	% Chg. '05-'15
JA	337	Royal Valley	12,691	20%	7,063	25%	56%	1,156	13%	10,039	41%	992	-46%	1,659	5%
JF	339	Jefferson Co. North	13,504	31%	8,128	49%	60%	1,521	19%	10,897	39%	496	30%	2,112	2%
JF	340	Jefferson West	12,406	36%	7,260	37%	59%	1,033	11%	9,576	42%	537	106%	2,294	8%
JF	342	McLouth	12,470	38%	7,109	37%	57%	1,209	-3%	9,721	43%	544	51%	2,205	17%
JF	341	Oskaloosa	13,566	32%	7,994	35%	59%	1,378	17%	11,072	47%	1,099	65%	1,395	-32%
JF	343	Perry	13,926	53%	8,488	54%	61%	1,224	33%	9,543	57%	523	68%	3,860	41%
JF	338	Valley Falls	13,344	41%	7,824	27%	59%	1,983	73%	10,799	49%	563	40%	1,981	9%
JW	107	Rock Hills	15,323	New	8,542	New	56%	1,432	New	10,101	New	942	New	4,280	New
JO	229	Blue Valley	13,146	26%	6,240	30%	47%	1,134	22%	6,856	92%	315	27%	5,998	-9%
JO	232	De Soto	11,902	19%	5,743	23%	48%	741	-31%	7,963	72%	339	5%	3,616	-29%
JO	231	Gardner-Edgerton	11,870	19%	5,748	27%	48%	951	-8%	8,752	86%	471	-2%	2,696	-44%
JO	233	Olathe	12,775	26%	6,587	27%	52%	932	13%	8,452	81%	624	36%	3,726	-25%
JO	512	Shawnee Mission	12,254	37%	6,300	29%	51%	997	35%	6,518	100%	649	56%	5,106	-3%
JO	230	Spring Hill	11,038	17%	5,696	18%	52%	1,055	45%	8,234	64%	362	-17%	2,558	-36%
KE	216	Deerfield	20,107	73%	11,788	104%	59%	2,394	82%	11,715	181%	2,817	90%	5,575	-7%
KE	215	Lakin	13,637	17%	7,474	35%	55%	1,537	30%	7,877	122%	907	104%	4,852	-35%
State of Kansas			13,088	35%	6,925	34%	53%	1,182	21%	8,567	60%	1,101	22%	3,469	0%

FTE Enrollment		FTE Employment FY 2015				Unencumbered Carryover Cash		2015 State Assessment 10th Grade (% on track to be college-ready)				ACT District-Wide Composite Score All Students
FY 2015	% Chg. '05-'15	Teachers	% Chg. '05-'15	Non- Teachers	% Chg. '05-'15	Current Oper. (millions)	% Chg. '05-'15	Math		English/Language Arts		
								Low Income	Not Low Inc.	Low Income	Not Low Inc.	
872	-6%	59	7%	61	5%	1.3	65%	16.1	14.9	22.6	23.4	19.9
420	-14%	36	0%	36	-3%	1.1	152%	0.0	40.9	0.0	45.5	23.6
822	-13%	52	-15%	60	-21%	1.5	87%	11.8	37.3	5.9	52.5	23.2
490	-12%	37	-5%	28	-3%	1.2	186%	0.0	18.2	8.3	27.3	21.8
535	-13%	39	-15%	38	-4%	1.5	1566%	6.1	12.5	27.3	41.7	20.5
759	-21%	57	-13%	46	-22%	1.9	94%	0.0	18.9	0.0	13.5	24.0
386	-10%	32	-3%	33	-30%	0.6	446%	0.0	66.7	0.0	53.3	22.2
280	New	25	New	26	New	1.9	New	20.0	0.0	30.0	0.0	22.1
21,375	16%	1237	17%	1359	25%	56.6	98%	33.1	54.0	32.3	54.5	25.4
6,752	48%	399	37%	342	38%	6.0	96%	24.1	45.5	33.7	56.7	24.0
5,360	57%	312	55%	314	13%	4.7	129%	14.2	28.5	26.0	43.4	23.5
27,601	23%	1668	17%	1840	30%	26.9	-15%	15.8	45.1	20.9	49.2	24.0
26,280	-6%	1455	-4%	1357	-13%	33.9	27%	13.1	40.8	20.6	52.2	23.9
3,175	98%	141	54%	212	115%	3.2	27%	16.4	22.8	20.0	36.3	23.4
197	-41%	26	-9%	27	-32%	1.3	12%	10.0	0.0	0.0	0.0	18.6
642	-1%	55	11%	64	58%	2.3	7%	4.8	11.5	0.0	26.9	20.6
463,266	5%	30,150	5%	34,353	10%	853.1	82%	11%	32%	17%	40%	21.9

Co.	USD	District Name	FY 2015 Spending Per Pupil							FY 2015 Aid Per Pupil					
			Total	% Chg. '05-'15	Instr.	% Chg. '05-'15	Instr. % of Total	Admin.	% Chg. '05-'15	State	% Chg. '05-'15	Federal	% Chg. '05-'15	Local	% Chg. '05-'15
KM	332	Cunningham	17,125	26%	9,495	23%	55%	2,522	53%	10,823	84%	596	-49%	5,705	-13%
KM	331	Kingman - Norwich	12,753	32%	6,822	27%	53%	1,211	45%	8,864	46%	523	-34%	3,368	22%
KW	422	Greensburg	15,666	62%	9,003	65%	57%	2,371	75%	11,037	82%	716	55%	3,914	24%
KW	474	Haviland	19,738	46%	11,204	34%	57%	3,281	58%	11,225	57%	591	-2%	7,921	37%
LB	505	Chetopa-St. Paul	14,606	27%	9,030	24%	62%	1,320	-21%	11,116	34%	1,039	-43%	2,451	74%
LB	506	Labette County	11,049	34%	6,455	30%	58%	930	45%	9,065	50%	687	45%	1,297	-24%
LB	504	Oswego	13,620	39%	8,239	56%	60%	1,538	21%	10,570	31%	1,202	89%	1,912	71%
LB	503	Parsons	12,474	39%	6,824	27%	55%	1,256	23%	9,790	63%	883	-26%	1,801	0%
LE	482	Dighton	18,205	51%	7,117	14%	39%	2,380	12%	9,117	40%	543	-11%	8,545	74%
LE	468	Healy	19,057	48%	12,326	59%	65%	2,949	13%	12,527	41%	1,159	222%	5,371	49%
LV	458	Basehor-Linwood	12,827	64%	6,787	102%	53%	1,099	-13%	7,306	52%	528	329%	5,002	74%
LV	449	Easton	13,709	39%	7,717	44%	56%	1,517	30%	10,451	45%	441	68%	2,817	20%
LV	207	Ft Leavenworth	20,452	64%	5,636	17%	28%	1,124	5%	4,899	14%	8,052	21%	7,501	386%
LV	469	Lansing	12,256	69%	6,419	68%	52%	921	44%	8,264	71%	327	91%	3,696	65%
LV	453	Leavenworth	12,933	22%	6,133	5%	47%	1,164	9%	9,027	71%	1,074	-28%	2,835	-27%
LV	464	Tonganoxie	10,347	37%	5,309	14%	51%	896	40%	7,827	56%	326	65%	2,207	-5%
State of Kansas			13,088	35%	6,925	34%	53%	1,182	21%	8,567	60%	1,101	22%	3,469	0%

FTE Enrollment		FTE Employment FY 2015				Unencumbered Carryover Cash		2015 State Assessment 10th Grade (% on track to be college-ready)				ACT District-Wide Composite Score All Students
FY 2015	% Chg. '05-'15	Teachers	% Chg. '05-'15	Non- Teachers	% Chg. '05-'15	Current Oper. (millions)	% Chg. '05-'15	Math		English/Language Arts		
								Low Income	Not Low Inc.	Low Income	Not Low Inc.	
158	-31%	18	-32%	15	-41%	0.8	160%	0.0	0.0	0.0	0.0	23.1
938	-15%	67	-14%	51	-20%	1.5	90%	9.1	40.4	24.2	49.1	20.1
334	12%	26	0%	34	65%	2.1	316%	11.8	24.0	17.6	52.0	19.2
101	-39%	10	-43%	11	-30%	0.6	173%	N/A	N/A	N/A	N/A	N/A
453	55%	41	59%	54	115%	0.5	69%	17.4	15.8	26.1	47.4	19.3
1,492	-9%	99	-3%	93	-1%	2.1	212%	10.8	24.6	18.5	33.8	20.4
468	-5%	36	-5%	30	-10%	1.4	172%	53.3	45.5	40.0	36.4	22.2
1,225	-18%	83	-16%	75	-14%	2.0	333%	8.6	23.3	24.1	41.9	21.4
232	-4%	23	2%	37	116%	0.4	70%	0.0	0.0	0.0	0.0	18.9
68	-42%	10	-21%	12	-28%	0.3	-11%	0.0	0.0	0.0	0.0	21.0
2,320	13%	116	23%	139	58%	2.2	201%	17.9	39.4	17.9	37.5	22.9
620	-10%	48	2%	58	81%	1.0	256%	17.6	32.1	17.6	14.3	21.6
1,739	6%	111	2%	122	49%	2.7	3892%	N/A	N/A	N/A	N/A	N/A
2,535	21%	139	19%	168	100%	2.6	94%	14.0	35.7	28.1	48.5	22.7
3,643	-7%	214	-17%	330	-24%	7.0	92%	9.9	32.1	11.8	35.7	21.9
1,908	21%	134	45%	159	97%	1.8	264%	6.1	17.3	14.3	26.5	21.9
463,266	5%	30,150	5%	34,353	10%	853.1	82%	11%	32%	17%	40%	21.9

Co.	USD	District Name	FY 2015 Spending Per Pupil							FY 2015 Aid Per Pupil					
			Total	% Chg. '05-'15	Instr.	% Chg. '05-'15	Instr. % of Total	Admin.	% Chg. '05-'15	State	% Chg. '05-'15	Federal	% Chg. '05-'15	Local	% Chg. '05-'15
LC	298	Lincoln	14,697	34%	8,721	42%	59%	2,005	69%	10,542	54%	941	98%	3,278	-10%
LC	299	Sylvan Grove	16,883	57%	8,078	36%	48%	1,819	26%	10,413	40%	652	31%	5,818	108%
LN	346	Jayhawk	14,776	27%	7,449	21%	50%	1,491	25%	10,881	48%	795	9%	3,099	-14%
LN	344	Pleasanton	12,658	34%	7,255	33%	57%	2,140	53%	10,835	49%	807	28%	1,016	-33%
LN	362	Prairie View	15,097	36%	7,542	44%	50%	1,383	40%	8,935	101%	547	43%	5,615	-11%
LG	274	Oakley	13,660	37%	8,272	31%	61%	1,819	37%	8,378	28%	524	-10%	4,758	70%
LG	275	Triplains	21,358	46%	12,731	42%	60%	2,387	17%	13,365	71%	772	42%	7,221	15%
LY	253	Emporia	13,890	35%	8,120	36%	58%	1,157	21%	9,191	54%	1,432	-22%	3,266	32%
LY	251	North Lyon Co.	14,377	39%	8,136	49%	57%	1,920	71%	9,352	28%	649	69%	4,376	65%
LY	252	Southern Lyon Co.	14,361	41%	8,033	52%	56%	1,074	17%	9,757	39%	446	34%	4,163	49%
MN	397	Centre	8,828	-24%	5,268	-22%	60%	1,118	23%	8,085	7%	270	-57%	503	-85%
MN	410	Durham-Hill.-Lehigh	13,756	37%	7,978	42%	58%	1,354	31%	10,105	45%	468	3%	3,222	23%
MN	411	Goessel	13,427	18%	8,076	30%	60%	1,733	59%	11,117	36%	467	49%	1,927	-33%
MN	408	Marion-Florence	14,578	55%	8,261	52%	57%	1,555	74%	10,344	46%	546	35%	3,759	94%
MN	398	Peabody-Burns	16,291	54%	8,383	49%	51%	2,113	87%	10,682	45%	658	17%	4,951	88%
MS	364	Marysville	15,839	41%	10,711	61%	68%	1,282	16%	8,282	34%	866	82%	6,692	45%
State of Kansas			13,088	35%	6,925	34%	53%	1,182	21%	8,567	60%	1,101	22%	3,469	0%

FTE Enrollment		FTE Employment FY 2015				Unencumbered Carryover Cash		2015 State Assessment 10th Grade (% on track to be college-ready)				ACT District-Wide Composite Score All Students
FY 2015	% Chg. '05-'15	Teachers	% Chg. '05-'15	Non- Teachers	% Chg. '05-'15	Current Oper. (millions)	% Chg. '05-'15	Math Low Income	Not Low Inc.	English/Language Arts Low Income	Not Low Inc.	
333	-7%	32	1%	30	-17%	0.4	42%	9.1	0.0	18.2	0.0	21.4
221	37%	18	20%	16	0%	0.3	168%	0.0	0.0	0.0	0.0	22.2
515	-9%	41	-11%	28	-19%	1.2	44%	10.0	50.0	20.0	54.5	19.3
361	-10%	33	-11%	22	-30%	0.3	1%	0.0	0.0	0.0	0.0	21.7
868	-13%	63	2%	64	-13%	2.3	351%	5.0	29.4	5.0	20.6	20.7
366	-11%	32	-6%	33	-10%	0.6	52%	15.8	28.6	21.1	28.6	21.1
68	-19%	14	-1%	9	-20%	0.4	411%	0.0	0.0	0.0	0.0	18.4
4,272	-7%	306	3%	418	5%	5.9	-23%	14.1	38.0	17.4	38.9	21.1
406	-31%	38	-21%	43	-1%	0.7	18%	16.7	18.2	25.0	36.4	22.5
502	-13%	42	-5%	34	-13%	0.6	41%	27.3	25.7	18.2	22.9	21.5
483	88%	21	-18%	18	-5%	1.6	301%	15.4	16.7	7.7	8.3	21.5
546	-18%	40	-13%	37	-24%	0.8	39%	0.0	45.2	0.0	51.6	25.3
276	-2%	22	-3%	23	5%	0.5	43%	0.0	0.0	0.0	0.0	20.9
486	-24%	37	-17%	32	-13%	0.5	-24%	26.7	59.4	46.7	53.1	23.1
254	-39%	22	-31%	30	-2%	1.0	89%	9.1	38.5	18.2	7.7	20.3
708	-7%	52	-5%	118	2%	0.8	-39%	11.1	31.0	25.9	37.9	22.5
463,266	5%	30,150	5%	34,353	10%	853.1	82%	11%	32%	17%	40%	21.9

Co.	USD	District Name	FY 2015 Spending Per Pupil							FY 2015 Aid Per Pupil					
			Total	% Chg. '05-'15	Instr.	% Chg. '05-'15	Instr. % of Total	Admin.	% Chg. '05-'15	State	% Chg. '05-'15	Federal	% Chg. '05-'15	Local	% Chg. '05-'15
MS	498	Valley Heights	14,114	18%	8,220	18%	58%	1,601	41%	10,947	33%	619	-5%	2,557	-17%
MS	380	Vermillion	12,440	16%	7,426	27%	60%	1,076	-3%	9,210	31%	377	-45%	2,854	-5%
MP	419	Canton-Galva	17,266	51%	8,589	39%	50%	1,811	23%	10,102	38%	634	36%	6,530	78%
MP	448	Inman	13,131	35%	8,130	42%	62%	1,342	51%	9,079	33%	376	10%	3,676	43%
MP	418	McPherson	15,494	61%	9,491	78%	61%	1,202	39%	7,266	70%	1,500	88%	6,735	48%
MP	423	Moundridge	13,301	14%	7,799	24%	59%	1,455	22%	8,375	49%	394	55%	4,532	-21%
MP	400	Smoky Valley	12,486	30%	6,453	38%	52%	1,278	27%	9,152	47%	307	-9%	3,028	0%
ME	225	Fowler	17,076	32%	10,350	37%	61%	2,088	47%	11,041	47%	1,954	277%	4,081	-17%
ME	226	Meade	14,004	41%	7,641	30%	55%	1,358	38%	8,135	59%	426	2%	5,443	24%
MI	416	Louisburg	11,879	25%	5,555	18%	47%	1,010	42%	7,398	63%	237	24%	4,257	-10%
MI	367	Osawatomie	14,486	49%	7,844	51%	54%	1,662	43%	10,636	67%	854	27%	3,011	12%
MI	368	Paola	18,499	40%	13,006	48%	70%	1,199	37%	8,169	62%	1,637	16%	8,697	22%
MC	273	Beloit	20,105	51%	11,461	51%	57%	1,636	51%	9,236	42%	1,354	-6%	9,665	34%
MC	272	Waconda	14,491	30%	8,992	38%	62%	1,842	13%	9,644	33%	723	-5%	4,340	40%
MG	436	Caney Valley	11,127	27%	7,040	41%	63%	1,309	38%	8,904	23%	660	48%	1,584	41%
MG	447	Cherryvale	11,038	16%	7,012	17%	64%	1,194	22%	9,365	26%	816	7%	902	-29%
State of Kansas			13,088	35%	6,925	34%	53%	1,182	21%	8,567	60%	1,101	22%	3,469	0%



FTE Enrollment		FTE Employment FY 2015				Unencumbered Carryover Cash		2015 State Assessment 10th Grade (% on track to be college-ready)				ACT District-Wide Composite Score All Students
FY 2015	% Chg. '05-'15	Teachers	% Chg. '05-'15	Non- Teachers	% Chg. '05-'15	Current Oper. (millions)	% Chg. '05-'15	Math Low Income	Not Low Inc.	English/Language Low Income	Arts Not Low Inc.	
407	7%	33	9%	36	-3%	0.6	85%	9.1	18.2	9.1	36.4	21.0
518	-5%	46	6%	38	3%	0.7	4%	33.3	44.4	50.0	48.1	21.1
358	-10%	32	-3%	32	-13%	0.5	142%	20.0	26.7	20.0	40.0	19.9
420	-5%	30	-8%	30	-16%	0.3	-20%	0.0	32.1	0.0	39.3	21.6
2,282	-5%	144	-8%	348	16%	2.4	10%	17.0	22.0	10.6	22.9	20.4
406	-2%	33	-3%	27	-20%	0.7	174%	0.0	46.2	0.0	42.3	23.0
916	-4%	58	-9%	57	3%	2.5	62%	25.0	24.2	28.6	36.4	21.0
155	-6%	16	-11%	14	-9%	0.3	261%	0.0	0.0	0.0	0.0	24.7
396	-16%	34	-3%	35	-18%	1.8	324%	0.0	29.2	0.0	16.7	22.5
1,662	17%	95	12%	83	19%	0.9	-19%	7.4	26.6	29.6	57.3	23.9
1,171	2%	75	-10%	83	-6%	1.0	650%	16.4	21.9	23.9	37.5	21.7
1,931	-4%	128	-5%	407	11%	9.1	331%	9.5	22.8	19.0	35.6	22.5
768	2%	57	6%	147	62%	2.6	136%	29.2	30.0	25.0	40.0	21.0
297	-12%	26	-21%	32	3%	0.2	-29%	0.0	0.0	0.0	0.0	23.6
743	-10%	56	4%	48	9%	0.4	9%	0.0	10.3	9.1	23.1	20.9
898	50%	62	39%	60	51%	1.2	299%	12.5	4.2	16.7	29.2	21.3
463,266	5%	30,150	5%	34,353	10%	853.1	82%	11%	32%	17%	40%	21.9

Co.	USD	District Name	FY 2015 Spending Per Pupil							FY 2015 Aid Per Pupil					
			Total	% Chg. '05-'15	Instr.	% Chg. '05-'15	Instr. % of Total	Admin.	% Chg. '05-'15	State	% Chg. '05-'15	Federal	% Chg. '05-'15	Local	% Chg. '05-'15
MG	445	Coffeyville	13,409	40%	7,655	44%	57%	1,040	12%	8,336	42%	2,278	171%	2,812	-2%
MG	446	Independence	13,020	66%	6,423	32%	49%	1,192	32%	8,554	68%	850	18%	3,615	79%
MR	417	Morris County	12,603	35%	7,210	21%	57%	1,441	41%	8,513	31%	575	-36%	3,516	82%
MT	218	Elkhart	8,690	-16%	6,204	-3%	71%	737	-26%	6,816	63%	472	-62%	1,402	-71%
MT	217	Rolla	17,008	-3%	8,635	9%	51%	2,378	21%	9,878	118%	687	-9%	6,443	-48%
NM	115	Nemaha Central	15,975	New	10,285	New	64%	1,673	New	9,899	New	1,022	New	5,054	New
NM	113	Prairie Hills	12,219	New	6,895	New	56%	1,538	New	9,291	New	429	New	2,499	New
NO	413	Chanute	12,495	48%	7,021	38%	56%	863	24%	9,282	59%	865	7%	2,347	32%
NO	101	Erie-Galesburg	16,483	76%	8,373	43%	51%	1,389	77%	10,816	62%	966	48%	4,701	132%
NS	303	Ness City	13,648	38%	6,953	39%	51%	1,820	29%	8,102	28%	686	113%	4,860	50%
NS	106	Western Plains	19,655	52%	10,348	46%	53%	3,476	99%	12,197	41%	757	29%	6,701	79%
NT	212	Northern Valley	15,950	41%	9,272	45%	58%	2,301	35%	11,559	44%	829	17%	3,563	39%
NT	211	Norton	11,787	24%	7,102	26%	60%	1,434	26%	9,201	29%	468	-2%	2,134	12%
OS	454	Burlingame	12,966	24%	7,570	43%	58%	1,409	25%	10,941	36%	547	40%	1,479	-28%
OS	421	Lyndon	13,569	32%	8,149	46%	60%	1,435	33%	10,261	47%	336	24%	3,150	4%
OS	456	Marais Des Cygnes	14,001	38%	8,688	50%	62%	2,046	67%	11,559	54%	806	9%	1,743	-8%
State of Kansas			13,088	35%	6,925	34%	53%	1,182	21%	8,567	60%	1,101	22%	3,469	0%

FTE Enrollment		FTE Employment FY 2015				Unencumbered Carryover Cash		2015 State Assessment 10th Grade (% on track to be college-ready)				ACT District-Wide Composite Score All Students
FY 2015	% Chg. '05-'15	Teachers	% Chg. '05-'15	Non- Teachers	% Chg. '05-'15	Current Oper. (millions)	% Chg. '05-'15	Math	English/Language Arts	Low Income	Not Low Inc.	
								Low Income	Not Low Inc.	Low Income	Not Low Inc.	
1,660	-11%	121	13%	101	9%	1.3	280%	9.5	14.6	5.4	24.4	18.9
1,939	1%	123	-2%	130	23%	1.7	57%	16.9	39.3	21.7	44.6	21.0
711	-17%	55	-16%	50	-4%	1.4	43%	10.7	40.0	21.4	26.7	20.3
988	46%	38	-22%	50	-28%	1.4	193%	13.0	25.0	32.6	35.4	20.2
185	-10%	17	-24%	19	-32%	0.4	-5%	0.0	0.0	0.0	0.0	22.1
546	New	43	New	54	New	3.3	New	15.4	35.8	38.5	39.6	22.1
1,086	New	84	New	70	New	3.4	New	18.8	40.3	21.9	45.8	22.4
1,783	-1%	115	-6%	95	4%	5.9	300%	21.2	12.1	27.3	28.8	21.5
536	-50%	42	-52%	42	-49%	0.8	-30%	4.0	18.8	12.0	25.0	21.4
294	13%	26	28%	23	11%	0.7	41%	0.0	18.5	0.0	40.7	20.9
118	-38%	16	-13%	18	-18%	0.9	102%	0.0	0.0	0.0	0.0	22.5
170	-13%	22	12%	24	-4%	0.3	47%	0.0	0.0	0.0	0.0	19.0
689	6%	52	-2%	44	14%	1.5	178%	28.6	33.3	42.9	51.9	22.6
301	-11%	25	-11%	20	-2%	0.7	47%	0.0	9.1	6.7	18.2	20.6
400	-8%	33	-2%	31	2%	0.5	93%	20.0	34.8	20.0	34.8	21.9
255	-3%	26	10%	14	32%	0.7	86%	0.0	0.0	0.0	0.0	20.8
463,266	5%	30,150	5%	34,353	10%	853.1	82%	11%	32%	17%	40%	21.9

Co.	USD	District Name	FY 2015 Spending Per Pupil							FY 2015 Aid Per Pupil					
			Total	% Chg. '05-'15	Instr.	% Chg. '05-'15	Instr. % of Total	Admin.	% Chg. '05-'15	State	% Chg. '05-'15	Federal	% Chg. '05-'15	Local	% Chg. '05-'15
OS	420	Osage City	12,188	46%	7,526	66%	62%	950	12%	9,953	53%	506	45%	1,729	18%
OS	434	Santa Fe Trail	12,188	30%	6,933	29%	57%	1,280	17%	9,654	46%	567	-12%	1,967	-7%
OB	392	Osborne County	13,939	44%	7,888	40%	57%	1,688	58%	10,350	39%	637	18%	3,162	88%
OT	239	North Ottawa Co.	12,865	37%	7,353	33%	57%	1,237	31%	9,765	47%	522	23%	2,579	11%
OT	240	Twin Valley	13,030	33%	7,031	23%	54%	1,365	25%	9,746	42%	469	10%	2,815	15%
PN	495	Ft Larned	15,885	32%	9,825	60%	62%	1,739	44%	11,267	72%	1,212	1%	3,406	-20%
PN	496	Pawnee Heights	13,428	10%	8,595	16%	64%	1,576	-1%	9,266	6%	416	-25%	3,746	31%
PL	326	Logan	17,167	27%	11,254	32%	66%	1,930	37%	11,807	45%	822	55%	4,538	-6%
PL	325	Phillipsburg	12,075	19%	7,468	26%	62%	1,334	10%	9,502	33%	495	26%	2,077	-20%
PL	110	Thunder Ridge	15,765	New	9,433	New	60%	2,127	New	10,888	New	2,149	New	2,879	New
PT	321	Kaw Valley	14,579	38%	7,866	33%	54%	960	21%	7,676	91%	809	-14%	6,094	8%
PT	322	Onaga-Hav.-Wheat.	14,835	45%	8,493	58%	57%	1,713	27%	9,831	38%	688	42%	4,316	65%
PT	323	Rock Creek	11,564	29%	6,469	28%	56%	1,016	12%	9,193	31%	353	-4%	2,018	24%
PT	320	Wamego	16,159	53%	8,554	48%	53%	1,233	14%	8,374	36%	895	-9%	6,890	100%
PR	382	Pratt	11,332	28%	7,104	37%	63%	963	-11%	8,037	37%	488	-33%	2,807	24%
PR	438	Skyline Schools	12,698	31%	8,428	34%	66%	1,224	25%	9,293	31%	423	-26%	2,982	46%
State of Kansas			13,088	35%	6,925	34%	53%	1,182	21%	8,567	60%	1,101	22%	3,469	0%

FTE Enrollment		FTE Employment FY 2015				Unencumbered Carryover Cash		2015 State Assessment 10th Grade (% on track to be college-ready)				ACT District-Wide Composite Score All Students
FY 2015	% Chg. '05-'15	Teachers	% Chg. '05-'15	Non- Teachers	% Chg. '05-'15	Current Oper. (millions)	% Chg. '05-'15	Math	English/Language Arts	Low Income	Not Low Inc.	
								Low Income	Not Low Inc.	Low Income	Not Low Inc.	
631	-13%	52	7%	26	-22%	0.8	69%	0.0	26.9	13.3	26.9	21.3
995	-21%	66	-24%	66	-1%	1.1	155%	8.8	19.4	23.5	22.2	21.0
280	-28%	24	-25%	16	-33%	1.0	78%	25.0	73.3	31.3	53.3	20.4
606	12%	49	10%	49	-2%	1.2	190%	4.8	32.4	19.0	43.2	22.1
604	-4%	46	-3%	36	20%	0.6	-4%	9.1	24.1	0.0	27.6	21.3
880	-5%	66	12%	182	32%	3.9	164%	13.0	30.2	21.7	25.6	20.2
164	-8%	16	-3%	9	-65%	1.1	1029%	0.0	0.0	0.0	0.0	27.5
153	-17%	20	-11%	15	13%	0.6	215%	N/A	53.8	N/A	53.8	20.1
591	-3%	46	-5%	31	-3%	1.1	34%	30.0	33.3	40.0	38.1	21.6
218	New	22	New	21	New	1.3	New	0.0	0.0	8.3	0.0	20.1
1,121	5%	85	13%	151	38%	0.9	-54%	7.1	25.0	28.6	30.9	21.0
305	-17%	25	-13%	26	13%	0.5	184%	0.0	42.1	0.0	36.8	22.5
902	24%	63	25%	48	-9%	1.0	44%	17.6	44.0	23.5	50.0	22.2
1,495	17%	107	13%	180	55%	1.6	86%	17.2	25.6	27.6	41.5	22.8
1,171	4%	70	-4%	60	-11%	1.5	55%	12.1	27.3	15.2	22.7	21.7
406	-3%	33	5%	26	11%	0.2	-46%	0.0	37.5	0.0	33.3	20.9
463,266	5%	30,150	5%	34,353	10%	853.1	82%	11%	32%	17%	40%	21.9

Co.	USD	District Name	FY 2015 Spending Per Pupil							FY 2015 Aid Per Pupil					
			Total	% Chg. '05-'15	Instr.	% Chg. '05-'15	Instr. % of Total	Admin.	% Chg. '05-'15	State	% Chg. '05-'15	Federal	% Chg. '05-'15	Local	% Chg. '05-'15
RA	105	Rawlins County	13,622	10%	8,219	17%	60%	1,232	0%	9,687	12%	675	21%	3,259	2%
RN	313	Buhler	12,316	44%	6,747	45%	55%	985	18%	7,984	64%	397	35%	3,979	17%
RN	310	Fairfield	19,392	78%	10,026	71%	52%	2,019	23%	10,647	61%	1,020	49%	7,724	115%
RN	312	Haven	12,435	33%	7,539	33%	61%	1,199	34%	8,802	41%	512	24%	3,232	21%
RN	308	Hutchinson	12,449	43%	6,799	52%	55%	1,091	11%	8,837	75%	1,688	7%	1,925	-19%
RN	309	Nickerson	12,002	35%	6,765	39%	56%	1,176	-2%	9,160	57%	651	26%	2,196	-14%
RN	311	Pretty Prairie	13,956	31%	7,972	37%	57%	1,313	25%	10,375	39%	604	26%	2,977	9%
RP	426	Pike Valley	15,215	43%	9,476	43%	62%	1,827	57%	11,025	44%	659	9%	3,621	52%
RP	109	Republic County	13,483	New	7,284	New	54%	1,211	New	8,881	New	685	New	3,980	New
RC	401	Chase-Raymond	16,279	8%	9,672	15%	59%	1,930	-12%	10,944	30%	918	25%	4,417	-25%
RC	444	Little River	13,485	19%	7,256	20%	54%	1,696	21%	8,894	40%	410	5%	4,181	-8%
RC	405	Lyons	18,775	58%	11,591	56%	62%	1,578	34%	10,631	51%	1,540	13%	6,604	92%
RC	376	Sterling	14,414	47%	8,081	37%	56%	1,091	-33%	10,466	49%	473	-24%	3,475	60%
RL	384	Blue Valley - Riley	16,799	50%	8,846	43%	53%	2,804	87%	10,611	39%	945	-11%	5,243	109%
RL	383	Manhattan-Ogden	12,794	32%	6,913	28%	54%	1,004	10%	6,911	63%	1,163	-15%	4,729	15%
RL	378	Riley County	13,262	32%	7,255	44%	55%	1,241	8%	9,400	30%	350	-24%	3,511	46%
State of Kansas			13,088	35%	6,925	34%	53%	1,182	21%	8,567	60%	1,101	22%	3,469	0%

FTE Enrollment		FTE Employment FY 2015				Unencumbered Carryover Cash		2015 State Assessment 10th Grade (% on track to be college-ready)				ACT District-Wide Composite Score All Students
FY 2015	% Chg. '05-'15	Teachers	% Chg. '05-'15	Non- Teachers	% Chg. '05-'15	Current Oper. (millions)	% Chg. '05-'15	Math Low Income	Not Low Inc.	English/Language Arts Low Income	Not Low Inc.	
324	-7%	28	-14%	35	10%	0.3	-24%	21.4	35.7	21.4	42.9	21.6
2,128	-1%	134	-17%	136	-6%	1.6	27%	13.6	27.6	22.7	30.5	22.3
275	-27%	26	-24%	28	-16%	0.6	92%	0.0	0.0	0.0	0.0	20.3
908	-15%	71	-11%	88	31%	0.5	9%	13.6	6.1	18.2	30.6	22.2
4,837	5%	296	5%	430	21%	21.7	156%	9.7	21.8	16.8	26.7	22.1
1,111	1%	85	7%	81	25%	2.2	34%	7.9	25.0	13.2	37.5	21.3
272	-9%	21	-16%	23	10%	0.6	42%	0.0	18.2	0.0	22.7	20.8
206	-21%	23	-9%	19	-43%	0.9	343%	0.0	0.0	0.0	0.0	20.3
470	New	33	New	28	New	1.2	New	23.5	36.0	35.3	48.0	20.9
165	11%	19	-13%	15	-13%	0.4	276%	10.0	0.0	20.0	0.0	18.4
322	14%	27	8%	27	3%	0.4	81%	0.0	26.7	0.0	40.0	21.1
794	-5%	61	-10%	116	19%	3.3	163%	34.6	45.8	38.5	54.2	21.4
520	3%	39	-6%	43	19%	0.5	28%	0.0	29.2	0.0	37.5	24.5
180	-26%	32	56%	14	-42%	0.1	-79%	0.0	66.7	0.0	33.3	21.8
6,078	23%	397	35%	516	39%	9.6	56%	20.8	43.7	16.8	46.2	23.8
657	2%	49	15%	56	61%	1.6	200%	22.2	23.5	16.7	41.2	22.0
463,266	5%	30,150	5%	34,353	10%	853.1	82%	11%	32%	17%	40%	21.9

Co.	USD	District Name	FY 2015 Spending Per Pupil							FY 2015 Aid Per Pupil					
			Total	% Chg. '05-'15	Instr.	% Chg. '05-'15	Instr. % of Total	Admin.	% Chg. '05-'15	State	% Chg. '05-'15	Federal	% Chg. '05-'15	Local	% Chg. '05-'15
RO	269	Palco	22,820	54%	11,765	39%	52%	3,039	59%	12,566	65%	753	72%	9,501	40%
RO	270	Plainville	13,332	28%	7,671	35%	58%	1,502	-14%	8,175	30%	529	15%	4,628	26%
RO	271	Stockton	14,766	52%	7,948	33%	54%	1,950	71%	9,114	29%	614	12%	5,048	138%
RH	395	LaCrosse	12,966	30%	7,932	28%	61%	1,524	38%	9,245	28%	576	0%	3,201	47%
RH	403	Otis-Bison	14,049	11%	8,097	28%	58%	2,327	29%	9,751	23%	534	-8%	3,764	-10%
RS	399	Paradise	18,791	34%	11,046	40%	59%	2,485	16%	11,799	63%	515	-15%	6,478	6%
RS	407	Russell County	14,005	47%	7,239	42%	52%	1,700	81%	7,985	41%	1,007	27%	5,014	64%
SA	307	Ell-Saline	13,261	31%	7,051	33%	53%	1,312	13%	10,190	37%	539	37%	2,532	10%
SA	305	Salina	16,314	37%	9,151	51%	56%	1,108	9%	8,544	70%	2,149	14%	5,620	11%
SA	306	Southeast Of Saline	11,929	37%	7,389	41%	62%	1,298	62%	8,275	56%	310	48%	3,344	5%
SC	466	Scott County	12,349	16%	6,170	11%	50%	1,264	40%	7,465	39%	576	36%	4,308	-12%
SG	268	Cheney	11,672	18%	6,755	32%	58%	1,261	5%	9,367	30%	402	110%	1,903	-23%
SG	264	Clearwater	12,360	43%	6,454	42%	52%	1,233	27%	8,614	54%	333	47%	3,413	21%
SG	260	Derby	10,824	34%	6,351	40%	59%	745	-2%	7,441	51%	803	8%	2,620	11%
SG	265	Goddard	11,786	45%	5,637	45%	48%	950	10%	8,412	58%	288	61%	3,095	16%
SG	261	Haysville	11,554	39%	5,895	39%	51%	1,271	35%	9,116	55%	784	10%	1,654	-4%
State of Kansas			13,088	35%	6,925	34%	53%	1,182	21%	8,567	60%	1,101	22%	3,469	0%



FTE Enrollment		FTE Employment FY 2015				Unencumbered Carryover Cash		2015 State Assessment 10th Grade (% on track to be college-ready)				ACT District-Wide Composite Score All Students
FY 2015	% Chg. '05-'15	Teachers	% Chg. '05-'15	Non- Teachers	% Chg. '05-'15	Current Oper. (millions)	% Chg. '05-'15	Math		English/Language Arts		
								Low Income	Not Low Inc.	Low Income	Not Low Inc.	
108	-24%	20	-1%	16	0%	0.2	-22%	0.0	0.0	0.0	0.0	22.3
370	0%	29	-8%	31	13%	1.2	190%	0.0	12.5	15.4	31.3	21.9
293	-17%	22	-30%	23	-47%	0.4	246%	0.0	0.0	0.0	10.0	20.1
291	-5%	25	-6%	15	-9%	0.9	25%	0.0	35.7	0.0	64.3	20.5
231	6%	21	-1%	18	-22%	0.4	30%	0.0	23.5	0.0	23.5	20.7
118	-20%	16	-4%	25	40%	0.2	-32%	0.0	20.0	0.0	50.0	19.0
763	-23%	66	-12%	69	-16%	2.6	203%	12.5	48.6	12.5	54.3	22.2
476	6%	33	2%	31	21%	1.6	275%	0.0	5.6	0.0	44.4	21.1
7,003	-2%	467	7%	928	30%	21.6	144%	7.3	20.3	15.1	41.0	21.1
698	2%	57	20%	40	19%	1.2	169%	23.1	30.6	15.4	34.7	22.1
910	3%	64	-8%	53	-37%	1.3	176%	13.2	20.0	18.4	33.3	20.7
760	2%	53	4%	48	-2%	1.1	143%	14.3	38.5	21.4	46.2	22.9
1,133	-9%	79	10%	87	-16%	1.9	114%	10.5	21.3	21.1	27.9	21.9
6,448	1%	372	6%	410	2%	5.1	-12%	7.5	22.9	18.4	35.1	21.7
5,222	28%	284	38%	315	54%	3.0	-1%	12.0	29.4	21.4	41.5	22.3
5,197	19%	288	18%	416	16%	12.7	220%	6.2	12.4	19.6	27.9	20.4
463,266	5%	30,150	5%	34,353	10%	853.1	82%	11%	32%	17%	40%	21.9

Co.	USD	District Name	FY 2015 Spending Per Pupil							FY 2015 Aid Per Pupil					
			Total	% Chg. '05-'15	Instr.	% Chg. '05-'15	Instr. % of Total	Admin.	% Chg. '05-'15	State	% Chg. '05-'15	Federal	% Chg. '05-'15	Local	% Chg. '05-'15
SG	266	Maize	10,327	34%	5,812	25%	56%	826	29%	7,633	42%	234	111%	2,459	12%
SG	263	Mulvane	11,467	50%	5,807	42%	51%	1,317	17%	7,390	31%	671	5%	3,511	163%
SG	267	Renwick	10,663	27%	5,572	31%	52%	893	11%	7,610	41%	125	-28%	2,927	4%
SG	262	Valley Center	11,340	44%	5,583	39%	49%	1,123	41%	8,402	57%	393	106%	2,545	10%
SG	259	Wichita	13,687	47%	6,585	41%	48%	1,321	21%	9,150	73%	1,635	23%	3,008	5%
SW	483	Kismet-Plains	15,039	44%	8,182	39%	54%	1,211	35%	9,985	63%	869	-1%	4,185	21%
SW	480	Liberal	11,841	37%	6,281	24%	53%	1,153	37%	9,528	83%	1,220	8%	1,093	-53%
SN	437	Auburn Washburn	10,886	24%	5,745	31%	53%	1,004	16%	7,074	79%	651	45%	3,177	-27%
SN	345	Seaman	11,129	36%	5,661	26%	51%	938	32%	7,796	73%	691	32%	2,642	-17%
SN	450	Shawnee Heights	10,857	33%	5,740	32%	53%	790	8%	7,788	57%	635	33%	2,434	-11%
SN	372	Silver Lake	11,888	27%	6,296	26%	53%	1,187	14%	9,278	31%	458	34%	2,152	11%
SN	501	Topeka	13,430	31%	7,257	26%	54%	1,562	50%	9,245	76%	2,034	12%	2,151	-33%
SD	412	Hoxie	11,851	12%	7,048	28%	59%	1,736	-5%	8,128	21%	428	-20%	3,295	-17%
SH	352	Goodland	11,631	32%	6,726	27%	58%	1,010	14%	8,306	44%	559	7%	2,913	16%
SM	237	Smith Center	14,018	29%	8,109	21%	58%	1,257	1%	9,698	40%	560	16%	3,811	12%
SF	351	Macksville	15,931	55%	10,117	74%	64%	2,128	30%	10,450	75%	915	31%	4,566	27%
State of Kansas			13,088	35%	6,925	34%	53%	1,182	21%	8,567	60%	1,101	22%	3,469	0%

FTE Enrollment		FTE Employment FY 2015				Unencumbered Carryover Cash		2015 State Assessment 10th Grade (% on track to be college-ready)				ACT District-Wide Composite Score All Students
FY 2015	% Chg. '05-'15	Teachers	% Chg. '05-'15	Non- Teachers	% Chg. '05-'15	Current Oper. (millions)	% Chg. '05-'15	Math Low Income	Math Not Low Inc.	English/Language Arts Low Income	English/Language Arts Not Low Inc.	
6,843	19%	363	19%	295	25%	7.5	85%	24.5	36.7	30.6	46.5	22.5
1,748	-7%	110	-1%	196	4%	2.9	23%	6.7	16.8	22.2	18.9	21.2
1,874	-3%	119	0%	113	20%	1.9	133%	10.0	30.5	25.0	41.9	22.5
2,708	14%	140	10%	139	43%	3.7	109%	10.7	32.9	20.2	30.1	22.1
47,254	4%	3036	17%	2963	16%	91.6	21%	8.8	27.2	11.8	33.7	19.6
700	5%	52	4%	48	3%	3.1	261%	5.3	15.4	15.8	38.5	20.6
4,722	13%	296	15%	397	6%	4.8	69%	7.0	25.0	8.9	31.0	17.8
5,918	18%	346	10%	419	28%	8.7	103%	17.9	47.1	19.3	45.1	22.7
3,763	13%	233	5%	253	24%	3.8	108%	10.5	40.8	15.1	38.8	22.5
3,500	4%	199	1%	215	18%	5.1	123%	11.2	20.4	14.6	34.4	22.3
689	-6%	53	-5%	83	44%	1.5	320%	0.0	36.6	0.0	48.8	23.0
13,295	3%	847	6%	1134	18%	24.8	55%	8.7	17.0	15.5	21.0	20.3
339	7%	28	19%	33	-12%	1.0	12%	0.0	46.2	0.0	46.2	21.2
1,047	10%	49	-22%	90	-20%	1.0	32%	10.7	44.7	10.7	39.5	19.8
391	-14%	29	-26%	26	-11%	0.8	229%	0.0	38.9	0.0	33.3	21.3
241	-16%	26	-5%	24	-4%	0.9	120%	23.5	0.0	41.2	0.0	22.7
463,266	5%	30,150	5%	34,353	10%	853.1	82%	11%	32%	17%	40%	21.9

Co.	USD	District Name	FY 2015 Spending Per Pupil							FY 2015 Aid Per Pupil					
			Total	% Chg. '05-'15	Instr.	% Chg. '05-'15	Instr. % of Total	Admin.	% Chg. '05-'15	State	% Chg. '05-'15	Federal	% Chg. '05-'15	Local	% Chg. '05-'15
SF	350	St John-Hudson	14,372	41%	8,866	57%	62%	1,552	29%	8,489	22%	787	93%	5,096	79%
SF	349	Stafford	16,271	30%	8,139	30%	50%	2,795	53%	10,068	37%	1,134	47%	5,069	15%
ST	452	Stanton County	13,586	21%	7,884	31%	58%	1,855	32%	8,822	154%	873	29%	3,890	-46%
SV	210	Hugoton	13,724	44%	7,372	40%	54%	1,034	34%	7,630	141%	781	-14%	5,313	-2%
SV	209	Moscow	17,869	37%	10,221	37%	57%	2,139	-3%	9,993	149%	1,657	82%	6,220	-24%
SU	359	Argonia	14,659	28%	9,157	41%	62%	2,053	8%	10,813	30%	576	-10%	3,461	36%
SU	357	Belle Plaine	11,777	14%	7,775	17%	66%	1,460	68%	10,066	21%	509	34%	1,202	-28%
SU	360	Caldwell	16,235	39%	9,242	46%	57%	1,688	14%	11,129	43%	597	2%	4,509	37%
SU	356	Conway Springs	13,602	32%	6,742	38%	50%	1,422	35%	10,851	39%	491	55%	2,261	5%
SU	358	Oxford	15,115	45%	7,644	30%	51%	1,827	50%	10,651	35%	429	9%	4,035	86%
SU	509	South Haven	17,546	56%	10,183	67%	58%	1,675	34%	12,971	54%	555	-1%	4,132	83%
SU	353	Wellington	11,863	22%	6,544	20%	55%	1,047	52%	9,398	46%	904	-6%	1,561	-33%
TH	314	Brewster	14,014	2%	8,332	7%	59%	2,145	31%	10,705	21%	243	-61%	3,066	-28%
TH	315	Colby	11,951	37%	6,734	48%	56%	1,164	26%	8,051	38%	563	31%	5,332	117%
TH	316	Golden Plains	15,436	41%	9,056	40%	59%	2,115	43%	12,210	44%	978	104%	2,248	12%
TR	208	Wakeeney	13,069	1%	7,357	13%	56%	1,520	42%	8,125	34%	465	-7%	4,479	-30%
State of Kansas			13,088	35%	6,925	34%	53%	1,182	21%	8,567	60%	1,101	22%	3,469	0%

FTE Enrollment		FTE Employment FY 2015				Unencumbered Carryover Cash		2015 State Assessment 10th Grade (% on track to be college-ready)				ACT District-Wide Composite Score All Students
FY 2015	% Chg. '05-'15	Teachers	% Chg. '05-'15	Non- Teachers	% Chg. '05-'15	Current Oper. (millions)	% Chg. '05-'15	Math	English/Language Arts	Low Income	Not Low Inc.	
								Low Income	Not Low Inc.			Low Income
345	-14%	26	-16%	23	-31%	0.4	21%	22.2	26.7	27.8	33.3	18.6
263	-16%	21	-20%	38	35%	3.0	473%	0.0	0.0	0.0	0.0	19.7
425	-9%	33	-13%	65	94%	1.0	279%	25.0	30.0	20.0	10.0	21.3
1,058	3%	78	-5%	133	82%	1.9	71%	14.0	10.7	9.3	25.0	20.2
191	-19%	19	-11%	23	-23%	0.5	166%	0.0	0.0	0.0	0.0	20.5
166	-22%	19	3%	14	-16%	0.3	16%	0.0	0.0	0.0	0.0	18.7
600	-22%	47	-23%	40	-35%	0.5	624%	15.8	28.0	21.1	28.0	22.7
247	-18%	20	-19%	21	0%	0.6	86%	0.0	0.0	0.0	0.0	19.7
481	-15%	32	-23%	35	3%	1.1	222%	23.5	28.9	47.1	36.8	21.9
353	-13%	23	-25%	33	28%	0.8	14%	0.0	26.7	0.0	33.3	22.2
180	-20%	20	-8%	19	18%	0.3	-18%	20.0	0.0	13.3	0.0	23.1
1,558	-6%	106	3%	147	-17%	2.2	124%	6.6	14.3	9.8	22.2	20.3
111	-14%	12	-23%	14	-31%	0.5	91%	N/A	30.0	N/A	40.0	22.0
903	-12%	54	-17%	78	-17%	1.7	451%	0.0	22.6	3.8	35.8	21.2
182	-5%	18	5%	19	21%	1.1	569%	0.0	0.0	0.0	0.0	19.4
370	-3%	31	-6%	25	-32%	0.7	131%	0.0	29.4	0.0	17.6	22.1
463,266	5%	30,150	5%	34,353	10%	853.1	82%	11%	32%	17%	40%	21.9

Co.	USD	District Name	FY 2015 Spending Per Pupil							FY 2015 Aid Per Pupil					
			Total	% Chg. '05-'15	Instr.	% Chg. '05-'15	Instr. % of Total	Admin.	% Chg. '05-'15	State	% Chg. '05-'15	Federal	% Chg. '05-'15	Local	% Chg. '05-'15
WB	329	Mill Creek Valley	15,342	39%	7,678	37%	50%	1,884	38%	9,635	43%	486	27%	5,221	32%
WB	330	Mission Valley	16,932	55%	8,171	42%	48%	1,710	50%	10,774	55%	912	0%	5,268	49%
WA	241	Wallace County	17,115	43%	8,682	47%	51%	2,309	37%	9,673	35%	401	-37%	7,041	67%
WA	242	Weskan	16,674	39%	10,562	49%	63%	2,285	60%	10,880	32%	624	0%	5,170	66%
WS	223	Barnes	15,715	45%	9,056	41%	58%	1,387	21%	10,053	49%	598	15%	5,063	41%
WS	224	Clifton-Clyde	12,379	19%	7,638	21%	62%	1,354	34%	8,933	28%	683	27%	2,763	-5%
WS	108	Washington Co.	13,970	New	8,113	New	58%	1,431	New	9,307	New	558	New	4,112	New
WH	467	Leoti	15,088	51%	7,588	43%	50%	1,651	53%	9,129	56%	777	23%	5,182	43%
WL	387	Altoona-Midway	13,820	14%	7,845	14%	57%	1,883	16%	10,422	26%	990	2%	2,620	-9%
WL	484	Fredonia	12,553	34%	7,045	38%	56%	1,493	38%	9,220	41%	783	28%	2,561	16%
WL	461	Neodesha	12,966	30%	7,345	26%	57%	1,366	10%	10,115	33%	789	38%	2,085	12%
WO	366	Woodson	14,397	42%	8,612	56%	60%	1,447	67%	10,248	41%	1,214	79%	3,068	41%
WY	204	Bonner Springs	12,649	45%	6,483	36%	51%	1,176	52%	8,214	75%	777	35%	3,658	7%
WY	500	Kansas City	15,717	58%	7,431	45%	47%	1,289	13%	9,989	78%	2,347	35%	3,600	38%
WY	203	Piper-KC	11,206	31%	5,962	29%	53%	941	9%	6,495	30%	207	75%	4,503	32%
WY	202	Turner-KC	11,889	35%	6,003	36%	50%	1,262	33%	9,715	79%	1,184	36%	989	-60%
State of Kansas			13,088	35%	6,925	34%	53%	1,182	21%	8,567	60%	1,101	22%	3,469	0%

FTE Enrollment		FTE Employment FY 2015				Unencumbered Carryover Cash		2015 State Assessment 10th Grade (% on track to be college-ready)				ACT District-Wide Composite Score All Students
FY 2015	% Chg. '05-'15	Teachers	% Chg. '05-'15	Non- Teachers	% Chg. '05-'15	Current Oper. (millions)	% Chg. '05-'15	Math		English/Language Arts		
								Low Income	Not Low Inc.	Low Income	Not Low Inc.	
454	-2%	37	4%	47	45%	0.7	41%	26.7	32.0	33.3	44.0	21.4
454	-8%	36	-1%	55	17%	2.3	167%	18.2	12.0	18.2	16.0	21.2
186	-17%	20	-22%	24	-10%	0.3	55%	0.0	40.0	0.0	40.0	22.9
96	-27%	16	4%	9	-60%	0.2	145%	0.0	0.0	0.0	0.0	21.5
341	-11%	35	-13%	26	-1%	0.6	5%	15.4	44.0	15.4	48.0	23.7
314	1%	29	5%	22	-14%	0.9	198%	0.0	45.8	0.0	50.0	20.9
344	New	30	New	20	New	0.2	New	18.8	17.6	25.0	41.2	23.1
405	-16%	38	-5%	44	9%	0.7	-2%	6.7	50.0	6.7	42.9	22.2
210	-9%	19	-25%	21	11%	0.8	82%	0.0	0.0	0.0	0.0	18.4
652	-12%	49	-1%	46	-6%	2.0	115%	8.7	9.4	26.1	18.8	21.5
678	-7%	53	-11%	44	-4%	0.4	39%	11.5	20.7	26.9	34.5	21.8
431	-14%	36	-5%	30	-23%	0.2	-2%	37.5	7.1	12.5	35.7	22.2
2,526	16%	155	15%	169	1%	4.9	263%	4.3	14.2	8.7	34.9	20.4
20,523	7%	1382	14%	1742	33%	60.3	137%	6.6	9.6	7.2	13.8	16.6
1,897	41%	108	35%	102	78%	2.9	326%	17.2	19.7	24.1	40.2	22.1
3,970	9%	208	11%	278	11%	10.8	251%	11.9	14.3	14.7	15.6	17.5
463,266	5%	30,150	5%	34,353	10%	853.1	82%	11%	32%	17%	40%	21.9

## SOURCING AND NOTES

*Dollar amounts and other data points on all schedules may vary due to rounding.*

**Tables 1 & 2:** The state-mandated 20 mills of property tax wasn't reflected as State Aid until 2015. At that time, approximately \$570 million or \$1,200 per-pupil that had been listed as Local Aid was correctly reflected as State Aid.

**Table 3:** Kansas Department of Education, U.S. Bureau of Labor Statistics (Inflation, Midwest Urban Cities, fiscal basis)

**Table 4:** Kansas Division of the Budget, FY 2017 Governor's Budget Comparison Report Schedule 2.2

**Table 5:** Kansas Department of Education

**Table 6:** Kansas Department of Education; carryover ratio is the amount of carryover cash reserves in current operating funds at the beginning of a school year as a percentage of current operating spending for the school year. Current operating funds exclude federal, capital outlay and debt service. School districts that consolidated and no longer exist are reflected in the statewide average but are otherwise excluded in this analysis.

**Table 7:** National Association of State Budget Officers, State Expenditure Report

**Tables 8 & 9:** Kansas Department of Education, College and Career Ready Standards

**Table 10:** National Assessment of Education Progress (NAEP), Kansas Dept. of Education, Bureau of Labor Statistics (Midwest Urban Cities, fiscal basis). Kansas began participating in NAEP in 1998, which is now given biannually. Pre-2005 spending adjusted upward for KPERS.

**Table 11:** National Assessment of Educational Progress (NAEP)

**Table 12:** ACT

**Table 13:** U.S. Department of Education, National Center for Education Statistics (NCES); ACT (breakouts by income level not published)

**Table 14:** Kansas Department of Education; National Assessment of Educational Progress (NAEP)

**Tables 15 & 16:** U.S. Department of Education (USDE), National Center for Education Statistics (NCES); scale score range is 0 to 500.

**Table 17:** U.S. Census Bureau and U.S. Department of Education (USDE), National Center for Education Statistics (NCES); current spending as reported by each state, which excludes capital and debt. Per-pupil based on fall headcounts (as opposed to FTE



enrollment used for in-state reporting by KSDE. The NAEP scale score range is 0 to 500. Asterisk (\*) indicates insufficient reporting data (not enough students).

**Tables 18 & 19:** Kansas Department of Education, certified and non-certified personnel reports.

**Table 20:** Kansas Department of Education. Total Spending as calculated by KSDE, which is the sum of State, Federal and Local Aid. Instruction and Administration spending comes from the KSDE Comparative Performance & Fiscal System and reflects current operating spending (no allocation of capital or debt). Spending categories as defined by KSDE accounting manual; total spending includes capital and debt service. FTE = full time equivalent. KSDE accounting procedures require districts that host Special Education Co-ops to record all related expenditures of the Co-Op as expenditures of the host district; those expenditures are reimbursed by participating districts, which appears as Local Aid on the books of the host district. (KPI recommends that this procedure be changed so that expenditures are allocated appropriately to each participating district.) Unencumbered Carryover Cash balances exclude all federal funds; current operating funds include all except Capital Outlay, Debt Service and Federal. "New" indicates a district that has been created since 2005. State Assessment achievement levels per KSDE College

and Career Ready Standards; N/A indicates the relevant data is not available from the underlying source. ACT scores reflect data collected from the ACT college readiness assessment.



[www.kansaspolicy.org](http://www.kansaspolicy.org)

**WICHITA OFFICE:**

250 N. Water, Suite 216 • Wichita, KS 67202  
316-634-0218

**OVERLAND PARK OFFICE:**

12980 Metcalf, Suite 430 • Overland Park, KS 66213  
913-213-5038

©Kansas Policy Institute, 2016